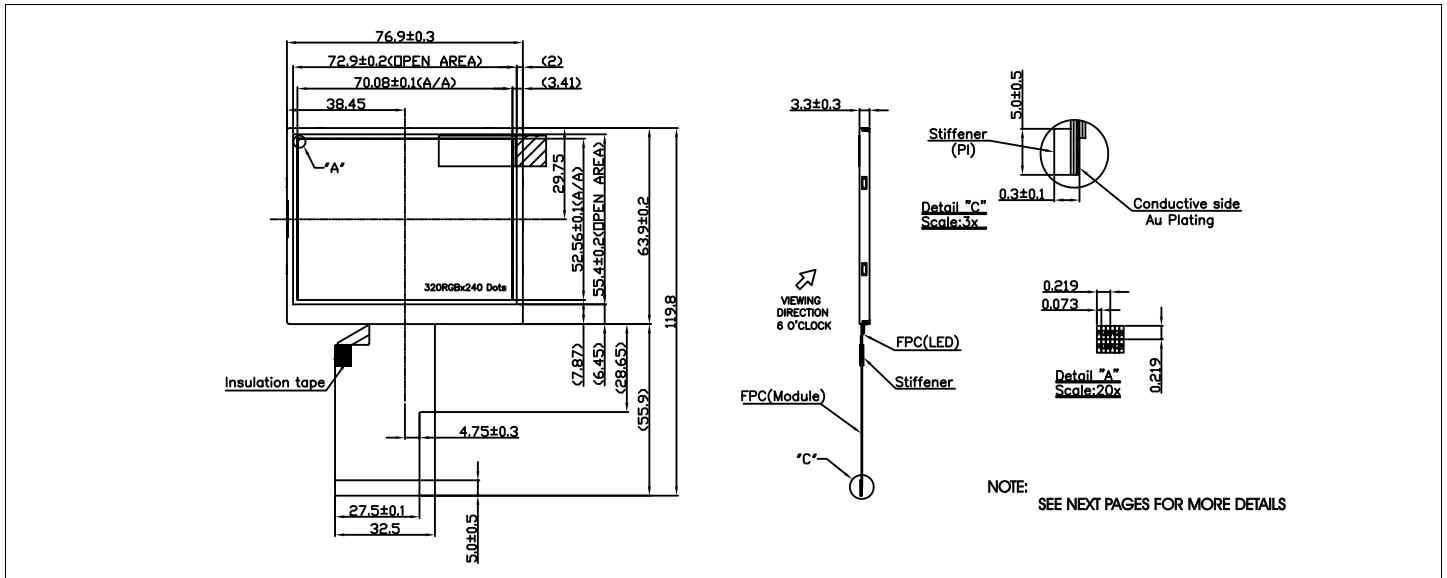


# HDA350-LV

Dimensional Drawing

3.5" , QVGA (TFT) Color Graphics , Landscape , White LED Backlight



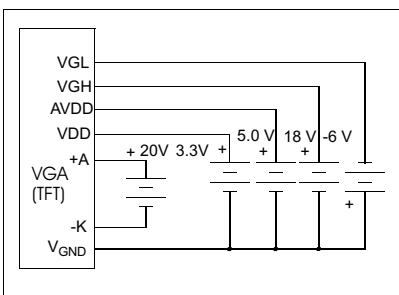
**Features**  
 Viewing Angle(horizontal)..... 120 degrees  
 High Contrast.....300:1  
 Fast Response Time.....35 msec  
 Built-in Controller.....none  
 Touch Screen.....optional

**Physical Data**  
 Module Size.....76.9W x63.9H x3.3T mm  
 Active Area Size.....70.08W x52.56 H mm  
 Dot Pitch.....0.073W x 0.219H mm  
 Weight.....34g

### Electrical Characteristics (VDD=3.3±0.125V 25°C)

PARAMETER	SYM	CONDITION	MIN	TYP	MAX	UNIT
OPERATING VOLTAGE	$V_{DD}/AV_{DD}$	-	3.0/4.5	3.3/5.0	3.6/5.5	V
OPERATING VOLTAGE	$V_{LED}$	$I = 20 \text{ mA}$	-	20.4	-	V
INPUT HIGH VOLTAGE	$V_{IH}$	-	$0.7 \cdot V_{DD}$	-	$V_{DD}$	V
INPUT LOW VOLTAGE	$V_{IL}$	-	0	-	$0.3 \cdot V_{DD}$	V
OPERATING CURRENT	$I_{DD}/AI_{DD}$	$V = 3.3/5V$	-	1.5/4	-	mA
OPERATING CURRENT LED	$I_{LED}$	-	-	20	25	mA
POWER CONSUMPTION	$P_D$	-	-	26	-	mW
BRIGHTNESS	L	Average	200	250	-	Cd/m <sup>2</sup>

### Power Supply



### Pin Connections

PIN NO.	SYMBOL		FUNCTION
1	LED-K	-	Backlight LED (-)
2	LED-K	-	Backlight LED (-)
3	LED-A	-	Backlight LED (+)
4	LED-A	-	Backlight LED (+)
5	NC	-	No Connection
6	NC	-	No Connection
7	POL	-	Signal to generate Vcom
8	RESET	L	Reset Input
9	NC	-	No Connection
10	NC	-	No Connection
11	NC	-	No Connection
12-19	B0-B7	H/L	Blue Data Inputs
20-27	G0-G7	H/L	Green Data Inputs
28-35	R0-R7	H/L	Red Data Inputs
36	HSYNC	H	Horizontal Sync Input
37	VSYNC	H	Vertical Sync Input
38	DCLK	H/L	Data Clock Input
39	AVDD	-	Analog Power (+5V)
40	AVDD	-	Analog Power (+5V)
41	VDD	-	Digital Power (+3.3V)
42	VDD	-	Digital Power (+3.3V)
43	NC	-	No Connection
44	VGL	-	Gate OFF Power
45	VGL	-	Gate OFF Power
46	NC	-	No Connection
47	VGH	-	Gate ON Power
48	NC	-	No Connection
49	NC	-	No Connection
50	VCOM	H	Vcom Driving Input
51	VCOM	H	Vcom Driving Input
52	ENABLE	L	Data Enable Input
53	GND	-	Ground Pin
54	GND	-	Ground Pin

### Absolute Maximum Ratings

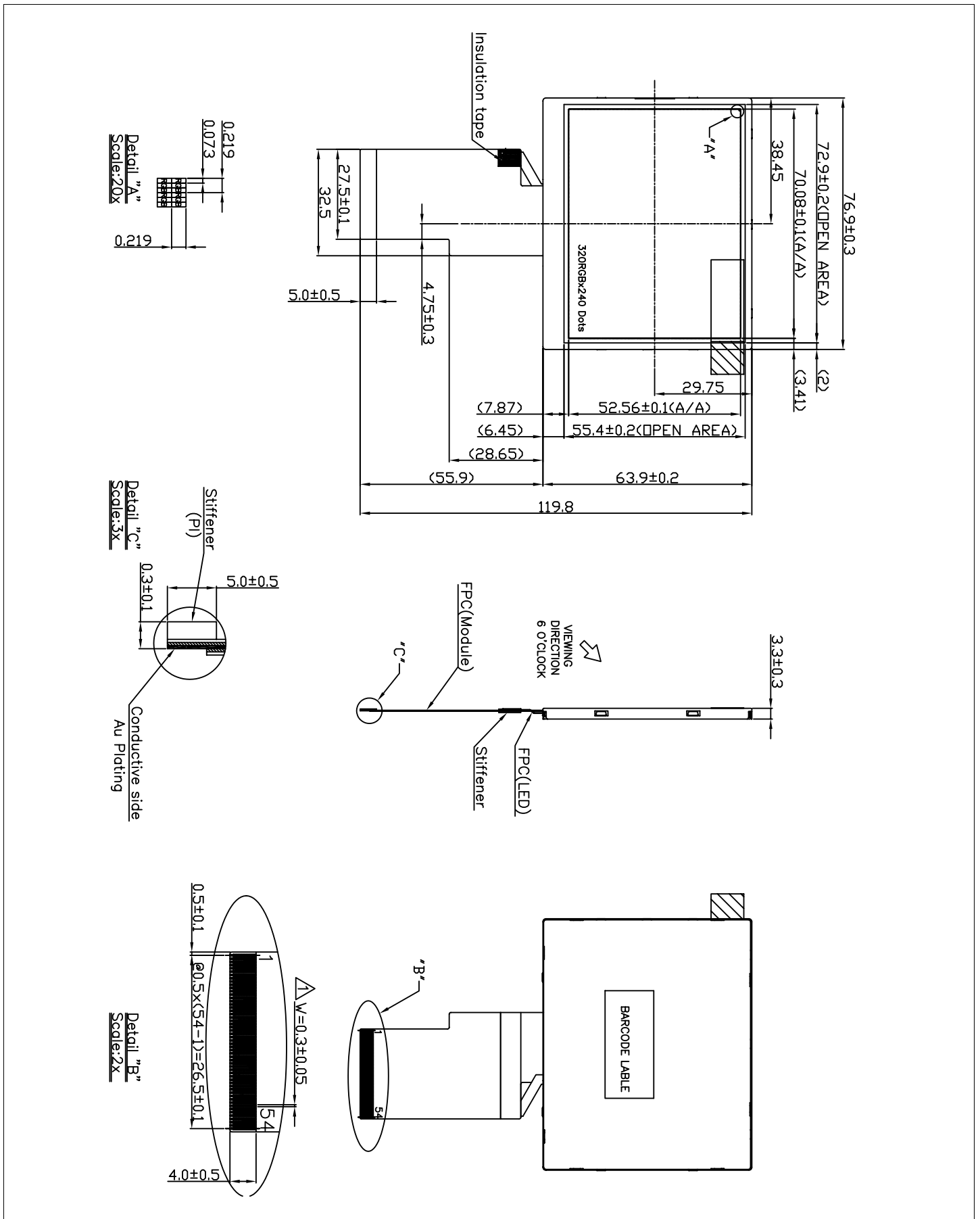
PARAMETER	SYMBOL	MIN	MAX	UNIT
SUPPLY VOLTAGE	$V_{DD}/AV_{DD}$	-0.3/-0.3	4.3/6.0	V
BACKLIGHT CURRENT(White LED)	$I_{LED}$	-	25	mA
INPUT VOLTAGE	$V_{IN}$	-0.3	$V_{DD} + 0.3$	V
OPERATING TEMPERATURE	$T_{OP}$	-20	+60	°C
STORAGE TEMPERATURE	$T_{STG}$	-30	+70	°C



# HDA350-LV

Dimensional Drawing

3.5" , QVGA (TFT) Color Graphics , Landscape , White LED Backlight



**HANTRONIX**