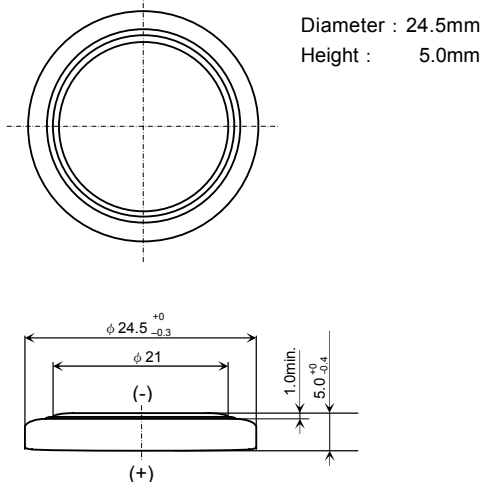


# Lithium Manganese Dioxide Battery

# CR2450

### ■ Dimensions(mm)



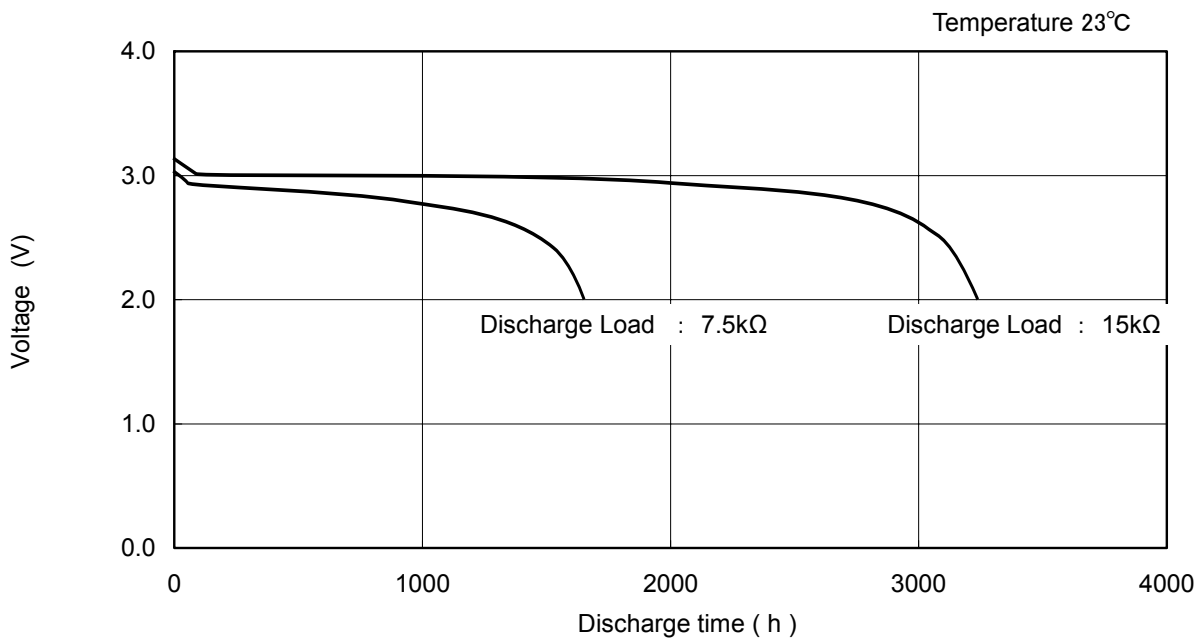
### ■ Specifications

Nominal Voltage	3V
Nominal Capacity ( 2.0V cutoff)	610mAh
Standard Discharge Current	0.4mA
Weight	6.6g

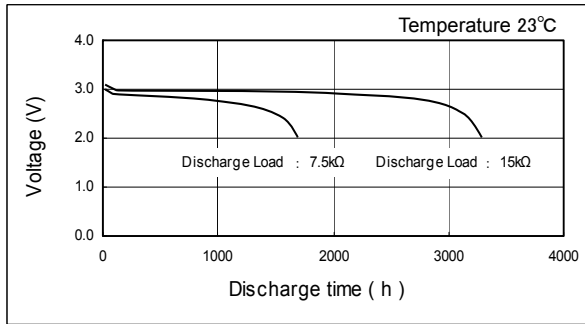
#### Applications

- Memory Back-up Power Source for SRAM or Real Time Clock (RTC)

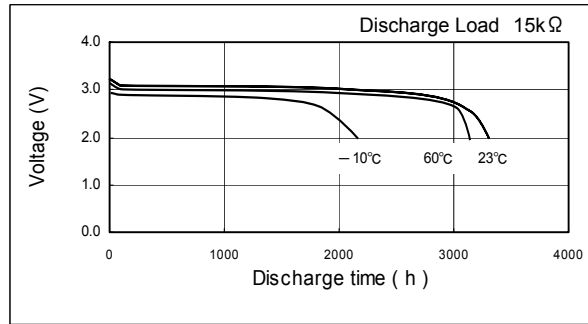
### ■ Discharge Characteristics



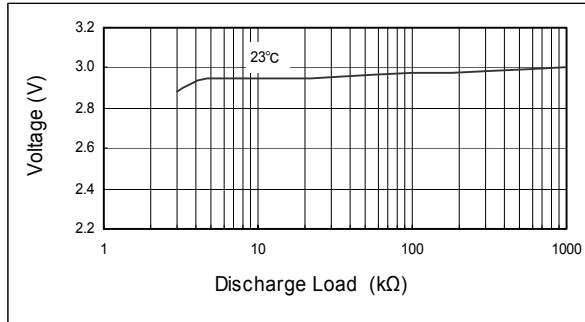
■ Discharge Characteristics on Load



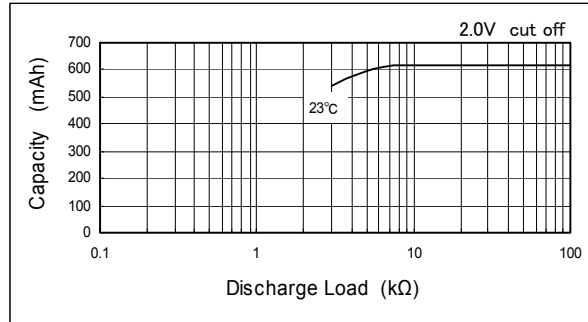
■ Discharge Characteristics on Temperature



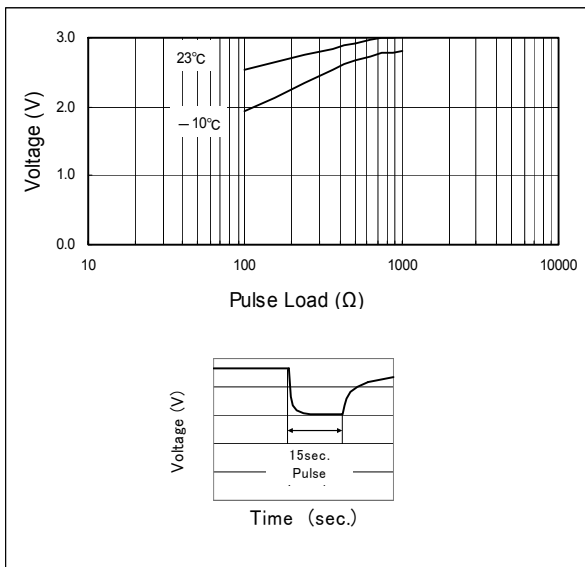
■ Discharge Load vs. Operation Voltage (Discharge depth 40%)



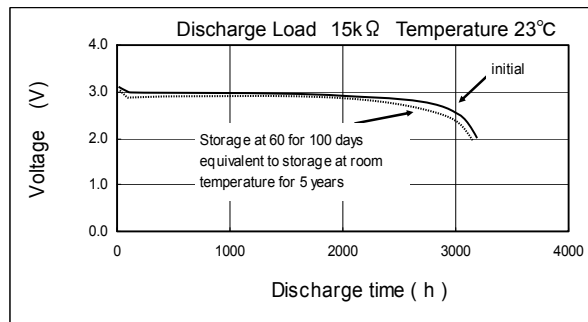
■ Discharge Load vs. Discharge Capacity



■ Discharge Characteristics on Pulse Load (Discharge depth 40%)



■ Storage Characteristics



\* These values are not guarantee.