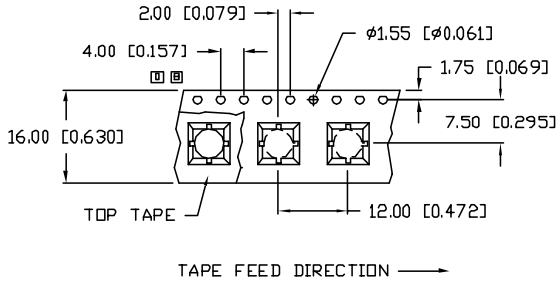
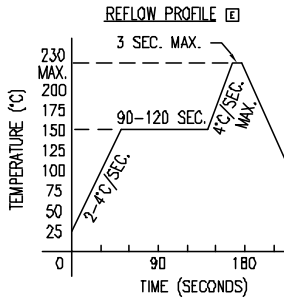
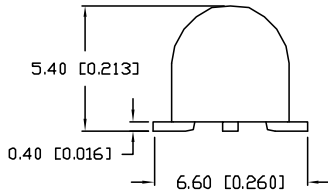
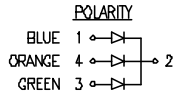
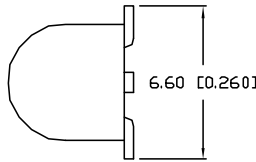
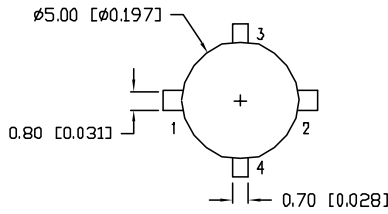
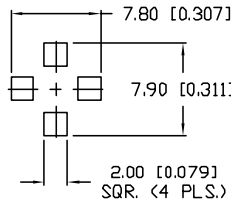


UNCONTROLLED DOCUMENT



RECOMMENDED SOLDER PAD LAYOUT



PART NUMBER		REV.
SML-LXL505SOUPGUSW		E
REV.	E.C.N. NUMBER AND REVISION COMMENTS	DATE
A	E.C.N. #10754.	5.30.01
B	E.C.N. #10766.	6.25.01
C	E.C.N. #10789.	9.27.01
D	E.C.N. #10813.	12.6.01
E	E.C.N. #10966.	3.11.03

ELECTRO-OPTICAL CHARACTERISTICS $T_A=25^\circ\text{C}$ $I_f=20\text{mA}$

PARAMETER	ORANGE	GREEN	BLUE	UNITS	TEST COND
PEAK WAVELENGTH	610	525	470	nm	
FORWARD VOLTAGE (TYP.)	2.0	3.5	3.5	nm	
FORWARD VOLTAGE (MAX.)	2.4	4.0	4.0	V _f	
REVERSE VOLTAGE	5.0	5.0	5.0	V _r	$I_f=100\mu\text{A}$
AXIAL INTENSITY	280	390	100	mcd	$I_f=20\text{mA}$
VIEWING ANGLE	60	60	60	2x theta	
LED POSITION:	4	3	1		

EPOXY LENS FINISH: MILKY WHITE DIFFUSED

LIMITS OF SAFE OPERATION AT 25°C PER CHIP

PARAMETER	COLORS	MAX	UNITS
PEAK FORWARD CURRENT*	(O/G/B)	150/150/200	mA
STEADY CURRENT	(O/G/B)	30/25/30	mA
POWER DISSIPATION		105	mW
DERATE FROM 25°C		-1.2	mW/°C
OPERATING, STORAGE TEMP.		-40 TO +85	°C

* $t < 10\mu\text{s}$

NOTES:

1. THE CATHODE IS ORIENTED TOWARDS THE TAPE SPROCKET HOLE.
2. 500 PCS. PER REEL.

CAUTION: STATIC SENSITIVE DEVICE
FOLLOW PROPER E.S.D. HANDLING PROCEDURES
WHEN WORKING WITH THIS PART.

UNCONTROLLED DOCUMENT

*UNLESS OTHERWISE SPECIFIED TOLERANCES PER DECIMAL PRECISION ARE: X=±1 (±0.039), XX=±0.5 (±0.020), XXX=±0.25 (±0.010), XXXX=±0.127 (±0.005). LEAD SIZE=±0.05 (±0.002), LEAD LENGTH=±0.75 (±0.030). MIN.=^{+DECIMAL PRECISION}0.000 MAX.=^{+0.00}DECIMAL PRECISION

REV.	PART NUMBER
E	SML-LXL505SOUPGUSW
T-5mm (T-1 3/4) SURFACE MOUNT DOMED LED, 4 LEADED, MILKY WHITE DIFFUSED.	

CONFIDENTIAL INFORMATION
THE INFORMATION CONTAINED IN THIS DOCUMENT IS THE PROPERTY OF LUMEX INC. EXCEPT AS SPECIFICALLY AUTHORIZED IN WRITING BY LUMEX INC., THE HOLDER OF THIS DOCUMENT SHALL KEEP ALL INFORMATION CONTAINED HEREIN CONFIDENTIAL AND SHALL PROTECT SAME IN WHOLE OR IN PART FROM DISCLOSURE AND DISSEMINATION TO ALL THIRD PARTIES.

RELIABILITY NOTE
OUR MANY YEARS OF EXPERIENCE DATA ACCUMULATION INDICATE THAT SOLDER HEAT IS A MAJOR CAUSE OF EARLY AND FUTURE FAILURE. PLEASE PAY ATTENTION TO YOUR SOLDERING PROCESS.

290 E. HELEN ROAD
PALATINE, IL 60067-6976
PHONE: +1.847.359.2790
US WEB: www.lumex.com
TW WEB: www.lumex.com.tw

DRAWN BY:	CHECKED BY:	APPROVED BY:	DATE:
CT			5.3.01
			PAGE: 1 OF 1
			SCALE: N/A