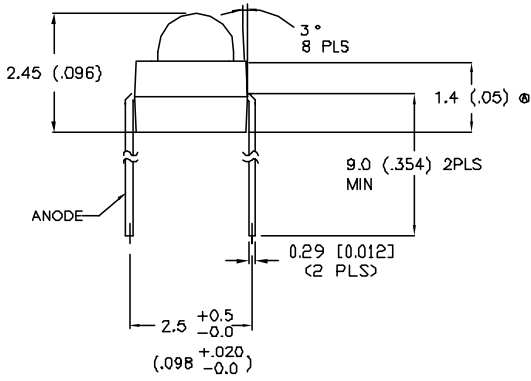
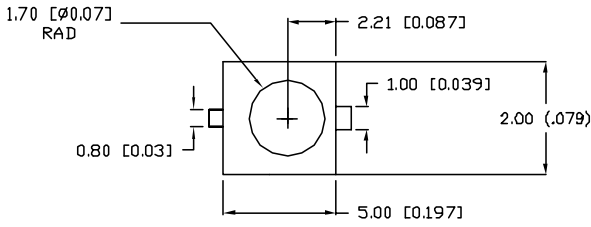


UNCONTROLLED DOCUMENT

PART NUMBER		REV.
SSL-LXA223GC-25737		C
REV.	E.C.N. NUMBER AND REVISION COMMENTS	DATE
A	ADDED DIMENTION A.	5.23.94
B	E.C.N. #10BRDR./	10.13.97
C	E.C.N. #1114B.	03.02.07



ELECTRO-OPTICAL CHARACTERISTICS $T_A=25$, $I_f=20mA$ °C

PARAMETER	MIN	TYP	MAX	UNITS	TEST COND
PEAK WAVELENGTH		565	(GREEN)	nm	
FORWARD VOLTAGE		2.1	2.8	V_f	$I_f=20mA$
REVERSE VOLTAGE	5.0			V_r	$I_r=100\mu A$
AXIAL INTENSITY		40		mcd	$I_f=20mA$
VIEWING ANGLE		100		DEGREES	
EMITTED COLOR :	GREEN				
EPOXY LENS FINISH:	WATER CLEAR				

LIMITS OF SAFE OPERATION AT 25 °C

PARAMETER	MAX	UNITS
PEAK FORWARD CURRENT	30	mA
POWER DISSIPATION	80	mW
DERATE FROM 25 °C	-1.2	mW/ °C
OPERATING TEMP.	-25 TO +70	°C
STORAGE TEMP.	-25 TO +80	°C
LEAD SOLDERING TEMP.	+260	°C
1.6mm FROM BODY		5 SEC. MAX

*UNLESS OTHERWISE SPECIFIED TOLERANCES PER DECIMAL PRECISION ARE: X=±1 (±0.030), XX=±0.5 (±0.020), XXX=±0.25 (±0.010), XXXX=±0.127 (±0.005). LEAD SIZE=±0.05 (0.002), LEAD LENGTH=±0.75 (±0.030), MIN=+DECIMAL PRECISION MAX=-DECIMAL PRECISION

UNCONTROLLED DOCUMENT



REV.	PART NUMBER
C	SSL-LXA223GC-25737

CONFIDENTIAL INFORMATION
 THE INFORMATION CONTAINED IN THIS DOCUMENT IS THE PROPERTY OF LUMEX INC. EXCEPT AS SPECIFICALLY AUTHORIZED IN WRITING BY LUMEX INC., THE HOLDER OF THIS DOCUMENT SHALL KEEP ALL INFORMATION CONTAINED HEREIN CONFIDENTIAL AND SHALL PROTECT SAME IN WHOLE OR IN PART FROM DISCLOSURE AND DISSEMINATION TO ALL THIRD PARTIES.



290 E. HELEN ROAD
 PALATINE, IL 60067-6976
 PHONE: +1.847.359.2790
 US WEB: www.lumex.com
 TW WEB: www.lumex.com.tw

T-2 AXIAL LEADED LED
 WITH FORMED LEADS.

RELIABILITY NOTE
 OUR MANY YEARS OF EXPERIENCE DATA ACCUMULATION INDICATE THAT SOLDER HEAT IS A MAJOR CAUSE OF EARLY AND FUTURE FAILURE. PLEASE PAY ATTENTION TO YOUR SOLDERING PROCESS.

DRAWN BY:	CHECKED BY:	APPROVED BY:	DATE:
JC			1.23.92
			PAGE: 1 OF 1
			SCALE: N/A