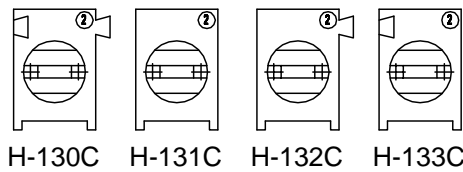
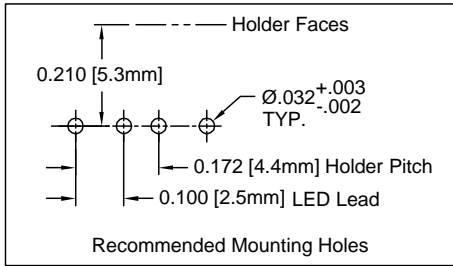
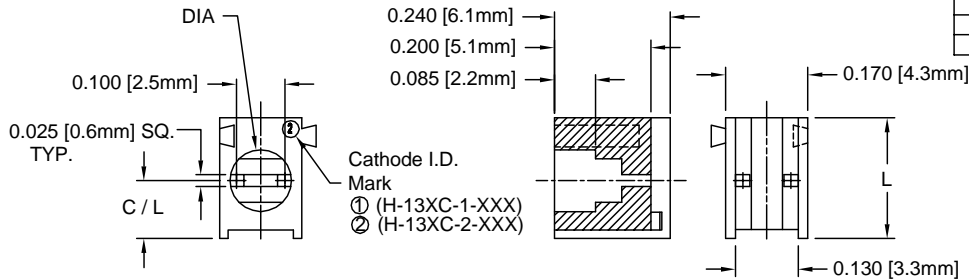


| REV. | DESCRIPTION | DATE | APPROVED |
|------|--------------------------------|----------|----------|
| B | Engineering Update w/o Changes | 02/26/04 | M. C. |
| | | | |
| | | | |



| PART NO. | | | | ID MARK | DIA | C/L | L |
|---------------|---------------|---------------|---------------|---------|--------------|--------------|--------------|
| H-130C SERIES | H-131C SERIES | H-132C SERIES | H-133C SERIES | | | | |
| H-130C-1-120 | H-131C-1-120 | H-132C-1-120 | H-133C-1-120 | ① | .128 [3.3mm] | .120 [3.0mm] | .250 [6.4mm] |
| H-130C-2-120 | H-131C-2-120 | H-132C-2-120 | H-133C-2-120 | ② | .150 [3.8mm] | | |
| H-130C-1-140 | H-131C-1-140 | H-132C-1-140 | H-133C-1-140 | ① | .128 [3.3mm] | .140 [3.6mm] | .270 [6.9mm] |
| H-130C-2-140 | H-131C-2-140 | H-132C-2-140 | H-133C-2-140 | ② | .150 [3.8mm] | | |
| H-130C-1-160 | H-131C-1-160 | H-132C-1-160 | H-133C-1-160 | ① | .128 [3.3mm] | .160 [4.1mm] | .290 [7.4mm] |
| H-130C-2-160 | H-131C-2-160 | H-132C-2-160 | H-133C-2-160 | ② | .150 [3.8mm] | | |
| H-130C-1-180 | H-131C-1-180 | H-132C-1-180 | H-133C-1-180 | ① | .128 [3.3mm] | .180 [4.6mm] | .310 [7.9mm] |
| H-130C-2-180 | H-131C-2-180 | H-132C-2-180 | H-133C-2-180 | ② | .150 [3.8mm] | | |

- 2. MATERIAL: NYLON 6/6, 94V-0, BLACK. BIVAR MATERIAL CODE 22-BK. RTP POLYAMIDE NYLON 6/6, 0200 FR, BLACK OR MODIFIED PLASTICS MN6/6-SE BK.
- 1. GENERAL SPECIFICATIONS: BIVAR MOLDED COMPONENT SPECIFICATION BV00-E101.

| | | | | | |
|---|---------|--|--------------------------|----------------------------------|---|
| STANDARD TOLERANCE (UNLESS OTHERWISE SPECIFIED) | | 4 THOMAS, IRVINE, CA. 92618 TEL: (949) 951-8808 FAX: (949) 951-3974 | | | |
| DECIMALS | ANGULAR | | | | |
| .X ± .1 | X° ± 1° | TITLE: T-1 (3mm) LED HOLDER INTERLOCKING VARIABLE CENTERLINE | | | |
| .XX ± .01 | | | | | |
| .XXX ± .005 | | DESIGNED: Michael Chen | DATE: 01/21/03 | PART NO.: H-13XC-X-XXX | REVISION: B |
| CHECKED: D. Green | | DATE: 01/21/03 | CAGE CODE: 32559 | SHEET # 1 OF 1 | CAD GENERATED DOCUMENT. DO NOT MEASURE DRAWING. |