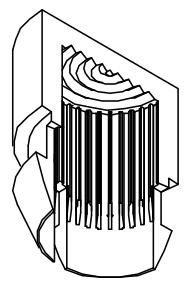
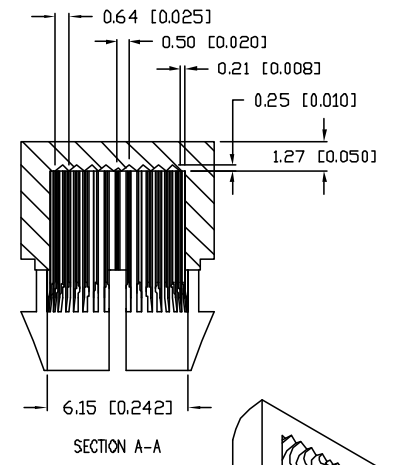
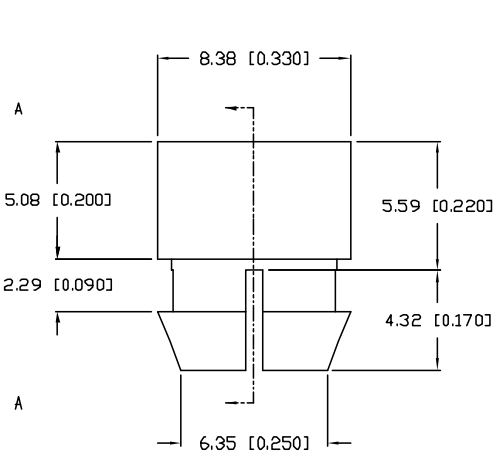
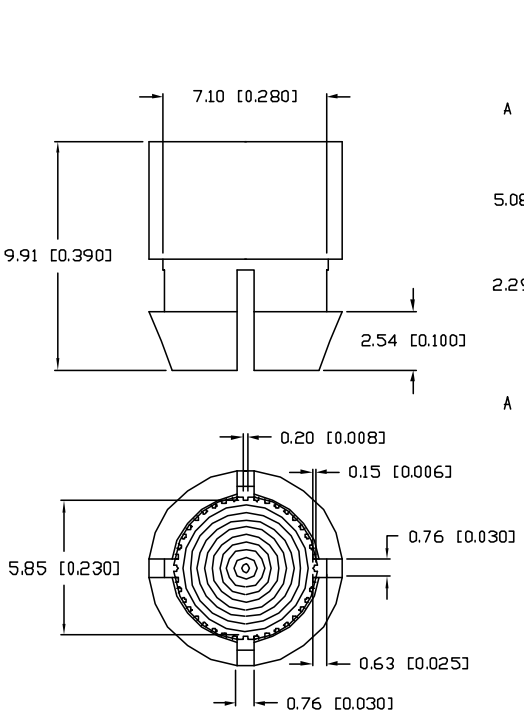


UNCONTROLLED DOCUMENT

PART NUMBER		REV.
SSN-LX13049L-CD		C
REV.	E.C.N. NUMBER AND REVISION COMMENTS	DATE
A	REDRAWN.	7-19-95
B	E.C.N. #10BRDR. & REDRAWN (MODELED).	3-2-99
C	E.C.N. #11148	11.16.06



- NOTES:
1. MATERIAL: POLYCARBONATE LEXAN 123 OR SIMILAR.
 2. COLOR: CLEAR TRANSPARENT.
 3. FINISH: OUTSIDE POLISHED, INSIDE AS MOLDED.
 4. MOUNTING HOLE: 7.37 [0.290"] TO 7.95 [0.313"].

UNCONTROLLED DOCUMENT
*UNLESS OTHERWISE SPECIFIED TOLERANCE IS ±0.25mm (±0.010")

REV.	PART NUMBER
C	SSN-LX13049L-CD

CONFIDENTIAL INFORMATION
THE INFORMATION CONTAINED IN THIS DOCUMENT IS THE PROPERTY OF LUMEX INC. EXCEPT AS SPECIFICALLY AUTHORIZED IN WRITING BY LUMEX INC., THE HOLDER OF THIS DOCUMENT SHALL KEEP ALL INFORMATION CONTAINED HEREIN CONFIDENTIAL AND SHALL PROTECT SAME IN WHOLE OR IN PART FROM DISCLOSURE AND DENMINATION TO ALL THRD PARTIES.

LUMEX INCORPORATED 290 E. HELLEN ROAD
PALATINE, ILLINOIS 60067
PHONE: 1-847-359-2790
WEB: HTTP://WWW.LUMEX.COM

LED PANEL LENS CLIP IN CLEAR POLYCARBONATE.

RELIABILITY NOTE
OUR MANY YEARS OF EXPERIENCE DATA ACCUMULATION INDICATE THAT SOLDER HEAT IS A MAJOR CAUSE OF EARLY AND FUTURE FAILURE. PLEASE PAY ATTENTION TO YOUR SOLDERING PROCESS.

DRAWN BY:	CHECKED BY:	APPROVED BY:	DATE: 11.16.06
jc			PAGE: 1 OF 1
			SCALE: N/A