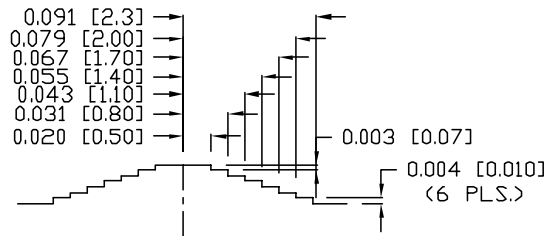
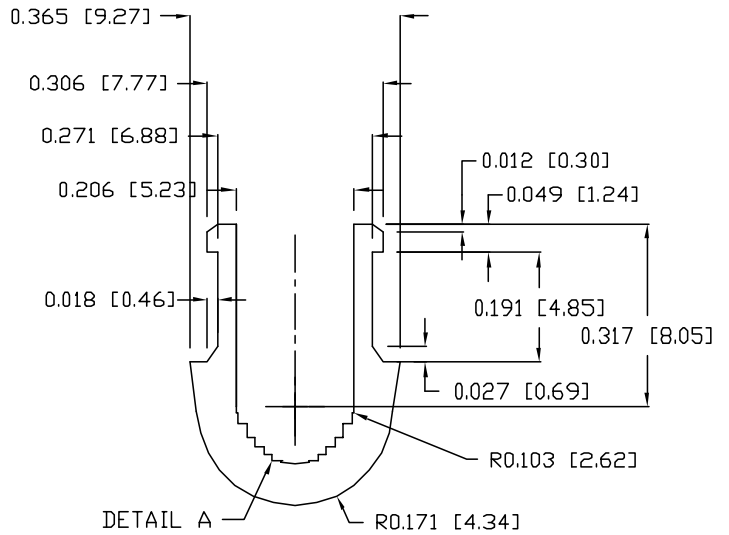
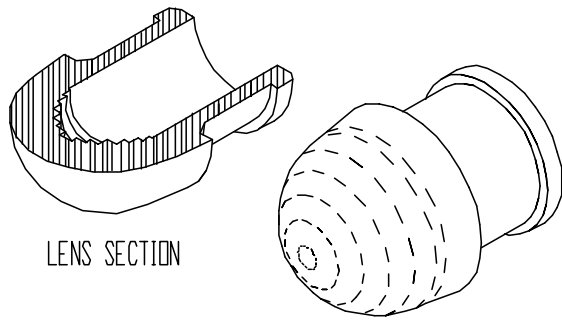


DATE	REVISIONS	REV	DRAWING NUMBER SSN-LX690L1-C	REV
------	-----------	-----	---------------------------------	-----



DETAIL A

MATERIAL: CLEAR POLYCARBONATE

UNITS in. [mm]

		292 E. HELLEN ROAD PALATINE, ILLINOIS 60067 (708) 359-2790		
		<small>CONFIDENTIAL INFORMATION          THE INFORMATION CONTAINED IN THIS DOCUMENT IS THE PROPERTY OF LUMEX OPTO/COMPONENTS, INC. EXCEPT AS SPECIFICALLY AUTHORIZED IN WRITING BY LUMEX OPTO/COMPONENTS, INC., THE HOLDER OF THIS DOCUMENT SHALL KEEP ALL INFORMATION CONTAINED HEREIN CONFIDENTIAL AND SHALL PROTECT SAME IN WHOLE OR IN PART FROM DISCLOSURE AND DISSEMINATION TO ALL THIRD PARTIES.</small>		
DATE: 8-14-95	DWN:	CHK'D:	APPD:	
SCALE: N/A				
PANEL INDICATOR LENS FOR TULIP INDICATOR				
PAGE 1 OF 1	DRAWING NUMBER SSN-LX690L1-C			REV

vs/ps