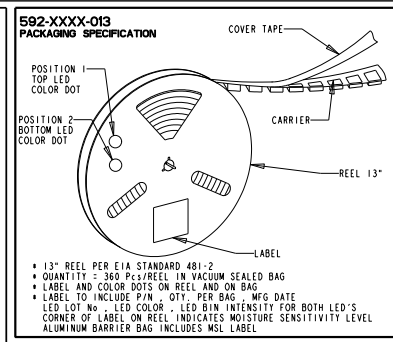
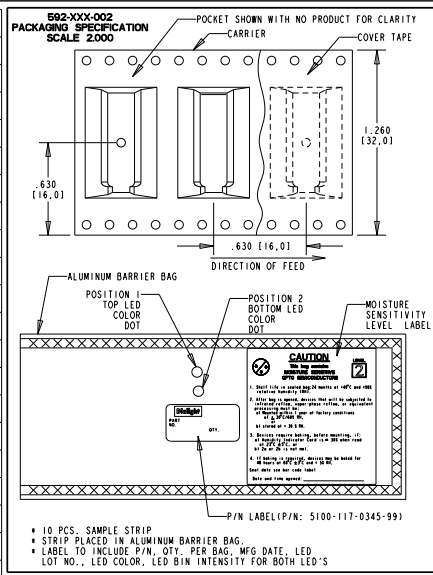


PART NUMBER	POSITION 1	POSITION 2	MOISTURE LEVEL
592-2020-002	RED (H1, EFF1)	RED (H1, EFF1)	2
592-2020-013	RED (H1, EFF1)	GREEN	2
592-2023-002	RED (H1, EFF1)	GREEN	2
592-2023-013	RED (H1, EFF1)	GREEN	2
592-2121-013	RED (A1, GAK1)	RED (A1, GAK1)	2
592-2124-002	RED (A1, GAK1)	YELLOW	2
592-2124-013	RED (A1, GAK1)	YELLOW	2
592-2222-002	GREEN (H1, INT)	GREEN (H1, INT)	2
592-2222-013	GREEN (H1, INT)	GREEN (H1, INT)	2
592-2320-002	GREEN (H1, INT)	RED (H1, EFF)	2
592-2323-002	GREEN (H1, INT)	GREEN (H1, INT)	2
592-2323-013	GREEN (H1, INT)	GREEN (H1, INT)	2
592-2324-002	GREEN (H1, INT)	YELLOW	2
592-2324-013	GREEN (H1, INT)	YELLOW	2
592-2326-002*	GREEN (H1, GAK1)	GREEN (H1, GAK1)	2
592-2326-013*	GREEN (H1, GAK1)	GREEN (H1, GAK1)	2
592-2420-002	YELLOW (H1, EFF)	RED (H1, EFF)	2
592-2420-013	YELLOW (H1, EFF)	RED (H1, EFF)	2
592-2422-002	YELLOW (H1, INT)	GREEN (H1, INT)	2
592-2422-013	YELLOW (H1, INT)	GREEN (H1, INT)	2
592-2423-002	YELLOW (H1, INT)	GREEN (H1, INT)	2
592-2423-013	YELLOW (H1, INT)	GREEN (H1, INT)	2
592-2424-002	YELLOW (H1, INT)	YELLOW (H1, INT)	2
592-2424-013	YELLOW (H1, INT)	YELLOW (H1, INT)	2
592-2525-002	ORANGE (H1, INT)	ORANGE (H1, INT)	2
592-2525-013	ORANGE (H1, INT)	ORANGE (H1, INT)	2
592-2626-002 *	BLUE (H1, GAK1)	BLUE (H1, GAK1)	2
592-2626-013 *	BLUE (H1, GAK1)	BLUE (H1, GAK1)	2
592-2628-002	BLUE (H1, GAK1)	WHITE (H1, GAK1)	2
592-2628-013	BLUE (H1, GAK1)	WHITE (H1, GAK1)	2
592-2631-002	BLUE (H1, GAK1)	YELLOW / GREEN (H1, GAK1)	2
592-2631-013	BLUE (H1, GAK1)	YELLOW / GREEN (H1, GAK1)	2
592-2727-002	YELLOW (A1, IAGAP)	YELLOW (A1, IAGAP)	2
592-2727-013	YELLOW (A1, IAGAP)	YELLOW (A1, IAGAP)	2
592-2828-002 *	WHITE (H1, INT)	WHITE (H1, INT)	2
592-2828-013 *	WHITE (H1, INT)	WHITE (H1, INT)	2
592-3030-002	RED / GREEN (H1, INT)	RED / GREEN (H1, INT)	2
592-3030-013	RED / GREEN (H1, INT)	RED / GREEN (H1, INT)	2
592-3126-002 *	YELLOW / GREEN (H1, GAK1)	BLUE (H1, GAK1)	2
592-3126-013 *	YELLOW / GREEN (H1, GAK1)	BLUE (H1, GAK1)	2
592-3131-002	YELLOW / GREEN (H1, GAK1)	YELLOW / GREEN (H1, GAK1)	2
592-3131-013	YELLOW / GREEN (H1, GAK1)	YELLOW / GREEN (H1, GAK1)	2
592-3232-002	RED / YELLOW (H1, INT)	RED / YELLOW (H1, INT)	2
592-3232-013	RED / YELLOW (H1, INT)	RED / YELLOW (H1, INT)	2
592-3535-002	RED/GREEN/BLUE (H1, INT)	RED/GREEN/BLUE (H1, INT)	2
592-3535-013	RED/GREEN/BLUE (H1, INT)	RED/GREEN/BLUE (H1, INT)	2
592-3031-002	RED/GREEN (H1, INT)	YELLOW/GREEN (H1, INT)	2
592-3031-013	RED/GREEN (H1, INT)	YELLOW/GREEN (H1, INT)	2
* ESD SENSITIVE - SEE CAUTION NOTE			



REV.	ECN NO.	REVISIONS	DRN.	CKD.	APP.	DATE
A		NEW RELEASE	AV	JMC	N.O.	9-28-01
B		ADDED P/N'S: 592-3031-002, 592-3031-013, 592-3028-002 & 592-3028-013	ADM	D.C.	N.O.	2-25-02
C		ADDED P/N'S: 592-2124-002, 592-2124-013, 592-2324-002, 592-2324-013, 592-2423-002, 592-2423-013	YIS	D.C.	N.O.	5-15-02
D		ADDED P/N'S: 592-2631-002, 592-2631-013, CHANGED MOISTURE SENSITIVITY LEVEL TO 2 WAS 4.	RAF	YIS	N.O.	10-4-02
E		ADDED P/N'S: 592-2023-002, -2023-013, -2326-002, AND -2326-013, CHG. PKG DETAIL	JAV	JMC	N.O.	11-18-03
F		ADDED P/N'S: 592-2320-002, -2320-013, -2420-002, AND -2420-013, CHG. PKG DETAIL	JMC	N.O.	MES	6-24-04
G		ADDED LED LEADS TO DEFINING SURFACE A, ADDED P/N'S: 592-2422-002 & 592-2422-013 ADDED BI-COLOR LED SOLDER VIEW.	YIS	AV	Y.C.	9-15-04
H		ADDED 592-3126-002 & -013	JMC			

NOTES:

- STORAGE OF TAPED PARTS SHALL NOT EXCEED TWELVE (12) MONTHS AFTER WHICH RE-PACKAGING IS REQUIRED
- FRONT AND REAR TERMINALS (OF EACH LED) OF THE ASSEMBLY TO BE WITHIN .005 COPLANARITY
- MOISTURE SENSITIVITY LEVEL A LABEL WILL BE PLACED ON THE BAG - CHECK CHART FOR PROPER LEVEL
- *** CAUTION *** FOR PRODUCTS THAT ARE ESD SENSITIVE OBSERVE PRECAUTIONS IN HANDLING ELECTROSTATIC SENSITIVE DEVICES. FOR EYE SAFETY DO NOT STARE DIRECTLY INTO THE LIGHT BEAM OF THESE LED DEVICES AT CLOSE RANGE
- DIALIGHT PART NUMBERS: 592-XXXX-002 (STRIP) 592-XXXX-013 (13" REEL)

