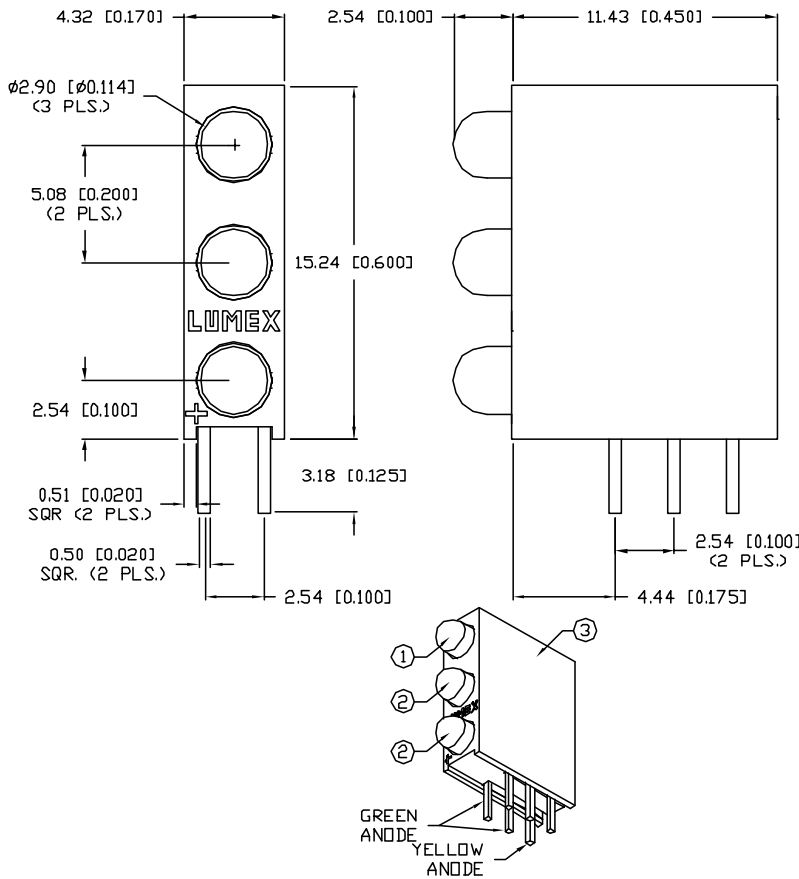


UNCONTROLLED DOCUMENT

PART NUMBER
SSF-LXH340LYGGD

REV.



ELECTRO-OPTICAL CHARACTERISTICS $T_A=25^\circ\text{C}$ $I_f=20\text{mA}$

PARAMETER	YELLOW	GREEN	UNITS	TEST COND
PEAK WAVELENGTH	585	565	nm	
FORWARD VOLTAGE (TYP.)	2.1	2.2	V_f	
FORWARD VOLTAGE (MAX.)	2.5	2.6	V_f	
REVERSE VOLTAGE (TYP.)	5.0	5.0	V_r	$I_f=100\mu\text{A}$
AXIAL INTENSITY (TYP.)	15	15	mcd	$I_f=20\text{mA}$
AXIAL INTENSITY (MIN.)	1.5	1.5	mcd	$I_f=2\text{mA}$
VIEWING ANGLE	60	60	$2x$ theta	
LED POSITION:	1	2~3		

EPOXY LENS FINISH: DIFFUSED SAME AS EMITTED COLOR

LIMITS OF SAFE OPERATION AT 25°C PER LED

PARAMETER	COLORS	MAX	UNITS
PEAK FORWARD CURRENT*		150	mA
STEADY CURRENT	(Y/G)	30/25	mA
POWER DISSIPATION		105	mW
DERATE FROM 25°C		-1.2	$\text{mW}/^\circ\text{C}$
OPERATING, STORAGE TEMP.		-40 TO +85	$^\circ\text{C}$
SOLDERING TEMP.		+260	$^\circ\text{C}$
2.0mm FROM BODY			3 SEC. MAX

* $t < 10\mu\text{s}$

NOTES:

- SSL-LX3044LYD, YELLOW LED.
- SSL-LX3044LGD, GREEN LED. (2 PLS.)
- SSH-LXH340 HOLDER, BLACK NYLON, 94V-0.

UNCONTROLLED DOCUMENT

*UNLESS OTHERWISE SPECIFIED TOLERANCES PER DECIMAL PRECISION ARE: X=±1 (±0.039), XX=±0.5 (±0.020), XXX=±0.25 (±0.010), XXXX=±0.127 (±0.005). LEAD SIZE=±0.05 (±0.002), LEAD LENGTH=±0.75 (±0.030). MIN= -0.000 DECIMAL PRECISION MAX.= +0.000 DECIMAL PRECISION

REV. PART NUMBER
SSF-LXH340LYGGD

CONFIDENTIAL INFORMATION
THE INFORMATION CONTAINED IN THIS DOCUMENT IS THE PROPERTY OF LUMEX INC. EXCEPT AS SPECIFICALLY AUTHORIZED IN WRITING BY LUMEX INC., THE HOLDER OF THIS DOCUMENT SHALL KEEP ALL INFORMATION CONTAINED HEREIN CONFIDENTIAL AND SHALL PROTECT SAME IN WHOLE OR IN PART FROM DISCLOSURE AND DISSEMINATION TO ALL THIRD PARTIES.



290 E. HELEN ROAD
PALATINE, IL 60067-6976
PHONE: +1.847.359.2790
US WEB: www.lumex.com
TW WEB: www.lumex.com.tw

T-3mm RIGHT ANGLE FAULT INDICATOR HOLDER,
ALL LOW CURRENT, POS.1: YELLOW DIFFUSED LED,
POS.2,3: GREEN DIFFUSED LED.

RELIABILITY NOTE
OUR MANY YEARS OF EXPERIENCE DATA ACCUMULATION INDICATE THAT SOLDER HEAT IS A MAJOR CAUSE OF EARLY AND FUTURE FAILURE. PLEASE PAY ATTENTION TO YOUR SOLDERING PROCESS.

DRAWN BY: CT	CHECKED BY:	APPROVED BY:	DATE: 6.27.02 PAGE: 1 OF 1 SCALE: N/A
-----------------	-------------	--------------	---