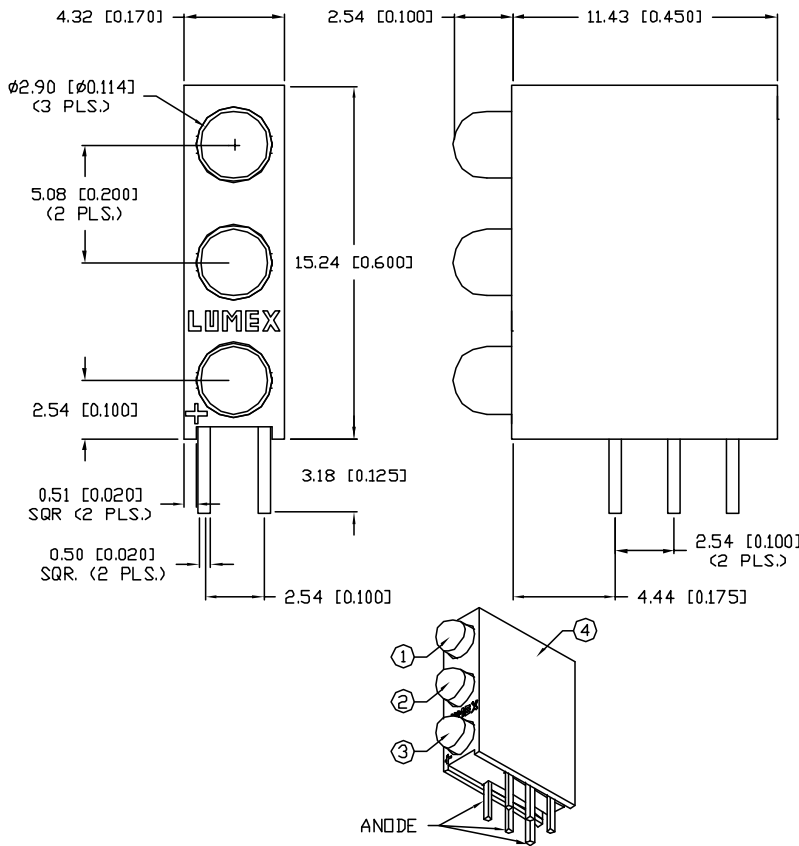


UNCONTROLLED DOCUMENT

PART NUMBER  
SSF-LXH340LGYID

REV.



ELECTRO-OPTICAL CHARACTERISTICS $T_A=25^\circ\text{C}$ $I_f=20\text{mA}$					
PARAMETER	GREEN	YELLOW	RED	UNITS	TEST COND
PEAK WAVELENGTH	565	585	635	nm	
FORWARD VOLTAGE (TYP.)	2.2	2.1	2.0	$V_f$	
FORWARD VOLTAGE (MAX.)	2.6	2.5	2.5	$V_f$	
REVERSE VOLTAGE (TYP.)	5.0	5.0	5.0	$V_r$	$I_f=100\mu\text{A}$
AXIAL INTENSITY (TYP.)	30	30	30	mcd	$I_f=20\text{mA}$
AXIAL INTENSITY (MIN.)	1.0	1.0	1.0	mcd	$I_f=2\text{mA}$
VIEWING ANGLE	60	60	60	$2x$ theta	
LED POSITION:	1	2	3		
EPOXY LENS FINISH: DIFFUSED SAME AS EMITTED COLOR					

LIMITS OF SAFE OPERATION AT  $25^\circ\text{C}$  PER LED

PARAMETER	COLORS	MAX	UNITS
PEAK FORWARD CURRENT*		150	mA
STEADY CURRENT	(G/Y/R)	25/30/30	mA
POWER DISSIPATION		105	mW
DERATE FROM $25^\circ\text{C}$		-1.6	$\text{mW}/^\circ\text{C}$
OPERATING, STORAGE TEMP.		-40 TO +85	$^\circ\text{C}$
SOLDERING TEMP.		+260	$^\circ\text{C}$
2.0mm FROM BODY			3 SEC. MAX

\*  $t < 10\mu\text{s}$

NOTES:

1. SSL-LX3044LGD, GREEN LED.
2. SSL-LX3044LYD, YELLOW LED.
3. SSL-LX3044LID, RED LED.
3. SSH-LXH340 HOLDER, BLACK NYLON, 94V-0.

UNCONTROLLED DOCUMENT

\*UNLESS OTHERWISE SPECIFIED TOLERANCES PER DECIMAL PRECISION ARE: X= $\pm 1$  ( $\pm 0.039$ ), XX= $\pm 0.5$  ( $\pm 0.020$ ), XXX= $\pm 0.25$  ( $\pm 0.010$ ), XXXX= $\pm 0.127$  ( $\pm 0.005$ ). LEAD SIZE= $\pm 0.05$  ( $\pm 0.002$ ), LEAD LENGTH= $\pm 0.75$  ( $\pm 0.030$ ). MIN= $\frac{\text{DECIMAL PRECISION}}{0.00}$  MAX= $\frac{+0.00}{\text{DECIMAL PRECISION}}$

REV.	PART NUMBER SSF-LXH340LGYID
------	--------------------------------

CONFIDENTIAL INFORMATION  
THE INFORMATION CONTAINED IN THIS DOCUMENT IS THE PROPERTY OF LUMEX INC. EXCEPT AS SPECIFICALLY AUTHORIZED IN WRITING BY LUMEX INC., THE HOLDER OF THIS DOCUMENT SHALL KEEP ALL INFORMATION CONTAINED HEREIN CONFIDENTIAL AND SHALL PROTECT SAME IN WHOLE OR IN PART FROM DISCLOSURE AND DISSEMINATION TO ALL THIRD PARTIES.



290 E. HELEN ROAD  
PALATINE, IL 60067-6976  
PHONE: +1.847.359.2790  
US WEB: www.lumex.com  
TW WEB: www.lumex.com.tw

T-3mm RIGHT ANGLE FAULT INDICATOR HOLDER,  
ALL LOW CURRENT, POS.1: GREEN DIFFUSED LED,  
POS.2: YELLOW DIFFUSED LED, POS.3: RED DIFFUSED LED.

RELIABILITY NOTE  
OUR MANY YEARS OF EXPERIENCE DATA ACCUMULATION INDICATE THAT SOLDER HEAT IS A MAJOR CAUSE OF EARLY AND FUTURE FAILURE. PLEASE PAY ATTENTION TO YOUR SOLDERING PROCESS.

DRAWN BY: BC	CHECKED BY:	APPROVED BY:	DATE: 11.24.02 PAGE: 1 OF 1 SCALE: N/A
-----------------	-------------	--------------	--