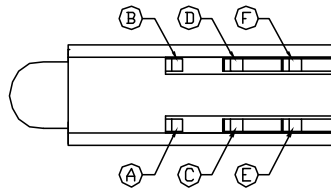
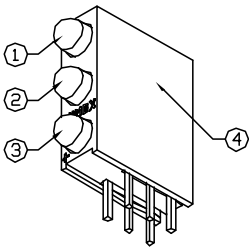
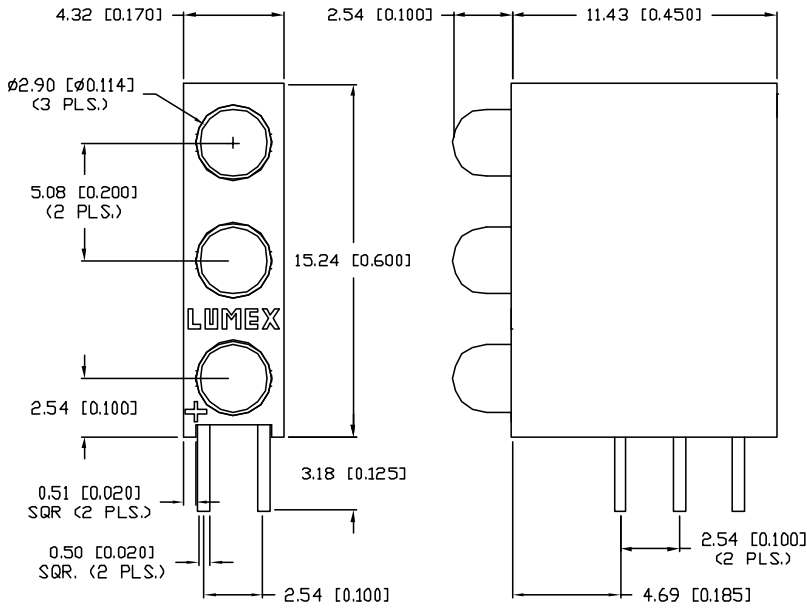


UNCONTROLLED DOCUMENT

PART NUMBER
SSF-LXH340SBYGD

REV.



LEAD NOTES:

- A. GREEN ANODE.
- B. GREEN CATHODE.
- C. YELLOW ANODE.
- D. YELLOW CATHODE.
- E. BLUE ANODE.
- F. BLUE CATHODE.

NOTES:

- 1. SSL-LX3044SBD/A, BLUE LED.
- 2. SSL-LX3044YD, YELLOW LED.
- 3. SSL-LX3044GD, GREEN LED.
- 4. SSH-LXH340 HOLDER, BLACK NYLON, 94V-0.

CAUTION: STATIC SENSITIVE DEVICE
FOLLOW PROPER E.S.D. HANDLING PROCEDURES
WHEN WORKING WITH THIS PART.

| ELECTRO-OPTICAL CHARACTERISTICS T _A =25°C I _F =20mA | | | | | |
|---|--|--------|-------|----------------|-----------------------|
| PARAMETER | BLUE | YELLOW | GREEN | UNITS | TEST COND |
| PEAK WAVELENGTH | 430 | 585 | 565 | nm | |
| FORWARD VOLTAGE (TYP.) | 4.5 | 2.1 | 2.2 | V _f | |
| FORWARD VOLTAGE (MAX.) | 5.5 | 2.5 | 2.6 | V _f | |
| REVERSE VOLTAGE | 5.0 | 5.0 | 5.0 | V _r | I _F =100μA |
| AXIAL INTENSITY | 30 | 30 | 40 | mcd | I _F =20mA |
| VIEWING ANGLE | 60 | 60 | 60 | 2x theta | |
| LED POSITION: | 1 | 2 | 3 | | |
| EPOXY LENS FINISH: | POS. 1: BLUE DIFFUSED POS. 2: YELLOW DIFFUSED POS. 3: GREEN DIFFUSED | | | | |

LIMITS OF SAFE OPERATION AT 25°C PER DIE

| PARAMETER | COLORS | MAX | UNITS |
|--------------------------|---------|------------|------------|
| PEAK FORWARD CURRENT* | (B/Y/G) | 98/150/150 | mA |
| STEADY CURRENT | (B/Y/G) | 30/30/25 | mA |
| POWER DISSIPATION | | 105 | mW |
| DERATE FROM 25°C | | -1.2 | mW/°C |
| OPERATING, STORAGE TEMP. | | -40 TO +85 | °C |
| SOLDERING TEMP. | | +260 | °C |
| 2.0mm FROM BODY | | | 3 SEC. MAX |

* t<10μS

*UNLESS OTHERWISE SPECIFIED TOLERANCES PER DECIMAL PRECISION ARE: X=±1 (±0.039), XX=±0.5 (±0.020), XXX=±0.25 (±0.010), XXXX=±0.127 (±0.005). LEAD SIZE=±0.05 (±0.002), LEAD LENGTH=±0.75 (±0.030). MIN= -0.000 DECIMAL PRECISION MAX.= +0.000 DECIMAL PRECISION

UNCONTROLLED DOCUMENT

| | |
|------|--------------------------------|
| REV. | PART NUMBER SSF-LXH340SBYGD |
|------|--------------------------------|

CONFIDENTIAL INFORMATION
THE INFORMATION CONTAINED IN THIS DOCUMENT IS THE PROPERTY OF LUMEX INC. EXCEPT AS SPECIFICALLY AUTHORIZED IN WRITING BY LUMEX INC., THE HOLDER OF THIS DOCUMENT SHALL KEEP ALL INFORMATION CONTAINED HEREIN CONFIDENTIAL AND SHALL PROTECT SAME IN WHOLE OR IN PART FROM DISCLOSURE AND DISSEMINATION TO ALL THIRD PARTIES.



290 E. HELEN ROAD
PALATINE, IL 60067-6976
PHONE: +1.847.359.2790
US WEB: www.lumex.com
TW WEB: www.lumex.com.tw

T-3mm (T-1) RIGHT ANGLE FAULT INDICATOR HOLDER,
POS. 1: 430nm SUPER BLUE LED,
POS. 2: 585nm YELLOW , POS. 3: 565nm GREEN LEDS.

RELIABILITY NOTE
OUR MANY YEARS OF EXPERIENCE DATA ACCUMULATION INDICATE THAT SOLDER HEAT IS A MAJOR CAUSE OF EARLY AND FUTURE FAILURE. PLEASE PAY ATTENTION TO YOUR SOLDERING PROCESS.

| | | | |
|-----------------|-------------|--------------|---------------|
| DRAWN BY: JD | CHECKED BY: | APPROVED BY: | DATE: 3.23.05 |
| | | | PAGE: 1 OF 1 |
| | | | SCALE: N/A |