

4

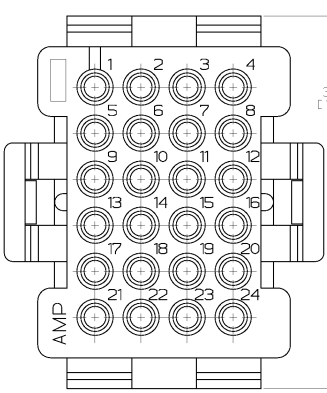
3

2

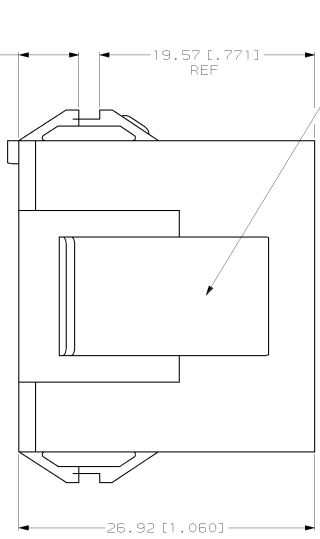
1

THIS DRAWING IS UNPUBLISHED.
 RELEASED FOR PRELIMINARY PURPOSES.
 COPYRIGHT © BY AMP INCORPORATED. ALL RIGHTS RESERVED.

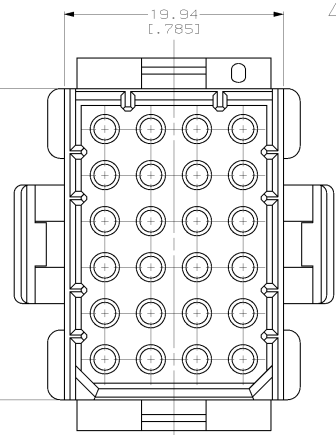
REV	DATE	DESCRIPTION	BY	CHK	APP'D
CM	52				
D		REV PER EC 0L30-0015-97			



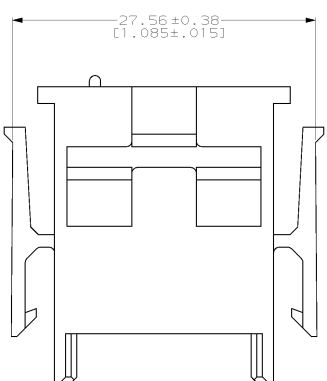
5.46 [0.215] REF
 19.57 [0.771] REF
 33.91 ± 0.38 [1.335 ± 0.015]



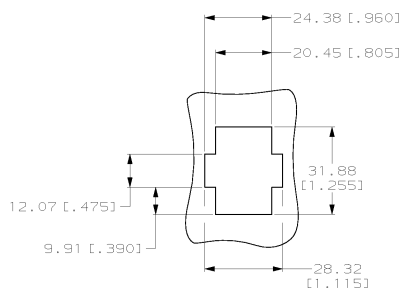
28.32 [1.115]



- MATES WITH HOUSING 640525.
- UL LOGO AND CSA LOGO TO APPEAR ON EITHER LATCH SURFACE PER AMP SPEC 202-20, I.D. NO. 1-18838-3 AND 1-18839-3. FROST BACKGROUND OPTIONAL.
- DIMENSIONS IN BRACKETS ARE IN INCHES.



27.56 ± 0.38 [1.085 ± 0.015]



RECOMMENDED CUT OUT FOR 1.73 [0.068] MAX THICK PANEL
 SCALE 1:1



1-640515-0
 PART NUMBER

THIS DRAWING IS A CONTROLLED DOCUMENT		DATE	7-12-96	AMP AMP Incorporated Harrisburg, PA 17105-3608
DRAWN BY		R. VESTAL	7-12-96	
CHECKED BY		S. SWING	7-12-96	NAME HOUSING, CAP MR11 24 POSITION
DESIGNED BY		A. BENDIZIK	7-12-96	
DIMENSIONS mm (INCHES)		PRODUCT SPEC		SIZE
1 PLC	±	APPLICATION SPEC		CODE CODE
2 PLC	±	REMARK		DRAWING NO
3 PLC	±			A2100779
4 PLC	±			SCALE
ANGLES	±			4:1
MATERIAL: NYLON, UL 94V-0, NATURAL (BRICK RED)		CUSTOMER DRAWING		SHEET
				1 OF 1
				REV
				0