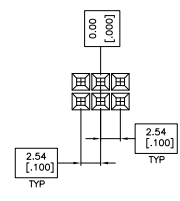
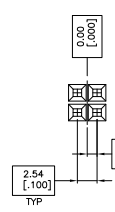
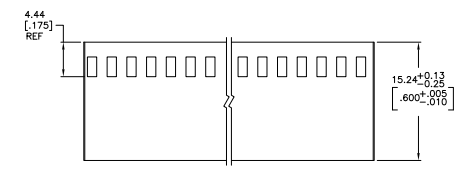
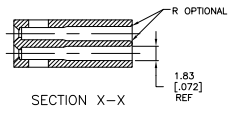
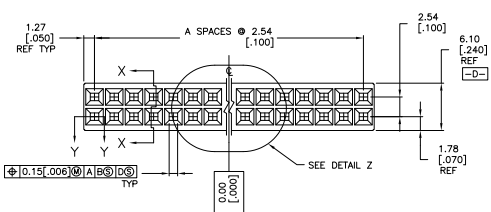
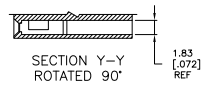
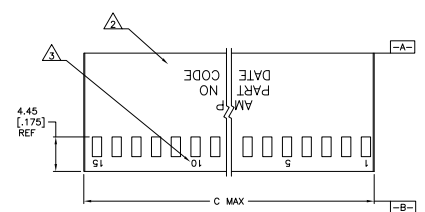


- △ OBSOLETE PART NO.
- △ "AMP", PART NO. AND DATE CODE MARKED (WHITE), .062±.015 CHARS. WHEN HOUSING SIZE PERMITS
- △ .046±.015 CHARS. MARKED (WHITE) FIRST AND EVERY 5TH CAVITY, ONE SIDE.
- △ SUPERSEDED BY 3-87456-3.
- △ SUPERSEDED BY 4-87456-5.
- △ OBSOLETE PARTS: OBSOLETE CIS STREAMLINING PER D.RENAUD/D.SINISI



BASIC DIMENSION FOR ODD NO. OF SPACES (SEE TABLE)

BASIC DIMENSION FOR EVEN NO. OF SPACES (SEE TABLE)

DETAIL Z

REV	DATE	DESCRIPTION	BY	CHK	APP
AD	00				
P2		REVISED PER EDD-11-004587			11MMH11 RK HMR

REV	DATE	DESCRIPTION	BY	CHK	APP
6-87456-5	81.28 [3.200]		31	64	△ 6-87456-6
△ 6-87456-3	73.66 [2.900]		28	58	6-87456-4 △
△ 6-87456-1	71.12 [2.800]		27	56	6-87456-2 △
5-87456-9	60.96 [2.400]		23	48	△ 6-87456-8
△ 5-87456-7	83.82 [3.300]		32	66	△ 5-87456-4
△ 5-87456-5	88.90 [3.505]		34	70	5-87456-6 △
5-87456-3	2.67 [1.105]		-	2	-
5-87456-1	76.33 [3.005]		29	60	5-87456-2
4-87456-9	5.21 [2.05]		1	4	5-87456-0
4-87456-7	91.57 [3.605]		35	72	△ 4-87456-8
4-87456-5	68.71 [2.705]		26	54	4-87456-6 △
4-87456-3	53.47 [2.105]		20	42	△ 4-87456-4
4-87456-1	66.17 [2.605]		25	52	△ 4-87456-2
3-87456-9	63.63 [2.505]		24	50	4-87456-0
3-87456-7	56.01 [2.205]		21	44	3-87456-8
3-87456-5	50.93 [2.005]		19	40	3-87456-6
3-87456-3	48.39 [1.905]		18	38	3-87456-4 △
3-87456-1	45.85 [1.805]		17	36	△ 3-87456-2
2-87456-9	43.31 [1.705]		16	34	3-87456-0
2-87456-7	40.77 [1.605]		15	32	△ 2-87456-8
2-87456-5	38.23 [1.505]		14	30	2-87456-6
2-87456-3	35.69 [1.405]		13	28	2-87456-4
2-87456-1	33.15 [1.305]		12	26	2-87456-2
1-87456-9	30.61 [1.205]		11	24	2-87456-0
1-87456-7	28.07 [1.105]		10	22	1-87456-8
1-87456-5	25.53 [1.005]		9	20	1-87456-6
1-87456-3	22.99 [905]		8	18	1-87456-4
1-87456-1	20.45 [805]		7	16	1-87456-2
87456-9	17.91 [705]		6	14	1-87456-0
87456-7	15.37 [605]		5	12	87456-8
87456-5	12.83 [505]		4	10	87456-6
87456-3	10.29 [405]		3	8	87456-4
87456-1	7.75 [305]		2	6	87456-2

PART NO. WITHOUT MARKING	C	A	NO. OF POSITIONS	PART NO. MARKED
1-87456-7	28.07 [1.105]	10	22	1-87456-8
1-87456-5	25.53 [1.005]	9	20	1-87456-6
1-87456-3	22.99 [905]	8	18	1-87456-4
1-87456-1	20.45 [805]	7	16	1-87456-2
87456-9	17.91 [705]	6	14	1-87456-0
87456-7	15.37 [605]	5	12	87456-8
87456-5	12.83 [505]	4	10	87456-6
87456-3	10.29 [405]	3	8	87456-4
87456-1	7.75 [305]	2	6	87456-2

THIS DRAWING IS A CONTROLLED DOCUMENT. DATE REVISIONS: 11-08-87

TE Connectivity

HOUSING, MOD IV  
 DOUBLE ROW, .100X.100 C/L  
 CRAMP, CRAMP-IN, SHORT ENTRY

SIZE: 4-1

DATE: 11-08-87

BY: [Signature]

CHK: [Signature]

APP: [Signature]

REVISED PER EDD-11-004587

1007798-87456

CUSTOMER DRAWING