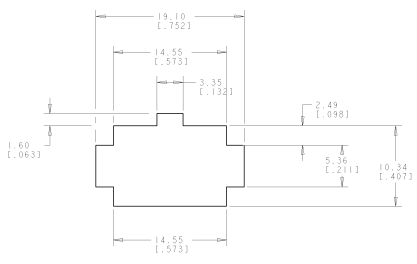
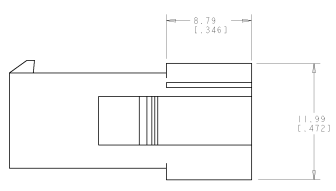
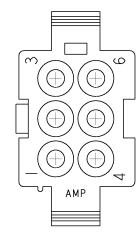
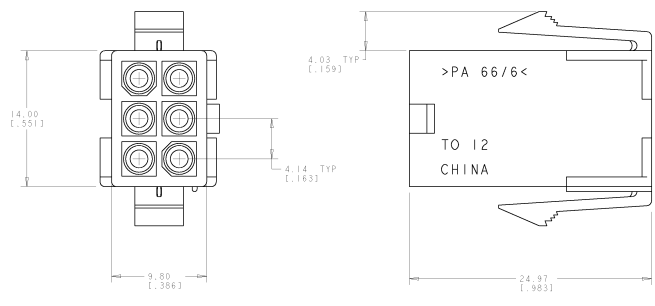


8	7	6	5	4	3	2	1
DATE MANUFACTURE	REVISIONS FOR IDENTIFICATION						
CM	00						

REV	DATE	DESCRIPTION	BY	CHK	APP
00					
01		REVISED PER 0628-0251-04			

1. APPLICABLE CONTACT P/N: 170539, 170360, 170361, 170362.
 2. DIMENSIONS IN BRACKETS ARE IN INCHES.
- △ RECOMMENDED PANEL THICKNESS TO BE 0.8-2.0 (0.031-0.0793).
- △ HOUSING INSERTION INTO THE PANEL CUT OUT MUST BE IN THE SAME DIRECTION AS THE PUNCH.



RECOMMENDED PANEL CUT OUT
SCALE 4:1

79490-1
PART NUMBER



DATE: 06/22/2001 BY: JONES CHECKED: JONES DATE: 06/23/2001 BY: JONES CHECKED: JONES		Stycor The Electronics Manufacturing, PA 16805-8808
PART NUMBER: 79490-1 QUANTITY: 1000 UNIT: 1000	DESCRIPTION: 6 CIRCUIT SEALED APPLICATION MINI UNIVERSAL MATE-N-LOK TR	CAP. 6 00778 (2)-794940 100778 (2)-794940
CUSTOMER DRAWING:	PART: 5.1 REV: 1 DATE: 06/22/2001	DRAWN BY: JONES CHECKED BY: JONES DATE: 06/23/2001