

4


3

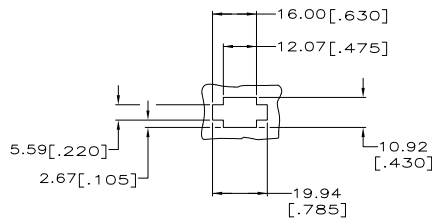
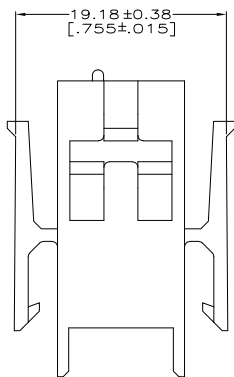
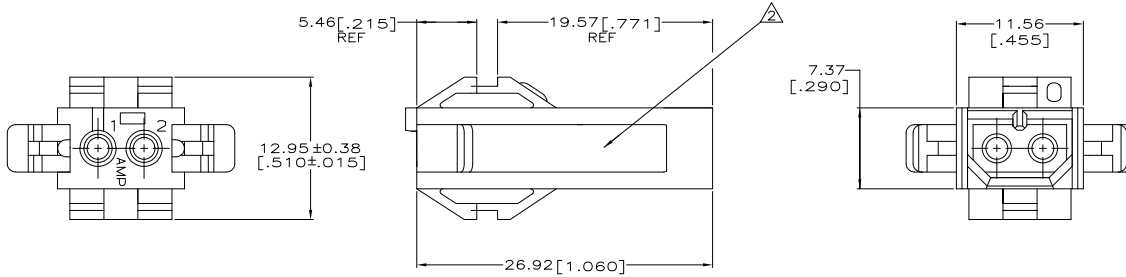
2

1

THIS DRAWING IS UNPUBLISHED. RELEASED FOR PUBLICATION
 © COPYRIGHT - By - ALL RIGHTS RESERVED.

LOC	DIST	REVISIONS			
F	LNK	DESCRIPTION	DATE	BY	APPD
CM	52	H1	REVISED PER ECO-11-004917	11MAR11	RK HMR


- MATES WITH HOUSING 640517.
-  UL LOGO AND CSA LOGO TO APPEAR ON EITHER LATCH SURFACE PER AMP SPEC 202-20, I.D. NO. 1-18838-3 AND 1-18839-3. FROST BACKGROUND OPTIONAL.
- DIMENSIONS IN BRACKETS ARE IN INCHES.



RECOMMENDED CUT OUT
 FOR 1.73 [.068] MAX THICK PANEL
 SCALE 1:1



1-640507-0
 PART NUMBER

THIS DRAWING IS A CONTROLLED DOCUMENT.		DR	R. VESTAL	7-12-98	 TE Connectivity HOUSING, CAP MRLI 2 POSITION RESTRICTED TO
DIMENSIONS: mm [INCHES]		CHK	S. SWING	7-12-98	
TOLERANCES UNLESS OTHERWISE SPECIFIED:		APPD	A. BRIDGICK	7-12-98	
0 PLG ± .005		PRODUCT SPEC		NAME	
1 PLG ± .005		APPLICATION SPEC		SIZE	
2 PLG ± 0.15 [0.005]		WEIGHT		CAGE CODE	
3 PLG ± .005		CUSTOMER DRAWING		DRAWING NO	
4 PLG ± .005		SCALE		4:1	
ANGLES ± 0.30°		SHEET		1 of 1	
FINISH		REV		H1	
MATERIAL: NYLON, UL 94V-0, NATURAL (BRICK RED)					

1471-9 (3/11)

640507

B

A