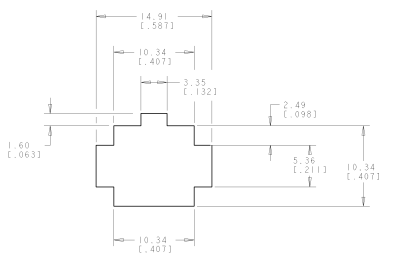
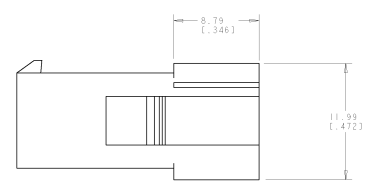
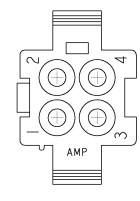
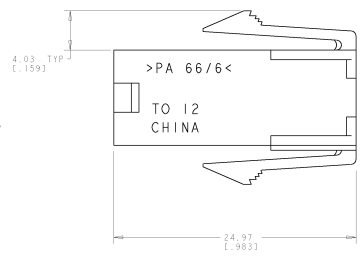
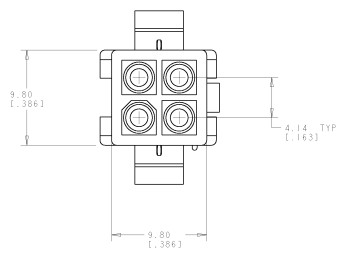


8	7	6	5	4	3	2	1
DATE MANUFACTURED	REVISIONS FOR IDENTIFICATION						
00	00						

REV	DATE	DESCRIPTION	BY	CHK	APP
00					
1		REVISED PER 0628-0251-04	ELANON	PA	C.J.

1. APPLICABLE CONTACT P/N: 170539, 170360, 170361, 170362.
 2. DIMENSIONS IN BRACKETS ARE IN INCHES.
- △ RECOMMENDED PANEL THICKNESS TO BE 0.8-2.0 (0.031-0.0793).
- △ HOUSING INSERTION INTO THE PANEL CUT OUT MUST BE IN THE SAME DIRECTION AS THE PUNCH.



RECOMMENDED PANEL CUT OUT
SCALE 4:1

PART NUMBER
794939-1



DATE: 06/22/2001 BY: JONES CHECKED: JONES DATE: 06/23/2001 APPROVED: JONES DATE: 06/23/2001		Stycor Electronic Erie, PA 16515-1608
PART NUMBER: 794939-1 DESCRIPTION: 4 CIRCUIT SEALED APPLICATION MINI UNIVERSAL MATE-N-LOK TR	QTY: 1000 UNIT: 1000	PART NUMBER: 794939-1 DESCRIPTION: 4 CIRCUIT SEALED APPLICATION MINI UNIVERSAL MATE-N-LOK TR