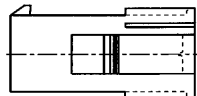
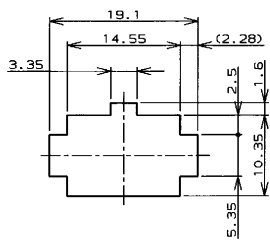
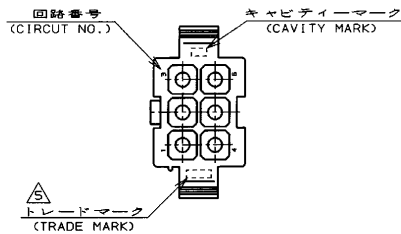
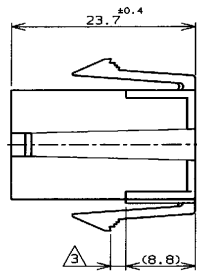
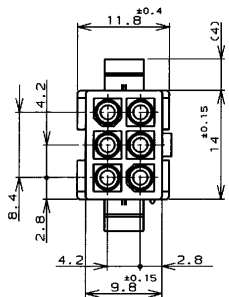


THIS DRAWING IS UNPUBLISHED. RELEASED FOR PUBLICATION .19  
 (C) COPYRIGHT 19 BY AMP INCORPORATED. ALL RIGHTS RESERVED.

LOC		DIST		REVISIONS			
P	LTR	DESCRIPTION	ECN	DATE	DWN	APVD	
	D	再作成 (REDRAWN)	FJ00-0871-98	8 Jun 98			MS



寸法公差は±0.20 (TOLERANCE: ±0.20)  
 パネル取付穴 (RECOMMENDED PANEL OPENING DIMENSION)

- 注記:  
 1. 使用端子型番は170359, 170360, 170361, 170362  
 2. 嵌合相手ハウジング型番は172168  
 ③ 適用パネル厚 0.8-2.0mm  
 4. 取付穴打抜方向とハウジングの挿入方向は同じとする。  
 表1参照
- NOTE:  
 1. APPLICABLE CONT P/N: 170359, 170360, 170361, 170362  
 2. MATING HSG P/N: 172168  
 ③ APPLICABLE PANEL THICKNESS: 0.8-2.0mm  
 4. HOUSING INSERTION INTO THE PANEL CUT-OUT MUST BE DONE IN THE SAME DIRECTION WITH PUNCH KNOCKING.  
 ③ SEE TABLE 1

表1 (TABLE 1)

トレードマーク (TRADE MARK)	生産場所 (MANUFACTURING PLACES)
-AMP OR AMP	日本 (JAPAN)
+AMP OR AMP	中国 (CHINA/PRC)

黒 (BLACK)	1-172160-9
青 (BLUE)	1- -6
緑 (GREEN)	1- -5
赤 (RED)	1- -2
自然色 (NATURAL)	172160-1
色 (COLOR)	型番 (P/N)
WIRE RANGE 嵌合電線断面	INSULATION DIA 被覆外径

THIS DRAWING IS A CONTROLLED DOCUMENT FOR AMP INCORPORATED. IT IS SUBJECT TO CHANGE AND THE CONTROLLING ENGINEERING ORGANIZATION SHOULD BE CONTACTED FOR THE LATEST REVISION.		DWN 2 Jun 98 CHK M.S. 15 Jun 98 APVD M.S. 15 Jun 98
DIMENSIONS: 単位: ㎜ (mm)	TOLERANCES UNLESS OTHERWISE SPECIFIED: 一般公差 (GENERAL TOLERANCE) ±0.3	PRODUCT SPEC: 108-5138 INSTRUCTION SHEET: IS-105J WEIGHT: ---
MATERIAL 66ナイロン UL94V-0 (66NYLON UL94V-0)	FINISH 仕上げ ---	
AMP 1470-19 REV 10/93 ptj00006		NAME: AMP Kawasaki, Japan 6Pos ミニユニバーサルメイトンロックキャップハウジング (UL94V-0) 6Pos MINI UNIVERSAL MATE-N-LOCK CONN. CAP HOUSING (UL94V-0) SIZE: A3 CAGE CODE: 00779 DRAWING NO: 172160 CUSTOMER DRAWING SCALE: 2-1 SHEET 1 OF 1 REV D

参考図面