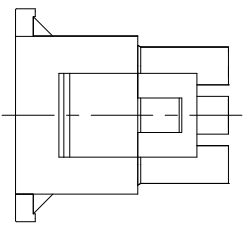
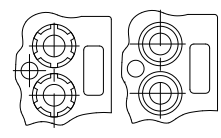
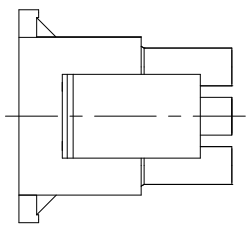


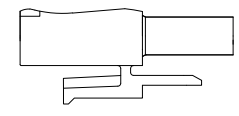
- MATES WITH APPROPRIATE UNIVERSAL MATE-N-LOK™ CAP OR HEADER.
 - SMALL NICKS ARE PERMITTED ON THE CIRCUIT TOWERS WHICH COULD INCREASE THE INITIAL HOUSING MATING FORCE BY UP TO 4.4 NEWTONS [1.0] LBS. NO INDIVIDUAL NICKED TOWER SHALL INCREASE THIS FORCE BY OVER 2.2 NEWTONS [.5] LBS.
- △ DIMENSION INDICATED IS AS MOLDED. ADDITIONAL GROWTH DUE TO SUBSEQUENT MOISTURE ABSORPTION MAY OCCUR.
 - △ FOUR RIBS EQUALLY SPACED, NO SPECIFIC ORIENTATION, NO RIBS OR SIX RIBS EQUALLY SPACED, NO SPECIFIC ORIENTATION, OPTIONAL.
 - △ NOT MANUFACTURED IN U.S.
 - △ UNDERWRITERS RECOGNIZED COMPONENT LOGO AND CSA CERTIFICATION LOGO TO BE LOCATED ONCE ON EACH SIDE OF HOUSING.



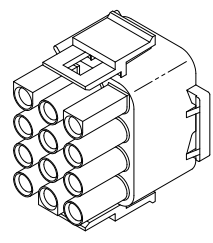
VIEW A-A
350735-4 ONLY



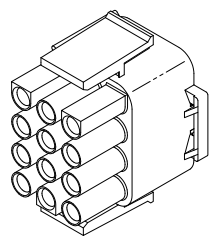
DETAIL A
OPTIONAL CONSTRUCTION



DETAIL B
350735-4 ONLY



350735-4 3-DIMENSIONAL MODEL
NOT TO SCALE



3-DIMENSIONAL MODEL
NOT TO SCALE

| | |
|-------|-------|
| 27.43 | 1.080 |
| 26.67 | 1.050 |
| 20.32 | .800 |
| 11.68 | .460 |
| 0.38 | .015 |
| 0.13 | .005 |
| MM | IN |

CONVERSION TABLE
 484 010

| | |
|--------------------------|------------------|
| BLACK | 1-350735-9 |
| GRAY | 1-350735-8 |
| BLUE | 1-350735-6 |
| GREEN | 1-350735-5 |
| YELLOW | 1-350735-4 |
| ORANGE | 1-350735-3 |
| RED | 1-350735-2 |
| BROWN | 1-350735-1 |
| SUPERCEDED BY 1-350735-2 | |
| △ | RED 350735-5 |
| △ | 350735-4 |
| △ | NATURAL 350735-1 |
| COLOR | PART NUMBER |



THIS DRAWING IS A CONTROLLED DOCUMENT.

| | | | | |
|----------|------|----|-----|-----|
| APPROVED | DATE | BY | CHK | APP |
| | | | | |

DATE: 11/11/11
 DRAWING NO: 350735
 CUSTOMER DRAWING

TE Connectivity
 PLUG, 12 CIRCUIT, UNIVERSAL MATE-N-LOK(TM)