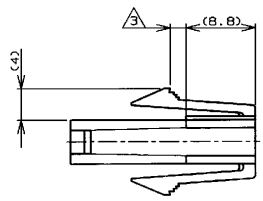
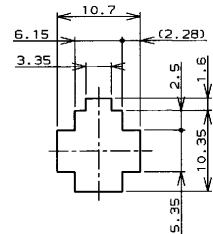
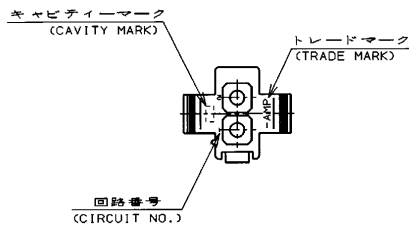
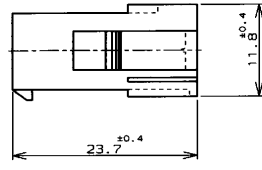
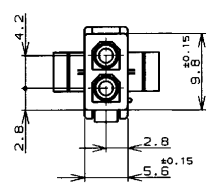


THIS DRAWING IS UNPUBLISHED. RELEASED FOR PUBLICATION .19 .  
 © COPYRIGHT 19 BY AMP INCORPORATED. ALL RIGHTS RESERVED.

REVISIONS						
P	LTR	DESCRIPTION	ECN	DATE	DWN	APVD
D		再作成 (REDRAWN)	FJ00-0871-98	8月 18	MM	MS
D1		REV PER ECO-10-000444		08JAN10	KK	AEG



寸法公差は±0.20 (TOLERANCE: ±0.20)  
 パネル取付穴 (RECOMMENDED PANEL OPENING DIMENSION)

- 注記;  
 1. 使用端子型番は170359, 170360, 170361, 170362  
 2. 嵌合相手ハウジング型番は172165  
 3. 適用パネル厚 0.8-2.0mm  
 4. 取付穴打抜方向とハウジングの挿入方向は同じとする。
- NOTE;  
 1. APPLICABLE CONT P/N: 170359, 170360, 170361, 170362  
 2. MATING HSG P/N: 172165  
 3. APPLICABLE PANEL THICKNESS: 0.8-2.0mm  
 4. HOUSING INSERTION INTO THE PANEL CUT-OUT MUST BE DONE IN THE SAME DIRECTION WITH PUNCH KNOCKING.  
 5. OBSOLETE PARTS: OBSOLETE CIS STREAMLINING PER D.RENAUD/D.SINISI

△ OBSOLETE

黒 (BLACK)	1-172157-9
青 (BLUE)	1- -6
緑 (GREEN)	1- -5
赤 (RED)	1- -2
自然色 (NATURAL)	172157-1
色 (COLOR)	型番 (P/N)
WIRE RANGE 配線電線断面積	INSULATION DIA 被覆外径

THIS DRAWING IS A CONTROLLED DOCUMENT FOR AMP INCORPORATED. IT IS SUBJECT TO CHANGE AND THE CONTROLLING ENGINEERING ORGANIZATION SHOULD BE CONTACTED FOR THE LATEST REVISION.		DWN 8月 18	日本エレクトロニクス株式会社 Kawasaki, Japan
DIMENSIONS 単位: mm		CHK 13月 08	
TOLERANCES UNLESS OTHERWISE SPECIFIED 一般公差 (GENERAL TOLERANCE)		APVD 13月 08	NAME 名称
±0.3		PRODUCT SPEC 製品規格	2極ミニユニバーサルメイトンロックキャップハウジング (UL94V-0)
MATERIAL 材料 66ナイロン UL94V-0 (GGNYLON UL94V-0)		INSTRUCTION SHEET 取付説明書	2Pos MINI UNIVERSAL MATE-N-LOCK CONN. CAP HOUSING (UL94V-0)
FINISH 仕上げ		WEIGHT	SIZE   CAGE CODE   DRAWING NO A3   00779   172157
CUSTOMER DRAWING			RESTRICTED TO
SCALE 2-1			SHEET 1 OF 1 REV D1