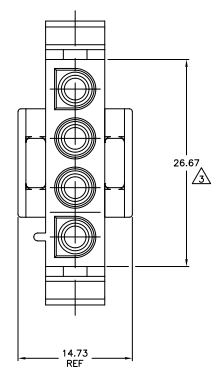
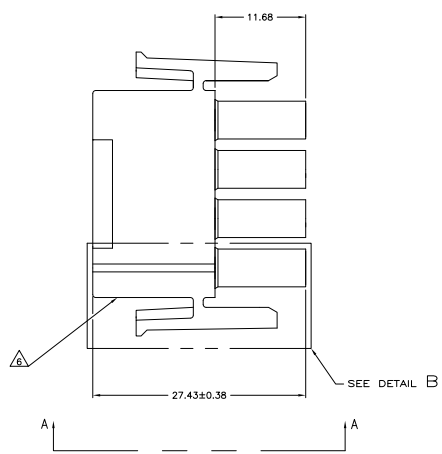
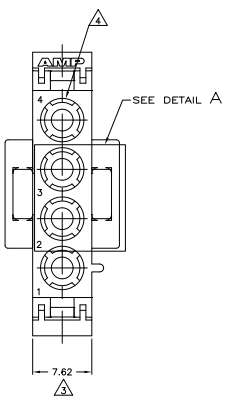
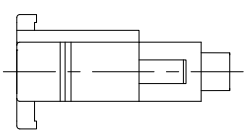


THIS DRAWING IS UNPUBLISHED  
 ALL RIGHTS RESERVED

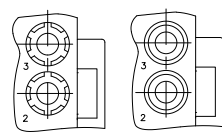
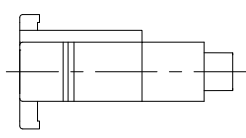
REV	DATE	DESCRIPTION	BY	CHK	APP
CM	53				
AB2		REVISED PER ECD-11-004587			



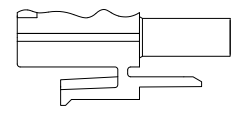
- MATES WITH APPROPRIATE UNIVERSAL MATE-N-LOK™ CAP OR HEADER.
  - SMALL NICKS ARE PERMITTED ON THE CIRCUIT TOWERS WHICH COULD INCREASE THE INITIAL HOUSING MATING FORCE BY UP TO 4.4 NEWTONS [1.0 LBS]. NO INDIVIDUAL NICKED TOWER SHALL INCREASE THIS FORCE BY OVER 2.2 NEWTONS [.5 LBS].
- ⚠ DIMENSION INDICATED IS AS MOLDED. ADDITIONAL GROWTH DUE TO SUBSEQUENT MOISTURE ABSORPTION MAY OCCUR.
  - ⚠ FOUR RIBS EQUALLY SPACED, NO SPECIFIC ORIENTATION, NO RIBS OR SIX RIBS EQUALLY SPACED, NO SPECIFIC ORIENTATION, OPTIONAL.
  - ⚠ NOT MANUFACTURED IN U.S.
  - ⚠ UNDERWRITERS RECOGNIZED COMPONENT LOGO AND CSA CERTIFICATION LOGO TO BE LOCATED ONCE EACH ON SIDE OF HOUSING.



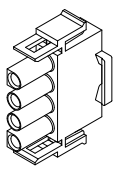
VIEW A-A  
 350779-4 ONLY



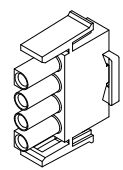
DETAIL A  
 OPTIONAL CONSTRUCTION



DETAIL B  
 350779-4 ONLY



350779-4 3-DIMENSIONAL MODEL  
 NTS



3-DIMENSIONAL MODEL  
 NTS

MM	IN
27.43	1.080
26.67	1.050
14.73	.580
11.68	.460
7.62	.300
0.38	.015
0.13	.005
MM	IN

CONVERSION TABLE  
 999 9999

COLOR	PART NO.
BLACK	1-350779-9
GRAY	1-350779-8
BLUE	1-350779-6
GREEN	1-350779-5
YELLOW	1-350779-4
ORANGE	1-350779-3
RED	1-350779-2
BROWN	1-350779-1
⚠	350779-4
NATURAL	350779-1

THIS DRAWING IS A CONTROLLED DOCUMENT.

TE Connectivity  
 PLUG, 4 CIRCUIT,  
 UNIVERSAL MATE-N-LOK™

SIZE: A1 DATE: 00779 Q=350779

METRIC