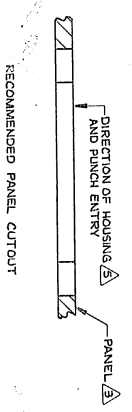
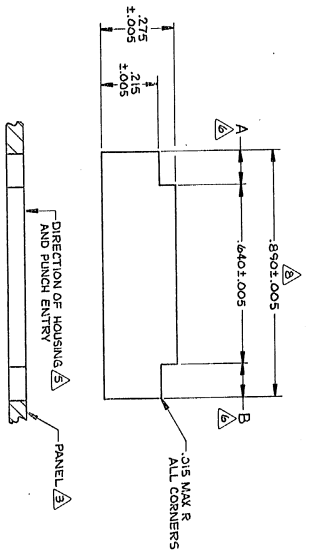
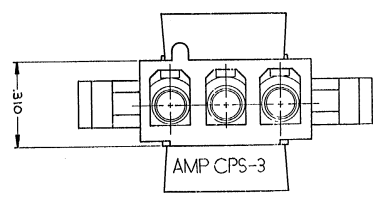
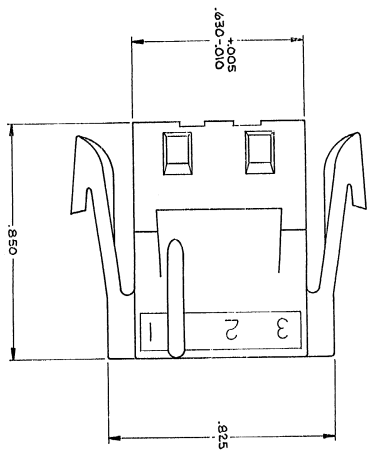
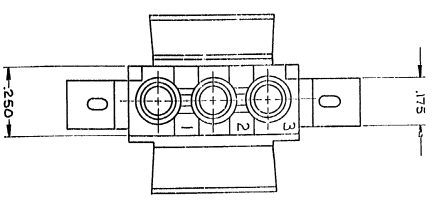


THIS DRAWING IS UNCLASSIFIED, RELEASED FOR PUBLIC DISTRIBUTION.
 ALL INFORMATION CONTAINED HEREIN IS UNCLASSIFIED EXCEPT WHERE SHOWN OTHERWISE.
 DATE 07-19-2011 BY 60322/UC/BAW/STP



REV	DATE	DESCRIPTION	BY	CHKD	APP'D
1	11-11-83	DESIGN
2	11-11-83
3	11-11-83
4	11-11-83
5	11-11-83
6	11-11-83
7	11-11-83
8	11-11-83
9	11-11-83
10	11-11-83

1. MATES WITH CAP PART NUMBER 480305.
 2. ACCEPTS MATE-N-LOK SOCKET CONTACTS.
 3. RECOMMENDED PANEL THICKNESS .025-.065.
 4. BOTH LOCKING LEGS TO BE SQUEEZED TOGETHER AND HOUSING TO BE INSERTED "STRAIGHT-IN" AS OPPOSED TO A ROCKING MANNER OF INSERTION.
 5. PANEL MUST BE PUNCHED SO THAT THE HOUSING ENTERS THE PANEL IN THE SAME DIRECTION AS THE PUNCH.
 6. DIMENSIONS A AND B TO BE EQUAL WITHIN .005.
 7. PANEL MUST NOT HAVE ANY MATERIAL (PAINT, PORCELAIN, ETC.) APPLIED IN THE MOUNTING HOLE AREA THAT WOULD DECREASE RETENTION OF THE HOUSING IN THE PANEL.
- IF NOTES 5 AND/OR 7 ARE NOT COMPLIED WITH, THE 850 DIMENSION SHOULD BE REDUCED TO THE DIMENSION OF THE HOUSING RETENTION IN THE PANEL.

CONTRACT NO.	530-816
DATE	6-3-86
BY	...
CHKD	...
APP'D	...
OTHER PART NO.	
SIZE	D
SCALE	5:1
PART NO.	480304
DATE	...
BY	...
CHKD	...
APP'D	...

CUSTOMER DRAWING