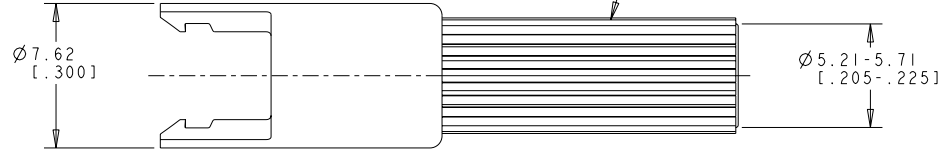
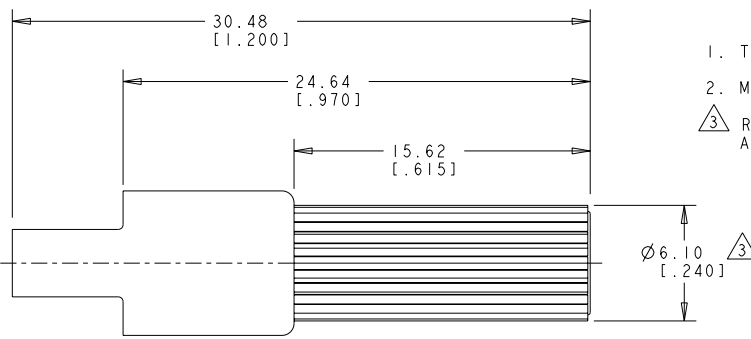
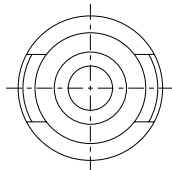


THIS DRAWING IS UNPUBLISHED. RELEASED FOR PUBLICATION
 © COPYRIGHT 20 BY TYCO ELECTRONICS CORPORATION, ALL RIGHTS RESERVED.

LOC CM DIST 00

REVISIONS					
P	LTR	DESCRIPTION	DATE	DWN	APVD
L		REVISED PER OG3B-0652-03	09-OCT-03	SH	DC
M		REVISED PER ECO-05-012615	27JAN06	KW	DC

- TO BE USED WITH MATE-N-LOK™ PINS
 - MATES WITH PLUG 480349.
- △3 RIBS ARE OPTIONAL CONSTRUCTION AND MAY NOT APPEAR ON PART.



RED	1-480350-2
NATURAL	1-480350-0
COLOR	PART NUMBER



THIS DRAWING IS A CONTROLLED DOCUMENT FOR TYCO ELECTRONICS CORPORATION. IT IS SUBJECT TO CHANGE AND THE CONTROLLING AUTHENTICATING ORGANIZATION SHOULD BE CONTACTED FOR THE LATEST REVISION.

DIMENSIONS: mm [INCHES]	TOLERANCES UNLESS OTHERWISE SPECIFIED: 0 PLC ± 1 PLC ± 2 PLC ±0.13 [0.005] 3 PLC ± 4 PLC ± ANGLES ± FINISH	DWN 22-MAR-2002 K. WHITAKER CHK 22-MAR-2002 D. COLEY APVD 22-MAR-2002 D. COLEY PRODUCT SPEC	NAME CAP, SINGLE CIRCUIT, COMMERCIAL MATE-N-LOK(TM)
MATERIAL NYLON, 94V-2	APPLICATION SPEC	WEIGHT	RESTRICTED TO
CUSTOMER DRAWING		SIZE A3 CAGE CODE 00779 DRAWING NO. C=480350	SCALE 5:1 SHEET 1 OF 1 REV M

Tyco Electronics
Harrisburg, PA 17105-3608