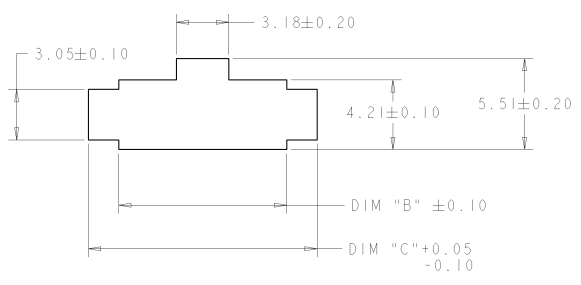
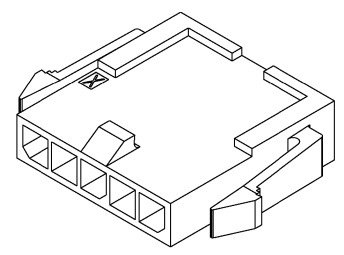
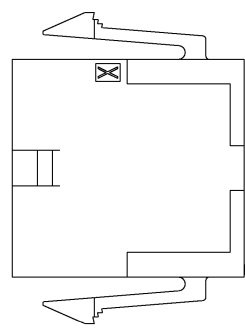


THIS DRAWING IS UNPUBLISHED. RELEASED FOR PUBLICATION BY TYCO ELECTRONICS CORPORATION. ALL RIGHTS RESERVED.

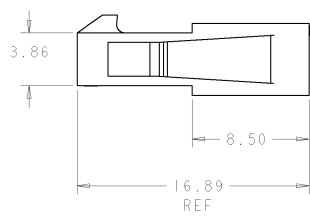
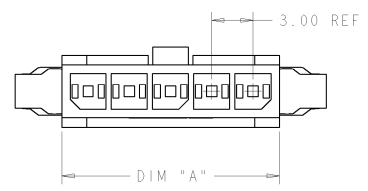
REV. NO.		REVISIONS		DATE	BY	CHKD
DATE	DESCRIPTION	DATE	BY	CHKD	APPROV	REVISIONS
0	RELEASED PER 063B-0331-01	11-DEC-91	BJ	CJ		



PANEL CUT-OUT  $\triangle$



SCALE 5:1



40.88	37.20	36.85	12	1-1445048-2
37.88	34.20	33.85	11	1-1445048-1
34.88	31.20	30.85	10	1-1445048-0
31.88	28.20	27.85	9	1445048-9
28.88	25.20	24.85	8	1445048-8
25.88	22.20	21.85	7	1445048-7
22.88	19.20	18.85	6	1445048-6
19.88	16.20	15.85	5	1445048-5
16.88	13.20	12.85	4	1445048-4
13.88	10.20	9.85	3	1445048-3
10.88	7.20	6.85	2	1445048-2
DIM C	DIM B	DIM A	NO. OF POS.	PART NUMBER

$\triangle$  RECOMMENDED PANEL THICKNESS 1.57-2.3.

2. PANEL MUST BE PUNCHED SO THAT HOUSING ENTERS THE PANEL IN THE SAME DIRECTION AS THE PUNCH.



DIMENSIONS: mm DIMENSIONS: INCHES (1:16)		DWG: 29AUG2000 CBY: W DAVIS APPR: W DAVIS	Tyco Electronics Harrisburg, PA 17105-3600
MATERIAL: NYLON, UL94V-0 BLACK		FINISH: - WEIGHT: - CUSTOMER DRAWING	<b>AMP</b> PLUG HOUSING, 2 TO 12 POSITION SINGLE ROW, PANEL MOUNT MICRO MATE-N-LOCK™ SIZE: CASE CODE DRAWING NO: A2100779 C=1445048 SCALE: 6:1 SHEET 1 OF 1 REV 0