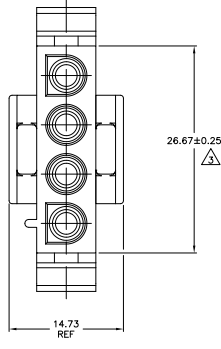
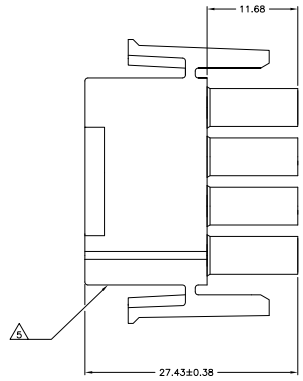
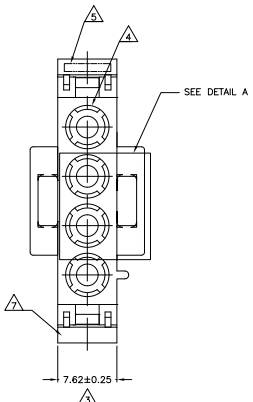
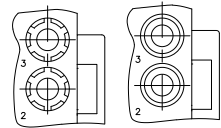
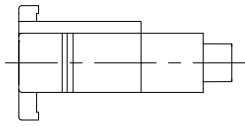


THIS DRAWING IS UNPUBLISHED  
 ALL RIGHTS RESERVED

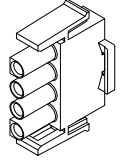
REV	DATE	DESCRIPTION	BY	CHK	APP
0					
1		REVISED PER EDD-11-004587	11MMR11	RK	HMR



- NOTES:
- MATES WITH APPROPRIATE UNIVERSAL MATE-N-LOK™ CAP OR HEADER.
  - SMALL NICKS ARE PERMITTED ON THE CIRCUIT TOWERS WHICH COULD INCREASE THE INITIAL HOUSING MATING FORCE BY UP TO 4.4 NEWTONS [1.0 LBS]. NO INDIVIDUAL NICKED TOWER SHALL INCREASE THIS FORCE BY OVER 2.2 NEWTONS [.5 LBS].
- △ DIMENSION INDICATED IS AS MOLDED. ADDITIONAL GROWTH DUE TO SUBSEQUENT MOISTURE ABSORPTION MAY OCCUR.
  - △ FOUR RIBS EQUALLY SPACED. NO SPECIFIC ORIENTATION, NO RIBS OR SIX RIBS EQUALLY SPACED. NO SPECIFIC ORIENTATION, OPTIONAL.
  - △ UNDERWRITERS RECOGNIZED COMPONENT LOGO AND CSA CERTIFICATION LOGO TO BE LOCATED ONCE EACH ON SIDE OF HOUSING.
  - △ TRADEMARK LOCATION (AMP OR TE CONNECTIVITY).
  - △ MANUFACTURING LOCATION ID (OPTIONAL).
  - △ OBSOLETE PARTS: OBSOLETE CIS STREAMLINING PER D.RENAUD/D.SINISI



DETAIL A  
 OPTIONAL CONSTRUCTION



3-DIMENSIONAL MODEL  
 NTS

MM	IN
27.43	1.080
26.67	1.050
14.73	.580
11.68	.460
7.62	.300
0.38	.015
0.25	.010
0.13	.005

△ OBSOLETE	BLACK	1-480702-9
	GRAY	1-480702-8
	BLUE	1-480702-6
	GREEN	1-480702-5
△ SUPERSEDED BY 1-480700-0	YELLOW	1-480702-4
△ OBSOLETE	ORANGE	1-480702-3
	RED	1-480702-2
	BROWN	1-480702-1
	NATURAL	1-480702-0
	COLOR	PART NUMBER

THIS DRAWING IS A CONTROLLED DOCUMENT.

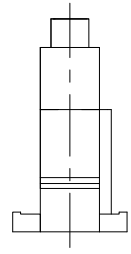
UNLESS OTHERWISE SPECIFIED:	UNLESS OTHERWISE SPECIFIED:	UNLESS OTHERWISE SPECIFIED:	UNLESS OTHERWISE SPECIFIED:
DRAWING: METRIC	UNIT: MM	SCALE: 1:1	DATE: 11/07/99
DESIGNER: [ ]	CHECKED: [ ]	APPROVED: [ ]	DATE: 11/07/99
REVISED: [ ]	REVISED: [ ]	REVISED: [ ]	REVISED: [ ]

TE Connectivity  
 PLUG, 4 CIRCUIT, UNIVERSAL MATE-N-LOK(TM)  
 PART NUMBER: 1-480702  
 CUSTOMER DRAWING: [ ]

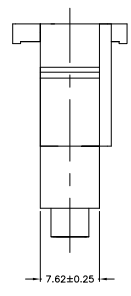
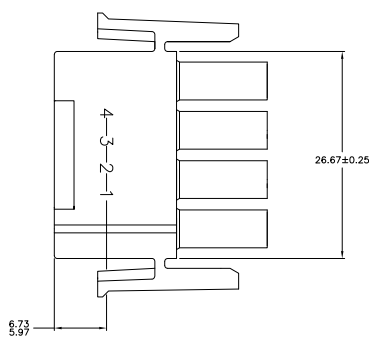
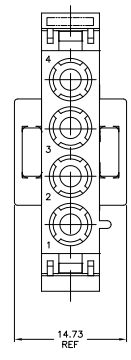
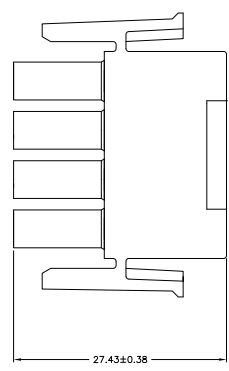


THIS DRAWING IS UNPUBLISHED  
 ALL RIGHTS RESERVED

REV	DATE	DESCRIPTION	BY	APP
0		SEE SHEET 1		



- NOTES:
1. STAMP NUMBERS 3.18 HIGH AT WIRE END OF HOUSING (12 POINT DAVID TYPE).
  2. CHARACTERS TO BE POSITIONED ON HOUSING TO BE READ FROM WIRE END ONLY.
  3. VIOLET, BLACK, BROWN AND BLUE COLORED BLOCKS TO BE STAMPED WITH WHITE CHARACTERS. ALL OTHER COLORED BLOCKS TO BE STAMPED WITH BLACK CHARACTERS.



6.73	.265	-	-
5.97	.235	-	-
3.18	.125	27.43	1.080
0.38	.015	26.67	1.050
0.25	.010	14.73	.580
0.13	.005	7.62	.300
MM	IN	MM	IN

CONVERSION TABLE

**METRIC**

THIS DRAWING IS A CONTROLLED DOCUMENT.		REV	DATE	DESCRIPTION	BY	APP	
UNLESS OTHERWISE SPECIFIED:		UNIT	MILLIMETERS	TOLERANCES UNLESS OTHERWISE SPECIFIED:			
FINISH	AS SHOWN	THREADS	PER ANSI B1.13-2	PLUG, 4 CIRCUIT, UNIVERSAL MATE-IN-LOCK(TM)			
WELDING	AS SHOWN	WELDING	PER AWS A5.1	SEE CUSTOMER DRAWING	DATE	10/07/79	
DRIVING	AS SHOWN	DRIVING	PER ANSI B1.13-2	UNIVERSAL MATE-IN-LOCK(TM)	DRAWING NO.	480702	
COLOR	NATURAL	COLOR	2-480702-0	TE Connectivity	REVISIONS	1	
					DATE	4.1	
					SHEET	2	
					TOTAL	2	
					APP	AP2	