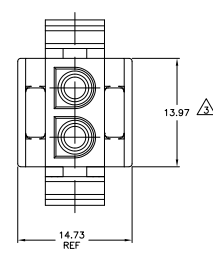
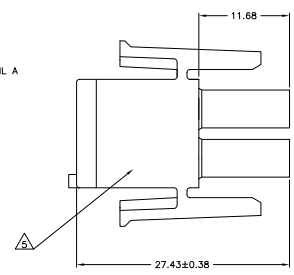
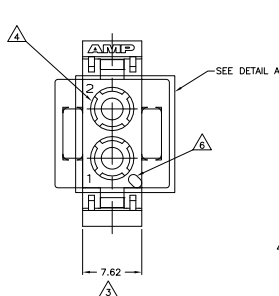
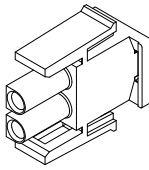


THIS DRAWING IS UNPUBLISHED
NOTED FOR INFORMATION
ALL RIGHTS RESERVED

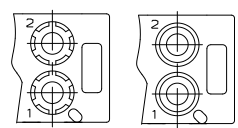
REV	DATE	DESCRIPTION	BY	CHK	APP
CM	00				
AG		REVISED PER ECO-11-004587	11MMR11	RK	HMR



1. MATES WITH APPROPRIATE UNIVERSAL MATE-N-LOK™ CAP OR HEADER.
 2. SMALL NICKS ARE PERMITTED ON THE CIRCUIT TOWERS WHICH COULD INCREASE THE INITIAL HOUSING MATING FORCE BY UP TO 4.4 NEWTONS [1.0 LBS]. NO INDIVIDUAL NICKED TOWER SHALL INCREASE THIS FORCE BY OVER 2.2 NEWTONS [.5 LBS].
- △3 DIMENSION INDICATED IS AS MOLDED. ADDITIONAL GROWTH DUE TO SUBSEQUENT MOISTURE ABSORPTION MAY OCCUR.
- △4 FOUR RIBS EQUALLY SPACED, NO SPECIFIC ORIENTATION. NO RIBS OR SIX RIBS EQUALLY SPACED, NO SPECIFIC ORIENTATION, OPTIONAL.
- △ UNDERWRITERS RECOGNIZED COMPONENT LOGO AND CSA CERTIFICATION LOGO TO BE LOCATED ONCE ON ANY SIDE OF HOUSING.
- △6 POSITION #1 LOCATOR FEATURE MAY BE ROUND OR OBLONG (AS DEPICTED).
- △ OBSOLETE PARTS: OBSOLETE CIS STREAMLINING PER D.RENAUD/D.SINISI



3-DIMENSIONAL MODEL
NTS



DETAIL A
OPTIONAL CONSTRUCTION

27.43	1.080
14.73	.580
13.97	.550
11.68	.460
7.62	.300
0.38	.015
0.13	.005
MM	IN

CONVERSION TABLE
REV 01/10

METRIC

BLACK	1-480698-9
GRAY	1-480698-8
BLUE	1-480698-6
GREEN	1-480698-5
YELLOW	1-480698-4
ORANGE	1-480698-3
RED	1-480698-2
BROWN	1-480698-1
NATURAL	1-480698-0
COLOR	PART NUMBER

△ OBSOLETE

△ OBSOLETE

THIS DRAWING IS A CONTROLLED DOCUMENT.

DATE	01/10	BY	11MMR11	CHK	RK	APP	HMR
DATE	01/10	BY	11MMR11	CHK	RK	APP	HMR
DATE	01/10	BY	11MMR11	CHK	RK	APP	HMR

UNIVERSAL MATE-N-LOK™

TE Connectivity

PLUG, 2 CIRCUIT, UNIVERSAL MATE-N-LOK™ (TM)

SIZE DATE SIZE DRAWING NO. 100779 G-480698

CUSTOMER DRAWING

SIZE 4:1

1 1 AH2