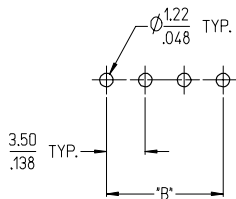
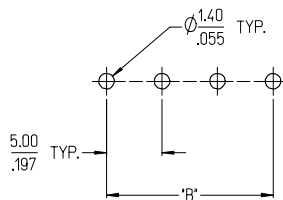


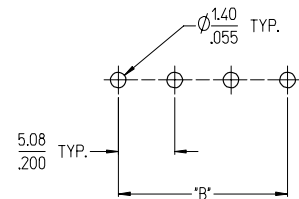
3950X SERIES
3.50mm HEADERS



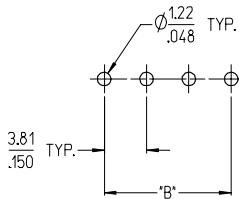
3952X & 3954X SERIES
5.00mm HEADERS
5.00mm 10 AMP FIXED



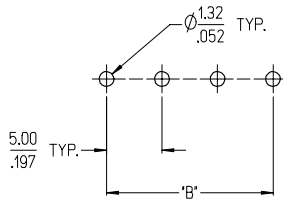
3953X SERIES
5.08mm HEADERS



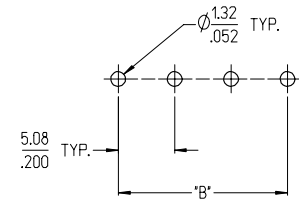
3951X SERIES
3.81mm HEADERS



3954X SERIES
5.00mm 15 AMP FIXED



3954X SERIES
5.08mm 15 AMP FIXED



NOTES:

- REFER TO INDIVIDUAL PRODUCT SALES DRAWINGS FOR 'B' DIMENSION.
- DOES NOT APPLY TO DUAL LEVEL HEADERS, SERIES 39528 AND 39538.
- TYP. = TYPICAL.

INITIAL RELEASE	2006/10/02
EC NO: ETC2007-0096	
DRAWN BY: C. YORK	2006/10/04
CHECKED BY: J. MACNEIL	2006/10/04
APPROVED BY: J. MACNEIL	2006/10/04
REV	DESCRIPTION
A	

QUALITY SYMBOLS
▽=0
▽=0

GENERAL TOLERANCES (UNLESS SPECIFIED)

	mm	INCH
4 PLACES	± .---	± .---
3 PLACES	± .---	± .005
2 PLACES	± 0.13	± .01
1 PLACE	± 0.3	± .---
ANGULAR ± 2 °		

DRAFT WHERE APPLICABLE MUST REMAIN WITHIN DIMENSIONS

DIMENSION STYLE

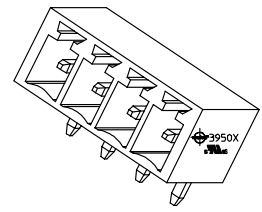
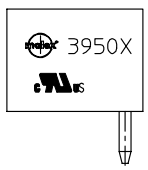
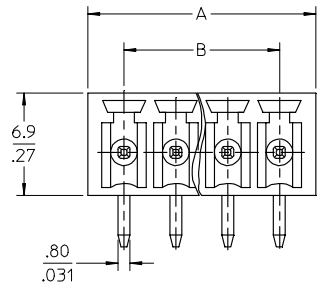
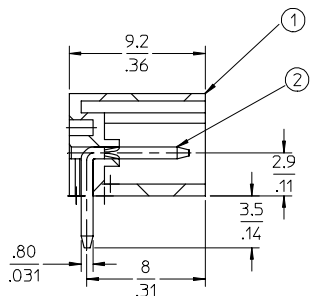
MM/IN	
DRAWN BY: C. YORK	DATE: 2006/08/25
CHECKED BY: J. MACNEIL	DATE: 2006/08/25
APPROVED BY: J. MACNEIL	DATE: 2006/08/25
MATERIAL NO.:	--

SCALE: 3:1	DESIGN UNITS: INCH	THIRD ANGLE PROJECTION
------------	--------------------	------------------------

TITLE: RECOMMENDED PCB LAYOUT FOR ESE TERMINAL BLOCKS

MOLEX INCORPORATED

DOCUMENT NO. SD-39501-002	SHEET NO. 1 OF 1
---------------------------	------------------



- SPECIFICATIONS:**
- Material:
 - Body: PA66
 - Terminal: Brass
 - Wire range: N/A
 - Electrical rating: 300V, 8A.
 - Max Torque: N/A.
 - Wire strip length: N/A.
 - Operating temperature: -40C to +105C.
 - $A = (N \times P) + 1.39MM$
 - $B = (N - 1) \times P$
 - P (PITCH) = 3.5MM (.138").
 - N = Number of positions available 2 through 20.

ENTER DESCRIPTION EC NO: NEO2006-0310 DRAWN BY: ROTHHAUS CHECKED BY: C. YORK APPR: JFAMILLEK 2006/01/09 2006/01/09 2006/01/10	QUALITY SYMBOLS	GENERAL TOLERANCES (UNLESS SPECIFIED)		DIMENSION STYLE		SCALE	DESIGN UNITS	THIRD ANGLE PROJECTION
	$\nabla=0$ $\sphericalangle=0$	mm	INCH	MM/IN		4:1	INCH	
		4 PLACES ± --- ±.0015		DRAWN BY	DATE	TITLE		
		3 PLACES ±0.038 ±.005		ROTHHAUS	12/06/05	3.5MM, EURO HEADER RIGHT ANGLE, CLOSED END		
	2 PLACES ±0.13 ±.01		CHECKED BY	DATE				
	1 PLACE ±0.3 ±---		C. YORK	01/06/06				
			APPROVED BY	DATE				
			ANGULAR ± 2 °					
		DRAFT WHERE APPLICABLE MUST REMAIN WITHIN DIMENSIONS		MATERIAL NO.	DOCUMENT NO.	SHEET NO.		
				SEE CHART	SD-39502-001	1 OF 1		
		THIS DRAWING CONTAINS INFORMATION THAT IS PROPRIETARY TO MOLEX INCORPORATED AND SHOULD NOT BE USED WITHOUT WRITTEN PERMISSION						

10 9 8 7 6 5 4 3 2 1

Description	Circuit size	Material Numbers												Dimensional Information			
		Black						Green						Dim. A		Dim B	
		100% Tin			30 u' Gold			100% Tin			30 u' Gold						
		Printing Options			Printing Options			Printing Options			Printing Options						
None	10A	11A	None	10A	11A	None	10A	11A	None	10A	11A	mm	inch	mm	inch		
3.5mm Euro Header, Right Angle	2	39502102	395021102	395021202	395021502	395021602	395021702	395028002	395028102	395028202	395028502	395028602	395028702	8.40	0.331	3.50	0.138
3.5mm Euro Header, Right Angle	3	395021003	395021103	395021203	395021503	395021603	395021703	395028003	395028103	395028203	395028503	395028603	395028703	11.90	0.469	7.00	0.276
3.5mm Euro Header, Right Angle	4	395021004	395021104	395021204	395021504	395021604	395021704	395028004	395028104	395028204	395028504	395028604	395028704	15.40	0.606	10.50	0.413
3.5mm Euro Header, Right Angle	5	395021005	395021105	395021205	395021505	395021605	395021705	395028005	395028105	395028205	395028505	395028605	395028705	18.90	0.744	14.00	0.551
3.5mm Euro Header, Right Angle	6	395021006	395021106	395021206	395021506	395021606	395021706	395028006	395028106	395028206	395028506	395028606	395028706	22.40	0.882	17.50	0.689
3.5mm Euro Header, Right Angle	7	395021007	395021107	395021207	395021507	395021607	395021707	395028007	395028107	395028207	395028507	395028607	395028707	25.90	1.020	21.00	0.827
3.5mm Euro Header, Right Angle	8	395021008	395021108	395021208	395021508	395021608	395021708	395028008	395028108	395028208	395028508	395028608	395028708	29.40	1.157	24.50	0.965
3.5mm Euro Header, Right Angle	9	395021009	395021109	395021209	395021509	395021609	395021709	395028009	395028109	395028209	395028509	395028609	395028709	32.90	1.295	28.00	1.102
3.5mm Euro Header, Right Angle	10	395021010	395021110	395021210	395021510	395021610	395021710	395028010	395028110	395028210	395028510	395028610	395028710	36.40	1.433	31.50	1.240
3.5mm Euro Header, Right Angle	11	395021011	395021111	395021211	395021511	395021611	395021711	395028011	395028111	395028211	395028511	395028611	395028711	39.90	1.571	35.00	1.378
3.5mm Euro Header, Right Angle	12	395021012	395021112	395021212	395021512	395021612	395021712	395028012	395028112	395028212	395028512	395028612	395028712	43.40	1.709	38.50	1.516
3.5mm Euro Header, Right Angle	13	395021013	395021113	395021213	395021513	395021613	395021713	395028013	395028113	395028213	395028513	395028613	395028713	46.90	1.846	42.00	1.654
3.5mm Euro Header, Right Angle	14	395021014	395021114	395021214	395021514	395021614	395021714	395028014	395028114	395028214	395028514	395028614	395028714	50.40	1.984	45.50	1.791
3.5mm Euro Header, Right Angle	15	395021015	395021115	395021215	395021515	395021615	395021715	395028015	395028115	395028215	395028515	395028615	395028715	53.90	2.122	49.00	1.929
3.5mm Euro Header, Right Angle	16	395021016	395021116	395021216	395021516	395021616	395021716	395028016	395028116	395028216	395028516	395028616	395028716	57.40	2.260	52.50	2.067
3.5mm Euro Header, Right Angle	17	395021017	395021117	395021217	395021517	395021617	395021717	395028017	395028117	395028217	395028517	395028617	395028717	60.90	2.398	56.00	2.205
3.5mm Euro Header, Right Angle	18	395021018	395021118	395021218	395021518	395021618	395021718	395028018	395028118	395028218	395028518	395028618	395028718	64.40	2.536	59.50	2.343
3.5mm Euro Header, Right Angle	19	395021019	395021119	395021219	395021519	395021619	395021719	395028019	395028119	395028219	395028519	395028619	395028719	67.90	2.673	63.00	2.480
3.5mm Euro Header, Right Angle	20	395021020	395021120	395021220	395021520	395021620	395021720	395028020	395028120	395028220	395028520	395028620	395028720	71.40	2.811	66.50	2.618

SEE SHEET 1 EC NO: NEO2006-0310 DRAWN: ROTHHAUS CHECK: YORK APPR: J.PAMILLER 2006/01/09 2006/01/09 2006/01/10	QUALITY SYMBOLS = 0 = 0	GENERAL TOLERANCES (UNLESS SPECIFIED) <table border="1"> <tr><th></th><th>mm</th><th>INCH</th></tr> <tr><td>4 PLACES</td><td>± 0.38</td><td>± .0015</td></tr> <tr><td>3 PLACES</td><td>± 0.38</td><td>± .005</td></tr> <tr><td>2 PLACES</td><td>± 0.13</td><td>± .01</td></tr> <tr><td>1 PLACE</td><td>± 0.3</td><td>± .01</td></tr> </table>		mm	INCH	4 PLACES	± 0.38	± .0015	3 PLACES	± 0.38	± .005	2 PLACES	± 0.13	± .01	1 PLACE	± 0.3	± .01	DIMENSION STYLE MM/IN	SCALE 4:1	DESIGN UNITS INCH	THIRD ANGLE PROJECTION
		mm	INCH																		
	4 PLACES	± 0.38	± .0015																		
	3 PLACES	± 0.38	± .005																		
2 PLACES	± 0.13	± .01																			
1 PLACE	± 0.3	± .01																			
DRAWN BY ROTHHAUS DATE 12/6/05	CHECKED BY C. YORK DATE 01/06/06	APPROVED BY DATE	TITLE 3.5MM, EURO HEADER RIGHT ANGLE, CLOSED END	MOLEX INCORPORATED																	
MATERIAL NO. SEE CHART	DOCUMENT NO. SD-39502-001	SHEET NO. 2 OF 2	DRAFT WHERE APPLICABLE MUST REMAIN WITHIN DIMENSIONS																		
THIS DRAWING CONTAINS INFORMATION THAT IS PROPRIETARY TO MOLEX INCORPORATED AND SHOULD NOT BE USED WITHOUT WRITTEN PERMISSION																					

9 8 7 6 5 4 3 2 1