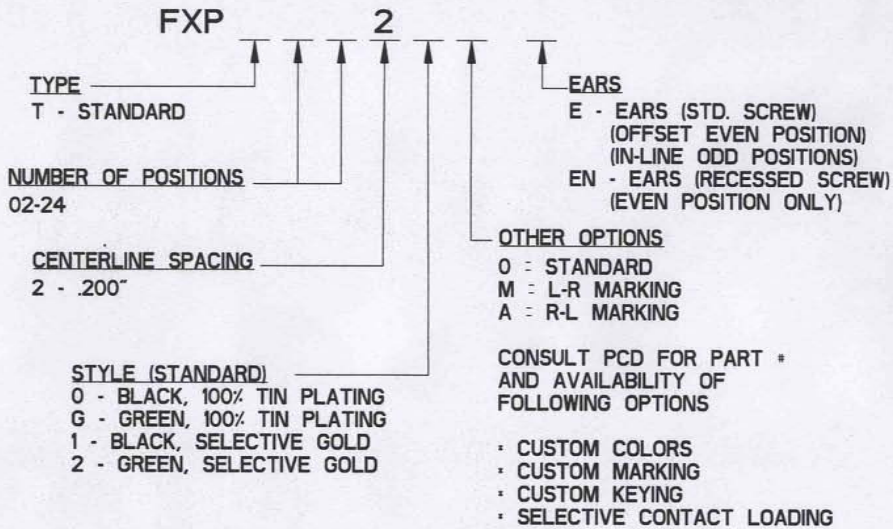


REV	ECN	APP'D
-	3750	JEC 5/3/99
A	3893	JEC 1/6/00
B	3677	
C	6031	PJC 3-06-07
D	6138	PJC 10-22-07
E	6188	PJC 2-26-08

## FXP SERIES PART NUMBERING SCHEME



# POS	DIM "A"
2	.40
3	.60
4	.80
5	1.00
6	1.20
7	1.40
8	1.60
9	1.80
10	2.00
11	2.20
12	2.40
13	2.60
14	2.80
15	3.00
16	3.20
17	3.40
18	3.60
19	3.80
20	4.00
21	4.20
22	4.40
23	4.60
24	4.80

**INSTALLATION RECOMMENDATIONS**  
 WIRE RANGE: AWG #12-26, STRANDED  
 WIRE STRIP LENGTH: .310"  
 TIGHTENING TORQUE: 10 IN-LB

**MATERIALS:**  
 HOUSING: PPO, UL 94 V-0  
 CONTACT: COPPER ALLOY  
 SCREW: STEEL, NICKEL FINISH  
 MAX OPERATING TEMPERATURE:  
 105°C

**RU**  
RATINGS

CURRENT - 15A  
VOLTAGE - 300V  
U.L. FILE NO. E83421

---

**SP**  
RATINGS

CURRENT - 15A  
VOLTAGE - 300V  
CSA FILE NO. LR69703

---

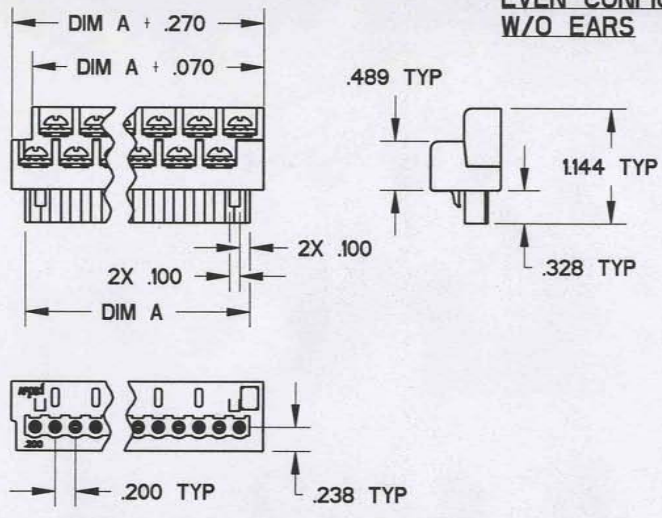
DIN VDE 0627:1986  
DIN VDE 0110-1:1989  
EN 60947-1:1991  
EN 60947-7-1:1992

CURRENT - PENDING  
VOLTAGE - PENDING  
TUV FILE NO. PENDING

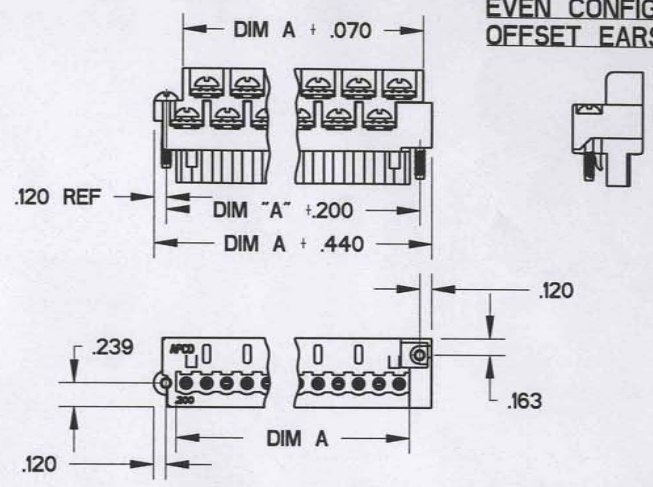
<b>DIMENSIONS</b> ANSI Y14.5M UNITS: INCHES Pro/E FILE	<b>TOLERANCES</b> .XX ±0.02 .XXX ±0.010 ANGLES ±0.5°	<b>PROJECTION</b> 	<b>AMPHENOL PCD</b> SPECIFICATION DRAWING <i>ENGR</i> D. MANTER 03-May-99	<b>TITLE</b>  <b>FXP SERIES PLUG ASSEMBLY</b>		
<b>ORIGINAL</b>	THIS DOCUMENT CONTAINS PROPRIETARY INFORMATION WHICH IS THE CONFIDENTIAL PROPERTY OF AMPHENOL PCD PEABODY, MA, USA	<i>CHKD</i> A. PATRIE 03-May-99	<i>SIZE</i> <b>A</b>	<i>DWG NO.</i> <b>FXPTXX200</b>	<i>REV</i> <b>E</b>	
		<i>APPD</i> J. CAHALY 03-May-99	CODE: 58982	SCALE: NONE	SHEET 1 OF 3	

REV	ECN	APP'D
-----	-----	-------

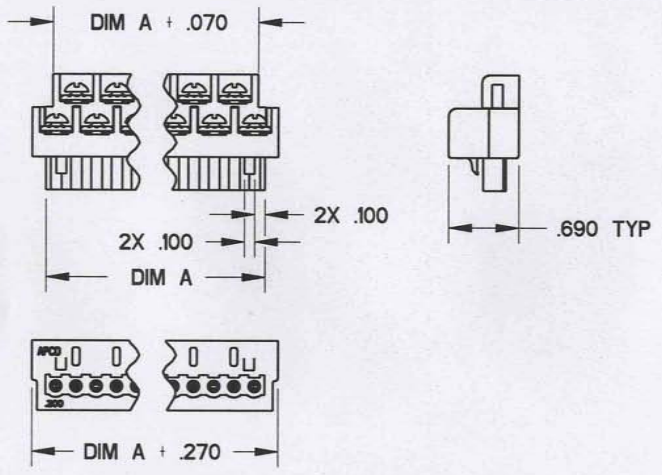
**EVEN CONFIG W/O EARS**



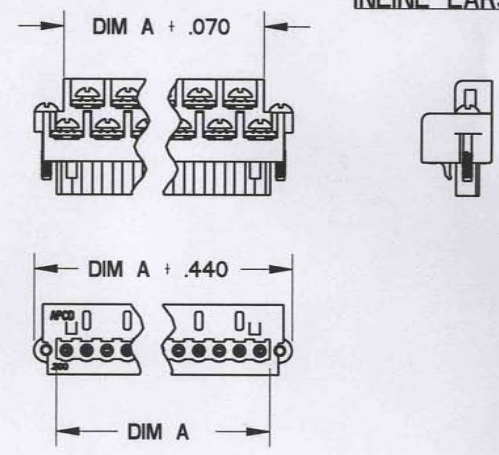
**EVEN CONFIG W/ OFFSET EARS**



**ODD CONFIG W/O EARS**



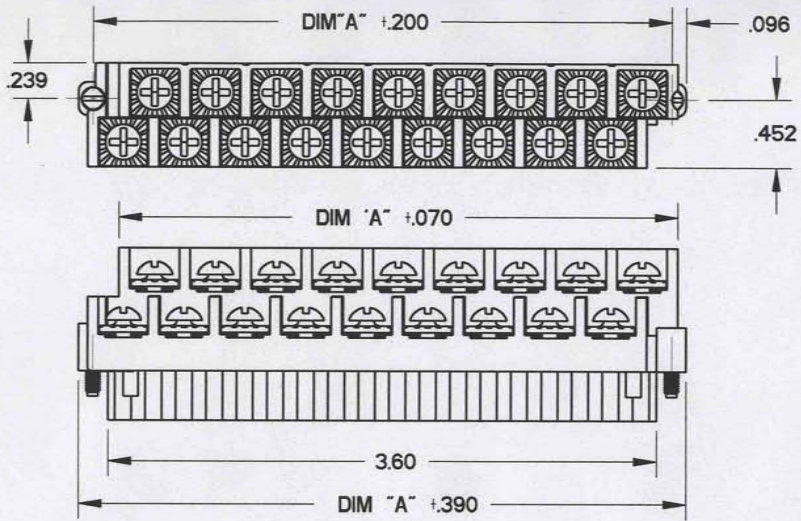
**ODD CONFIG W/ INLINE EARS**



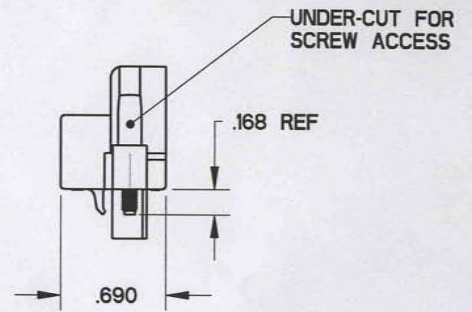
DIM A = NUM OF POS X CL SPACING

SIZE <b>A</b>	DWG NO. <b>FXPTXX200</b>	REV <b>E</b>
CODE: 58982	SCALE: NONE	SHEET 2 OF 3

REV	ECN	APP'D
-----	-----	-------



**EVEN CONFIG W/ IN-LINE EARS  
& RECESSED MOUNTING SCREW**



SIZE	DWG NO.	REV
A	FXPTXX200	E
CODE: 58982	SCALE: NONE	SHEET 3 OF 3