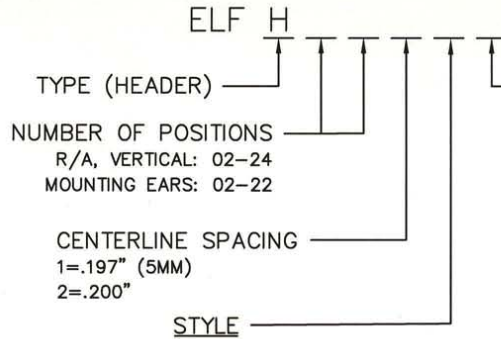


ELFH SERIES PART NUMBERING SCHEME

| REV | ECN | APPD |
|-----|------|--------------------|
| A | 3730 | JEC 4/12/99 |
| B | 3865 | JEC 11/9/99 |
| C | 3899 | JEC 1/4/00 |
| D | 4295 | IQ 2/7/01 |
| E | 4711 | IQ 1/8/02 |
| F | 4821 | IQ 4/4/02 |
| G | 5071 | IQ 12/04/02 |
| H | 5178 | IQ 3/20/03 |
| I | 5742 | <i>DN 12/18/05</i> |



OPTIONS

COLOR/PLATING
 0=BLACK, TIN (STANDARD)
 1=BLACK, SELECTIVE GOLD
 G=GREEN, TIN
 1G=GREEN, SEL. GOLD

MOUNTING EARS

0E= FLUSH MOUNT BLACK, TIN
 1E= FLUSH MOUNT BLACK, SEL. GOLD
 GE= FLUSH MOUNT GREEN, TIN
 EG= FLUSH MOUNT GREEN, SEL. GOLD

CONSULT PCD FOR PART NO. AND AVAILABILITY OF FOLLOWING OPTIONS:

- CUSTOM COLORS
- CUSTOM MARKING
- CUSTOM KEYING
- SELECTIVE CONTACT LOADING

RU RATINGS
 CURRENT - 15A
 VOLTAGE - 300V
 U.L. FILE NO. E83421

SP RATINGS
 CURRENT - 15A
 VOLTAGE - 300V
 CSA FILE NO. LR69703

RIGHT ANGLE
 1=CLOSED ENDS
 2=OPEN ENDS
 3=CLOSED ENDS;
 HIGH TEMP. *
 4=OPEN ENDS;
 HIGH TEMP. *

VERTICAL
 5=CLOSED ENDS
 6=OPEN ENDS
 8=CLOSED ENDS;
 HIGH TEMP. *
 9=OPEN ENDS;
 HIGH TEMP. *

* HIGH TEMP. MATERIAL WILL WITHSTAND COMPONENT EQUILIBRIUM TEMPERATURES OF 260°C FOR 3 MINUTES DURING THE SOLDERING PROCESS

OPERATING TEMPERATURE RANGE:
 -40°C - 105°C

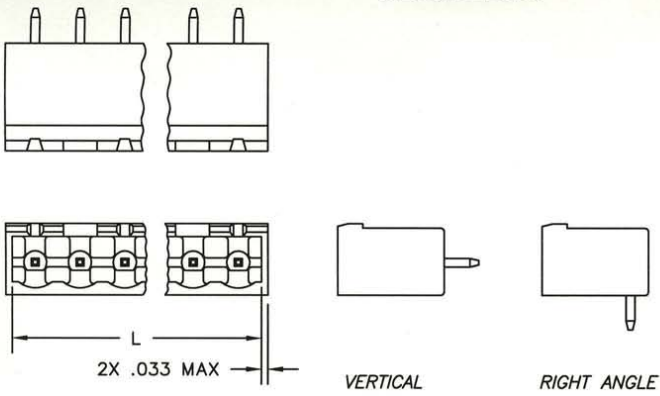
MATERIALS:
 HOUSING: PBT, UL 94 V-0; STANDARD TEMP.
 *NYLON 46, UL 94 V-0; HIGH TEMP.
 CONTACT: BRASS
 PLATING: TIN, 200 MICROINCH
 GOLD, 30 MICROINCH

DIN VDE 0627:1986
 DIN VDE 0110-1:1989
 EN 60947-1:1991
 EN 60947-7-1:1992

CURRENT - 15A
 VOLTAGE - 300 V
 TUV FILE NO. 20396

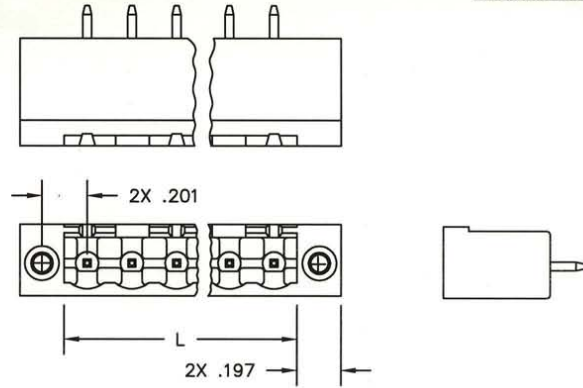
| | | | | | | |
|--|---|-----------------------|--|---------------------------|--|--------------|
| DIMENSIONS ANSI Y14.5M UNITS: INCHES ACAD FILE | TOLERANCES .XX ±.01 .XXX ±.005 ANGLES ±2° | PROJECTION | Amphenol Pcd SPECIFICATION DRAWING | | TITLE ELFH SERIES HEADER ASSEMBLY | |
| | | | ENGR J. WILKINSON 11/8/98 | CHKD A. PATRIE 12/4/98 | | SIZE A |
| ORIGINAL STAMPED IN RED | THIS DOCUMENT CONTAINS PROPRIETARY INFORMATION WHICH IS THE CONFIDENTIAL PROPERTY OF AMPHENOL PCD INC. PEABODY, MA | | APPD J. CAHALY 12/11/98 | CODE: 58982 | SCALE: NONE | SHEET 1 OF 2 |

CLOSED ENDS



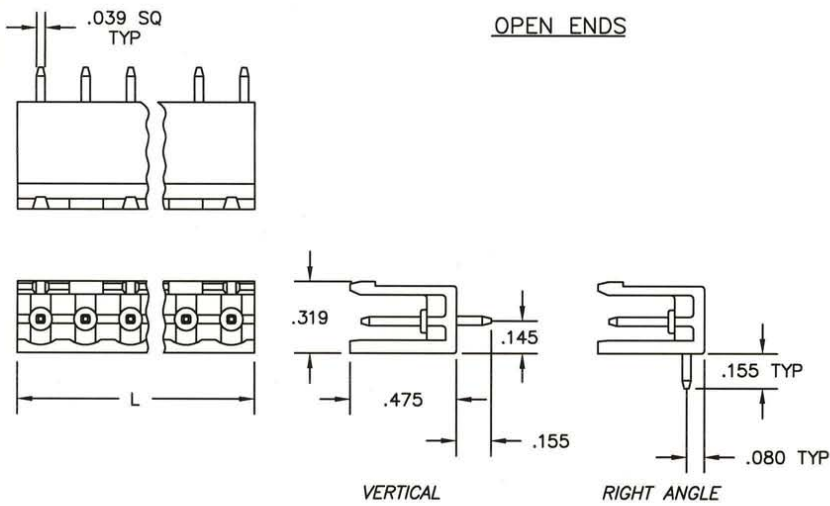
$$L = (\text{NUM OF POS} \times \text{CL SPACING}) + .006$$

MOUNTING EARS



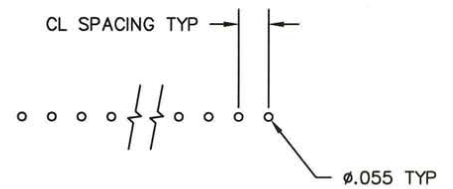
$$L = (\text{NUM OF POS} \times \text{CL SPACING}) + .006$$

OPEN ENDS



$$L = \text{NUM OF POS} \times \text{CL SPACING}$$

PRINTED CIRCUIT BOARD CONFIGURATION



RECOMMENDED PCB THICKNESS: .062±.008

| | | |
|-------------|-------------|--------------|
| SIZE | DWG NO. | REV |
| A | ELFH02110 | 1 |
| CODE: 58982 | SCALE: NONE | SHEET 2 OF 2 |

