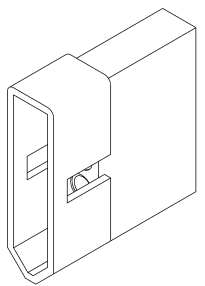
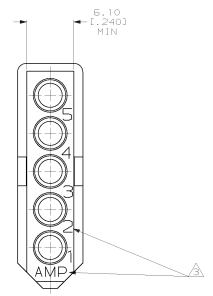
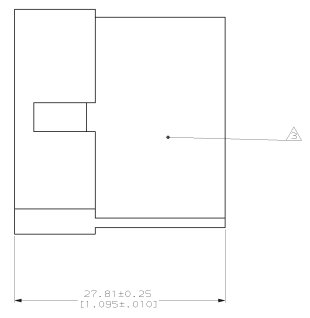
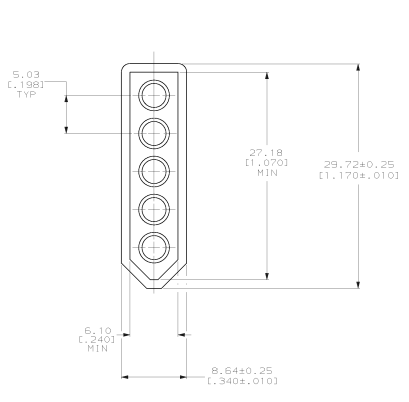


DRAWING MADE IN THIRD ANGLE PROJECTION
 THIS DRAWING IS UNPUBLISHED. RELEASED FOR PUBLICATION
 © COPYRIGHT 19 BY AMP INCORPORATED. ALL INTERNATIONAL RIGHTS RESERVED.

REV. NO.		DATE		DESCRIPTION		DATE	APPD.
CM	53			H	REV PER EC DL30-0025-97	3-4-97	25-25

- 1. AMP LOGO AND CIRCUIT I.D. LOCATED APPROX. AS SHOWN.
- 2. DIMENSIONS IN BRACKETS ARE IN INCHES.
- 3. MARKING FOR UL LOGO AND CSA LOGO LOCATED APPROX. AS SHOWN.



3-DIMENSIONAL MODEL NTS

METRIC

DO NOT SCALE PRINT. UNLESS SPECIFIED DIMENSIONS IN mm (INCHES) TOLERANCES IN μ F P/LC DEC # 0.13(0.005) MILES # C		DR 1-25-94 EC 3-25-94 CHR 5-24-94 APPD 1-31-94 EC 1-31-94 C 1-31-94 C 1-31-94 C 1-31-94 C 1-31-94		770084-1 PART NO.	
MATERIAL NYLON, UL 94V-2 NATURAL		NAME AMP AMP Incorporated Harrisburg, PA 17105-3608		PLUG, 5 CIRCUIT, COMMERCIAL PIN AND SOCKET	
FINISH -		APPLICATION SPEC -		SIZE D 00779	
RETURN -		DRAWING NO. 770084		SHEET 1 OF 1	

CUSTOMER DRAWING