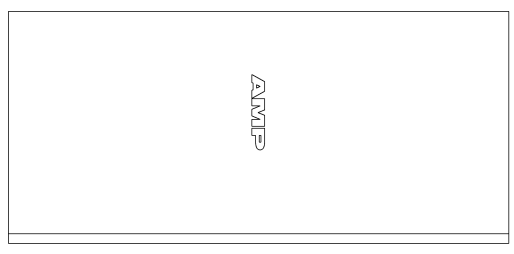
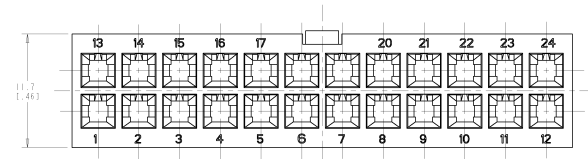
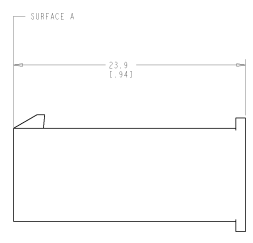
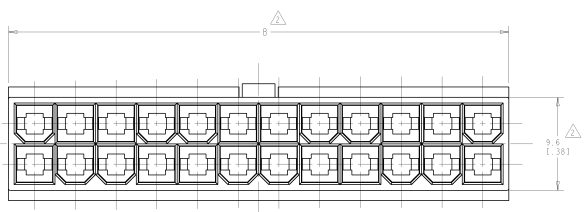
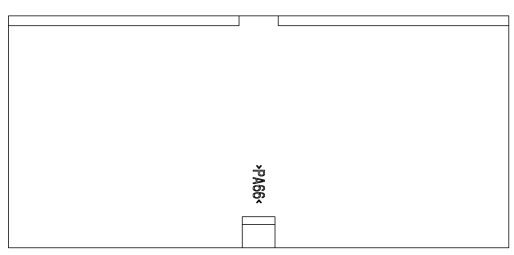


DATE REVISIONS TO SUPERSEDES	REVISIONS FOR FACILITIES
02 COMPLETED IN	01 AMP INCORPORATED ALL RIGHTS RESERVED

REV	DATE	REVISIONS	BY	CHK	APP
5.3					
0		RESD PER PR. CM 11-27			

- △ NYLON, UL94V-2, NATURAL.
- △ DIMENSION TO BE CHECKED AT SURFACE A.
- 3. DIMENSIONS IN BRACKETS ARE IN INCHES.
- 4. MALE CONTACTS MUST BE INSERTED SO THAT THE TOP OF THE WIRE AND INSULATION CRIMPS ARE FACING THE SIDE OF THE HOUSING WITH THE LOCKING LATCH.



51.612.0321	24	2-794542-4
47.461.8661	22	2-794542-2
43.211.7011	20	2-794542-0
39.011.5351	18	1-794542-8
34.811.3701	16	1-794542-6
30.611.2051	14	1-794542-4
26.411.0391	12	1-794542-2
22.211.8741	10	1-794542-0
18.1091	8	794542-8
13.91.5431	6	794542-6
9.61.3781	4	794542-4
5.41.2131	2	794542-2



METRIC CORPORATION 1000 METRIC DRIVE PITTSBURGH, PA 15106-0001		AMP AMP Incorporated 2701 24th POSITION AMP-BUAC™ POWER CONNECTOR	
PART NUMBER: 00779 DATE CODE: 02-794542	CUSTOMER DRAWING: 00779	NO. OF POSITIONS: 24	PART NUMBER: 2-794542-4