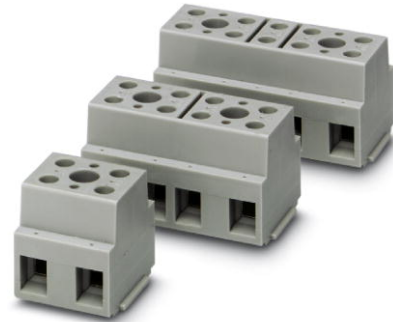


G 10/ 4

Order No.: 2716729

The illustration shows a combination of versions G 10/2, G 10/4 and G 10/5



<http://eshop.phoenixcontact.de/phoenix/treeViewClick.do?UID=2716729>

Device terminal block, for direct mounting, 4-pos.

Commercial data

| | |
|--------------------------|--------------------|
| EAN | 4017918061999 |
| Pack | 10 pcs. |
| Customs tariff | 85369010 |
| Weight/Piece | 0.07271 KG |
| Catalog page information | Page 443 (CL-2009) |

Product notes

WEEE/RoHS-compliant since:
01/01/2003



<http://www.download.phoenixcontact.com>
Please note that the data given here has been taken from the online catalog. For comprehensive information and data, please refer to the user documentation. The General Terms and Conditions of Use apply to Internet downloads.

Technical data

General

| | |
|------------------------------------|------|
| Number of levels | 1 |
| Number of connections | 8 |
| Color | gray |
| Insulating material | PA |
| Inflammability class acc. to UL 94 | V2 |

Dimensions

| | |
|--------|-------|
| Length | 22 mm |
| Width | 57 mm |

Technical data

| | |
|----------------------------------|-------------------------|
| Rated surge voltage | 8 kV |
| Pollution degree | 3 |
| Surge voltage category | III |
| Insulating material group | I |
| Connection in acc. with standard | IEC 60947-7-1/IEC 60998 |
| Nominal current I_N | 57 A |
| Nominal voltage U_N | 800 V |

Connection data

| | |
|---|---------------------|
| Conductor cross section solid min. | 0.5 mm ² |
| Conductor cross section solid max. | 16 mm ² |
| Conductor cross section stranded min. | 0.5 mm ² |
| Conductor cross section stranded max. | 10 mm ² |
| Conductor cross section AWG/kcmil min. | 20 |
| Conductor cross section AWG/kcmil max | 6 |
| Conductor cross section stranded, with ferrule without plastic sleeve min. | 0.5 mm ² |
| Conductor cross section stranded, with ferrule without plastic sleeve max. | 16 mm ² |
| Conductor cross section stranded, with ferrule with plastic sleeve min. | 0.5 mm ² |
| Conductor cross section stranded, with ferrule with plastic sleeve max. | 16 mm ² |
| 2 conductors with same cross section, solid min. | 0.5 mm ² |
| 2 conductors with same cross section, solid max. | 6 mm ² |
| 2 conductors with same cross section, stranded min. | 0.5 mm ² |
| 2 conductors with same cross section, stranded max. | 6 mm ² |
| 2 conductors with same cross section, stranded, ferrules without plastic sleeve, min. | 0.5 mm ² |
| 2 conductors with same cross section, stranded, ferrules without plastic sleeve, max. | 6 mm ² |
| 2 conductors with same cross section, stranded, TWIN ferrules with plastic sleeve, min. | 0.5 mm ² |

| | |
|---|-------------------|
| 2 conductors with same cross section, stranded, TWIN ferrules with plastic sleeve, max. | 6 mm ² |
| Type of connection | Screw connection |
| Stripping length | 12 mm |
| Internal cylindrical gage | A3 |
| Screw thread | M4 |
| Tightening torque, min | 1.5 Nm |
| Tightening torque max | 1.8 Nm |

Certificates / Approvals



Certification

CCA, CSA, GOST, KEMA, PRS, UL

CSA

| | |
|--------------------------------|-------|
| Nominal voltage U _N | 600 V |
| Nominal current I _N | 65 A |
| AWG/kcmil | 22-6 |

UL

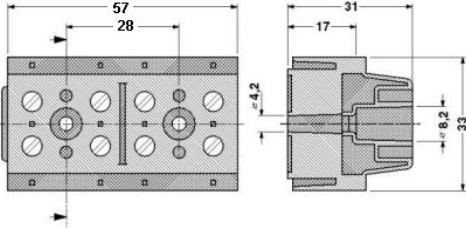
| | |
|--------------------------------|-------|
| Nominal voltage U _N | 600 V |
| Nominal current I _N | 65 A |
| AWG/kcmil | 24-6 |

Accessories

| Item | Designation | Description |
|----------------|-------------|---|
| Marking | | |
| 1401404 | BN WH | Marker pin, unprinted: for individual labeling with M-PEN, lettering field size: 4 x 4 mm |
| Tools | | |
| 1205066 | SZS 1,0X4,0 | Screwdriver, bladed, matches all screw terminal blocks with 10 mm ² and 16 mm ² connection cross section, blade: 1.0 x 4.0 mm |

Diagrams/Drawings

Dimensioned drawing



Address

PHOENIX CONTACT Deutschland GmbH
Flachsmarktstr. 8
32825 Blomberg, Germany
Phone +49 5235 3 12000
Fax +49 5235 3 41200
<http://www.phoenixcontact.de>



© 2010 Phoenix Contact
Technical modifications reserved;