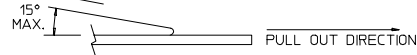


1. LEADER AND TRAILER TAPE



(PEELING DIRECTION AS SHOWN IN FOLLOWING FIGURE)



4. TAPE & REEL QUANTITY = 500 PCS/REEL


4. TAPE & REEL QUANTITY = 500 PCS/REEL

| CKT. SIZE | INCH | MM | INCH | MM | INCH | MM | ITEM NO. TUBE PACKED (WITHOUT CAP) | ITEM NO. TAPE PACKED (WITH CAP) | ITEM NO. TUBE PACKED (WITHOUT CAP) | ITEM NO. TAPE PACKED (WITH CAP) | ITEM NO. TUBE PACKED (WITHOUT CAP) | ITEM NO. TAPE PACKED (WITH CAP) |
|-----------|-------|---------|-------|---------|------|--------|--|---------------------------------------|--|---------------------------------------|--|---------------------------------------|
| 04 | .079 | (2.00) | .165 | (4.19) | .183 | (4.65) | 79109-0001 | 79109-8001 | 79109-0051 | 79109-8051 | X | 79109-0101 |
| 06 | .157 | (4.00) | .244 | (6.19) | .183 | (4.65) | 79109-0022 | 79109-8002 | 79109-0052 | 79109-8052 | X | 79109-0102 |
| 08 | .236 | (6.00) | .322 | (8.19) | .183 | (4.65) | 79109-0003 | 79109-8003 | 79109-0053 | 79109-8053 | X | 79109-0103 |
| 10 | .315 | (8.00) | .401 | (10.19) | .183 | (4.65) | 79109-0004 | 79109-8004 | 79109-0054 | 79109-8054 | X | 79109-0104 |
| 12 | .394 | (10.00) | .480 | (12.19) | .183 | (4.65) | 79109-0005 | 79109-8005 | 79109-0055 | 79109-8055 | X | 79109-0105 |
| 14 | .472 | (12.00) | .559 | (14.19) | .183 | (4.65) | 79109-0006 | 79109-8006 | 79109-0056 | 79109-8056 | X | 79109-0106 |
| 16 | .551 | (14.00) | .637 | (16.19) | .183 | (4.65) | 79109-0007 | 79109-8007 | 79109-0057 | 79109-8057 | X | 79109-0107 |
| 18 | .630 | (16.00) | .716 | (18.19) | .183 | (4.65) | 79109-0008 | 79109-8008 | 79109-0058 | 79109-8058 | X | 79109-0108 |
| 20 | .709 | (18.00) | .795 | (20.19) | .183 | (4.65) | 79109-0009 | 79109-8009 | 79109-0059 | 79109-8059 | X | 79109-0109 |
| 22 | .787 | (20.00) | .874 | (22.19) | .183 | (4.65) | 79109-0010 | 79109-8010 | 79109-0060 | 79109-8060 | X | 79109-0110 |
| 24 | .866 | (22.00) | .952 | (24.19) | .183 | (4.65) | 79109-0011 | 79109-8011 | 79109-0061 | 79109-8061 | X | 79109-0111 |
| 26 | .945 | (24.00) | 1.031 | (26.19) | .183 | (4.65) | 79109-0012 | 79109-8012 | 79109-0062 | 79109-8062 | X | 79109-0112 |
| 28 | 1.024 | (26.00) | 1.110 | (28.19) | .183 | (4.65) | 79109-0013 | 79109-8013 | 79109-0063 | 79109-8063 | X | 79109-0113 |
| 30 | 1.102 | (28.00) | 1.188 | (30.19) | .183 | (4.65) | 79109-0014 | 79109-8014 | 79109-0064 | 79109-8064 | X | 79109-0114 |
| 32 | 1.181 | (30.00) | 1.267 | (32.19) | .183 | (4.65) | 79109-0015 | 79109-8015 | 79109-0065 | 79109-8065 | X | 79109-0115 |
| 34 | 1.260 | (32.00) | 1.346 | (34.19) | .183 | (4.65) | 79109-0016 | 79109-8016 | 79109-0066 | 79109-8066 | X | 79109-0116 |
| 36 | 1.338 | (34.00) | 1.425 | (36.19) | .183 | (4.65) | 79109-0017 | 79109-8017 | 79109-0067 | 79109-8067 | X | 79109-0117 |
| 38 | 1.417 | (36.00) | 1.504 | (38.19) | .183 | (4.65) | 79109-0018 | 79109-8018 | 79109-0068 | 79109-8068 | X | 79109-0118 |
| 40 | 1.496 | (38.00) | 1.582 | (40.19) | .183 | (4.65) | 79109-0019 | 79109-8019 | 79109-0069 | 79109-8069 | X | 79109-0119 |
| 42 | 1.575 | (40.00) | 1.661 | (42.19) | .183 | (4.65) | 79109-0020 | 79109-8020 | 79109-0070 | 79109-8070 | X | 79109-0120 |
| 44 | 1.654 | (42.00) | 1.740 | (44.19) | .183 | (4.65) | 79109-0021 | 79109-8021 | 79109-0071 | 79109-8071 | X | 79109-0121 |
| 46 | 1.732 | (44.00) | 1.818 | (46.19) | .183 | (4.65) | 79109-0022 | 79109-8022 | 79109-0072 | 79109-8072 | X | 79109-0122 |
| 48 | 1.811 | (46.00) | 1.897 | (48.19) | .183 | (4.65) | 79109-0023 | 79109-8023 | 79109-0073 | 79109-8073 | X | 79109-0123 |
| 50 | 1.890 | (48.00) | 1.976 | (50.19) | .183 | (4.65) | 79109-0024 | 79109-8024 | 79109-0074 | 79109-8074 | X | 79109-0124 |

'X' INDICATES TOOLING NOT AVAILABLE

SPECIAL PACKAGING (TAPE PACKED WITHOUT CAP)

| DIM. "A" | | DIM. "B" | | DIM. "D" | | ITEM NO. | PLATING OPTION SEE SHEET 1 |
|--------------|------|----------|------|----------|------|----------|----------------------------------|
| CKT. SIZE | INCH | MM | INCH | MM | INCH | MM | |
| 06 | .157 | (4.00) | .244 | (6.19) | .183 | (4.65) | 79109-9000 2 |
| 20 | .709 | (18.00) | .795 | (20.19) | .183 | (4.65) | 79109-9001 2 |
| 50 | L890 | (48.00) | L976 | (50.19) | .183 | (4.65) | 79109-9002 2 |
| 34 | L260 | (32.00) | L346 | (34.19) | .183 | (4.65) | 79109-9003 2 |

| ADD LEADER & TRAILER | 2005/10/19 | 2005/10/19 | DESCRIPTION | QUALITY SYMBOLS | GENERAL TOLERANCES (UNLESS SPECIFIED) | DIMENSION STYLE | | SCALE | DESIGN UNITS |  THIRD ANGLE PROJECTION | | | | | | | | | | | | | | | | | | | | | | | | | | | | | | | | | | | | | | |
|----------------------|-------------------|------------|-------------|-------------------------------|---|--|----------------|--------------------|--------------|--|--------|----------|--------|--------|----------|--------|--------|---------|--------|--------|---------------|--|--|--|----------|-----|------|------------|------------|--|------|--|------|--|------|------------|-------------|--|------|--|-----|--|------|------------|-------|--|---|--|
| | EC NO. S2005-0714 | DRINKSEE | | | | CHCKDBHLOW | APPR-PTLIM | IN/MM | NTS | | INCH | | | | | | | | | | | | | | | | | | | | | | | | | | | | | | | | | | | | | |
| | | | | | | | | | | | | | | | | | | | | | | | | | | | | | | | | | | | | | | | | | | | | | | | | |
| | | | | | | | | | | | | | | | | | | | | | | | | | | | | | | | | | | | | | | | | | | | | | | | | |
| | | | | <div>▼=0</div> <div>▽=0</div> | <table><thead><tr><th></th><th>mm</th><th>INCH</th></tr></thead><tbody><tr><td>4 PLACES</td><td>± .004</td><td>± .004</td></tr><tr><td>3 PLACES</td><td>± .004</td><td>± .010</td></tr><tr><td>2 PLACES</td><td>± .025</td><td>± .015</td></tr><tr><td>1 PLACE</td><td>± .038</td><td>± .004</td></tr><tr><td colspan="3">ANGULAR ± 3 °</td></tr></tbody></table> | | mm | INCH | 4 PLACES | ± .004 | ± .004 | 3 PLACES | ± .004 | ± .010 | 2 PLACES | ± .025 | ± .015 | 1 PLACE | ± .038 | ± .004 | ANGULAR ± 3 ° | | | <table><tbody><tr><td>DRAWN BY</td><td>AAB</td><td>DATE</td><td>1989/05/15</td></tr><tr><td>CHECKED BY</td><td></td><td>DATE</td><td></td></tr><tr><td>M/JM</td><td></td><td>DATE</td><td>1989/05/15</td></tr><tr><td>APPROVED BY</td><td></td><td>DATE</td><td></td></tr><tr><td>WAZ</td><td></td><td>DATE</td><td>1989/05/15</td></tr></tbody></table> | DRAWN BY | AAB | DATE | 1989/05/15 | CHECKED BY | | DATE | | M/JM | | DATE | 1989/05/15 | APPROVED BY | | DATE | | WAZ | | DATE | 1989/05/15 | TITLE | | SALES DRAWING 2MM DUAL ROW VERTICAL RECEPTACLE, SMT | |
| | mm | INCH | | | | | | | | | | | | | | | | | | | | | | | | | | | | | | | | | | | | | | | | | | | | | | |
| 4 PLACES | ± .004 | ± .004 | | | | | | | | | | | | | | | | | | | | | | | | | | | | | | | | | | | | | | | | | | | | | | |
| 3 PLACES | ± .004 | ± .010 | | | | | | | | | | | | | | | | | | | | | | | | | | | | | | | | | | | | | | | | | | | | | | |
| 2 PLACES | ± .025 | ± .015 | | | | | | | | | | | | | | | | | | | | | | | | | | | | | | | | | | | | | | | | | | | | | | |
| 1 PLACE | ± .038 | ± .004 | | | | | | | | | | | | | | | | | | | | | | | | | | | | | | | | | | | | | | | | | | | | | | |
| ANGULAR ± 3 ° | | | | | | | | | | | | | | | | | | | | | | | | | | | | | | | | | | | | | | | | | | | | | | | | |
| DRAWN BY | AAB | DATE | 1989/05/15 | | | | | | | | | | | | | | | | | | | | | | | | | | | | | | | | | | | | | | | | | | | | | |
| CHECKED BY | | DATE | | | | | | | | | | | | | | | | | | | | | | | | | | | | | | | | | | | | | | | | | | | | | | |
| M/JM | | DATE | 1989/05/15 | | | | | | | | | | | | | | | | | | | | | | | | | | | | | | | | | | | | | | | | | | | | | |
| APPROVED BY | | DATE | | | | | | | | | | | | | | | | | | | | | | | | | | | | | | | | | | | | | | | | | | | | | | |
| WAZ | | DATE | 1989/05/15 | | | | | | | | | | | | | | | | | | | | | | | | | | | | | | | | | | | | | | | | | | | | | |
| | | | | | | MATERIAL NO. | DOCUMENT NO. | MOLEX INCORPORATED | | SHEET NO. | | | | | | | | | | | | | | | | | | | | | | | | | | | | | | | | | | | | | | |
| | | | | | | SEE TABLE | SDA-79109-**** | | | 2 OF 9 | | | | | | | | | | | | | | | | | | | | | | | | | | | | | | | | | | | | | | |
| | | | | | | SIZE A THIS DRAWING CONTAINS INFORMATION THAT IS PROPRIETARY TO MOLEX INCORPORATED AND SHOULD NOT BE USED WITHOUT WRITTEN PERMISSION | | | | | | | | | | | | | | | | | | | | | | | | | | | | | | | | | | | | | | | | | | |

10 9 8 7 6 5 4 3 2 1

TIN OPTION

| CKT. SIZE | DIM. "A" | | DIM. "B" | | DIM. "D" | | PLATING OPTION 5 | | PLATING OPTION 4 | | PLATING OPTION 6 | |
|-----------|----------|---------|----------|---------|----------|--------|------------------------------------|---------------------------------|------------------------------------|---------------------------------|------------------------------------|---------------------------------|
| | INCH | MM | INCH | MM | INCH | MM | ITEM NO. TUBE PACKED (WITHOUT CAP) | ITEM NO. TAPE PACKED (WITH CAP) | ITEM NO. TUBE PACKED (WITHOUT CAP) | ITEM NO. TAPE PACKED (WITH CAP) | ITEM NO. TUBE PACKED (WITHOUT CAP) | ITEM NO. TAPE PACKED (WITH CAP) |
| | | | | | | | | | | | | |
| 04 | .079 | (2.00) | .165 | (4.19) | .183 | (4.65) | 79109-1001 | 79109-8401 | 79109-1051 | 79109-8451 | X 79109-1101 | - |
| 06 | .157 | (4.00) | .244 | (6.19) | .183 | (4.65) | 79109-1002 | 79109-8402 | 79109-1052 | 79109-8452 | X 79109-1102 | - |
| 08 | .236 | (6.00) | .322 | (8.19) | .183 | (4.65) | 79109-1003 | 79109-8403 | 79109-1053 | 79109-8453 | X 79109-1103 | - |
| 10 | .315 | (8.00) | .401 | (10.19) | .183 | (4.65) | 79109-1004 | 79109-8404 | 79109-1054 | 79109-8454 | X 79109-1104 | - |
| 12 | .394 | (10.00) | .480 | (12.19) | .183 | (4.65) | 79109-1005 | 79109-8405 | 79109-1055 | 79109-8455 | X 79109-1105 | - |
| 14 | .472 | (12.00) | .559 | (14.19) | .183 | (4.65) | 79109-1006 | 79109-8406 | 79109-1056 | 79109-8456 | X 79109-1106 | - |
| 16 | .551 | (14.00) | .637 | (16.19) | .183 | (4.65) | 79109-1007 | 79109-8407 | 79109-1057 | 79109-8457 | X 79109-1107 | - |
| 18 | .630 | (16.00) | .716 | (18.19) | .183 | (4.65) | 79109-1008 | 79109-8408 | 79109-1058 | 79109-8458 | X 79109-1108 | - |
| 20 | .709 | (18.00) | .795 | (20.19) | .183 | (4.65) | 79109-1009 | 79109-8409 | 79109-1059 | 79109-8459 | X 79109-1109 | - |
| 22 | .787 | (20.00) | .874 | (22.19) | .183 | (4.65) | 79109-1010 | 79109-8410 | 79109-1060 | 79109-8460 | X 79109-1110 | - |
| 24 | .866 | (22.00) | .952 | (24.19) | .183 | (4.65) | 79109-1011 | 79109-8411 | 79109-1061 | 79109-8461 | X 79109-1111 | - |
| 26 | .945 | (24.00) | 1.031 | (26.19) | .183 | (4.65) | 79109-1012 | 79109-8412 | 79109-1062 | 79109-8462 | X 79109-1112 | - |
| 28 | 1.024 | (26.00) | 1.110 | (28.19) | .183 | (4.65) | 79109-1013 | 79109-8413 | 79109-1063 | 79109-8463 | X 79109-1113 | - |
| 30 | 1.102 | (28.00) | 1.188 | (30.19) | .183 | (4.65) | 79109-1014 | 79109-8414 | 79109-1064 | 79109-8464 | X 79109-1114 | - |
| 32 | 1.181 | (30.00) | 1.267 | (32.19) | .183 | (4.65) | 79109-1015 | 79109-8415 | 79109-1065 | 79109-8465 | X 79109-1115 | - |
| 34 | 1.260 | (32.00) | 1.346 | (34.19) | .183 | (4.65) | 79109-1016 | 79109-8416 | 79109-1066 | 79109-8466 | X 79109-1116 | - |
| 36 | 1.338 | (34.00) | 1.425 | (36.19) | .183 | (4.65) | 79109-1017 | 79109-8417 | 79109-1067 | 79109-8467 | X 79109-1117 | - |
| 38 | 1.417 | (36.00) | 1.504 | (38.19) | .183 | (4.65) | 79109-1018 | 79109-8418 | 79109-1068 | 79109-8468 | X 79109-1118 | - |
| 40 | 1.496 | (38.00) | 1.582 | (40.19) | .183 | (4.65) | 79109-1019 | 79109-8419 | 79109-1069 | 79109-8469 | X 79109-1119 | - |
| 42 | 1.575 | (40.00) | 1.661 | (42.19) | .183 | (4.65) | 79109-1020 | 79109-8420 | 79109-1070 | 79109-8470 | X 79109-1120 | - |
| 44 | 1.654 | (42.00) | 1.740 | (44.19) | .183 | (4.65) | 79109-1021 | 79109-8421 | 79109-1071 | 79109-8471 | X 79109-1121 | - |
| 46 | 1.732 | (44.00) | 1.818 | (46.19) | .183 | (4.65) | 79109-1022 | 79109-8422 | 79109-1072 | 79109-8472 | X 79109-1122 | - |
| 48 | 1.811 | (46.00) | 1.897 | (48.19) | .183 | (4.65) | 79109-1023 | 79109-8423 | 79109-1073 | 79109-8473 | X 79109-1123 | - |
| 50 | 1.890 | (48.00) | 1.976 | (50.19) | .183 | (4.65) | 79109-1024 | 79109-8424 | 79109-1074 | 79109-8474 | X 79109-1124 | - |

X INDICATES TOOLING NOT AVAILABLE

SPECIAL PACKAGING (TAPE PACKED WITHOUT CAP)

| CKT. SIZE | DIM. "A" | | DIM. "B" | | DIM. "D" | | ITEM NO. | PLATING OPTION SEE SHEET 1 |
|-----------|----------|---------|----------|---------|----------|--------|------------|-------------------------------|
| | INCH | MM | INCH | MM | INCH | MM | | |
| 06 | .157 | (4.00) | .244 | (6.19) | .183 | (4.65) | 79109-9004 | 5 |
| 20 | .709 | (18.00) | .795 | (20.19) | .183 | (4.65) | 79109-9005 | 5 |
| 50 | 1.890 | (48.00) | 1.976 | (50.19) | .183 | (4.65) | 79109-9006 | 5 |
| 34 | 1.260 | (32.00) | 1.346 | (34.19) | .183 | (4.65) | 79109-9007 | 5 |

UPDATE REVISION
EC NO. S2005-0714
L3
2005/10/19
DRAWN BY
CHKD-BILLOM
APPR-PTLM
2005/10/19
2005/11/06

DESCRIPTION
REV

QUALITY SYMBOLS
▽=0
▽=0

GENERAL TOLERANCES (UNLESS SPECIFIED)
4 PLACES ± --- ± ---
3 PLACES ± --- ± .010
2 PLACES ± 0.25 ± .015
1 PLACE ± 0.38 ± ---
ANGULAR ± 3 °
DRAFT WHERE APPLICABLE
MUST REMAIN
WITHIN DIMENSIONS

DIMENSION STYLE
IN/MM
DRAWN BY
DATE
AAB
1989/05/15
CHECKED BY
DATE
MJM
1989/05/15
APPROVED BY
DATE
WAZ
1989/05/15
MATERIAL NO.
SEE TABLE
SIZE
A3

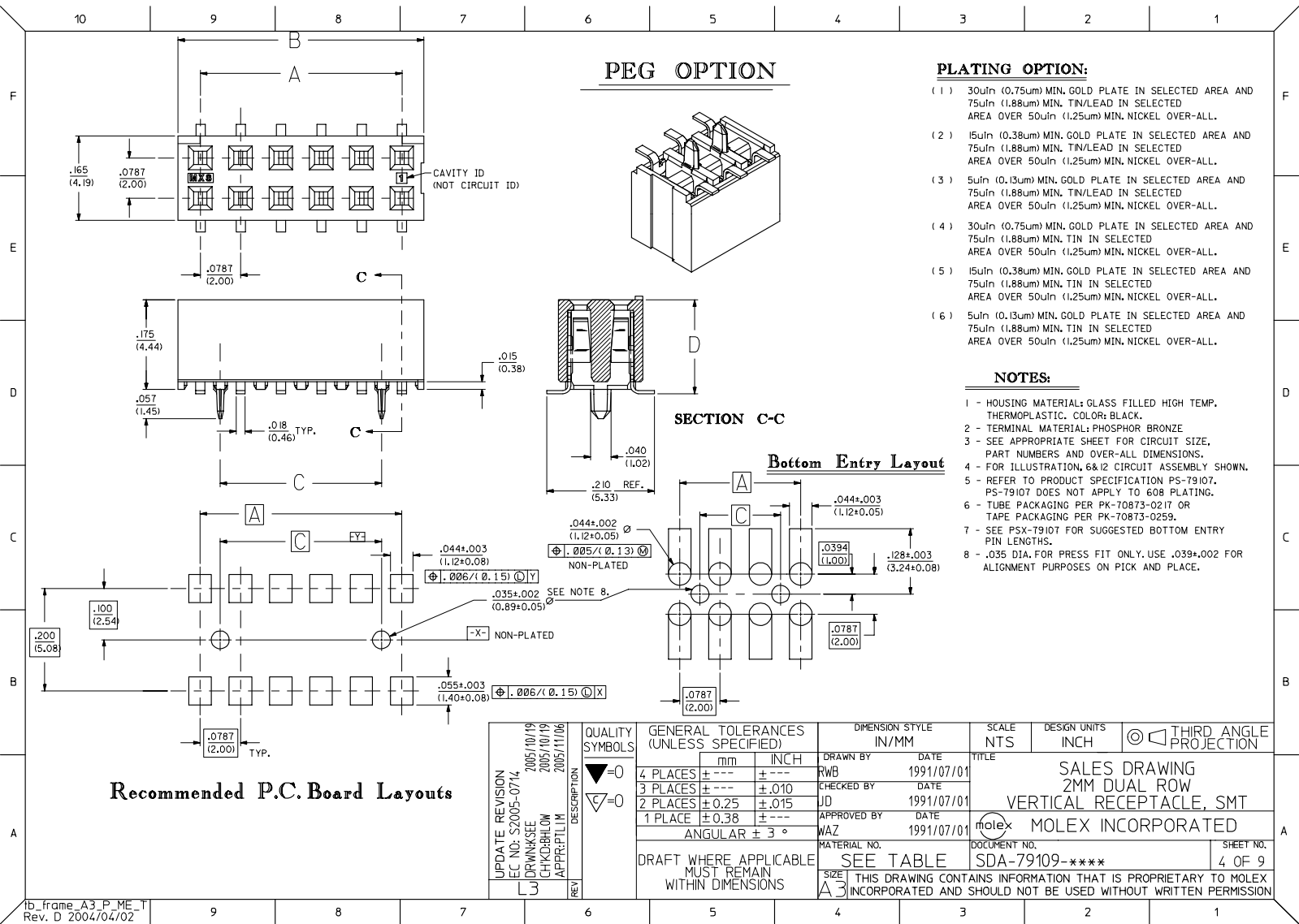
SCALE
NTS
DESIGN UNITS
INCH
THIRD ANGLE
PROJECTION
TITLE
SALES DRAWING
2MM DUAL ROW
VERTICAL RECEPTACLE, SMT
MOLEX INCORPORATED
DOCUMENT NO.
SDA-79109-****
SHEET NO.
3 OF 9

THIS DRAWING CONTAINS INFORMATION THAT IS PROPRIETARY TO MOLEX INCORPORATED AND SHOULD NOT BE USED WITHOUT WRITTEN PERMISSION

10 9 8 7 6 5 4 3 2 1

ib_frame_A3_P_ME_T
Rev. D 2004/04/02

Downloaded from Elcodis.com electronic components distributor



10987654321

F

E

D

C

B

A

PEG OPTION (TIN/LEAD)

| CKT. SIZE | DIM. "A" | | DIM. "B" | | DIM. "C" | | DIM. "D" | | PLATING OPTION 2 | | PLATING OPTION 1 | | PLATING OPTION 3 | |
|-----------|----------|---------|----------|---------|----------|---------|----------|--------|------------------------------------|---------------------------------|------------------------------------|---------------------------------|------------------------------------|---------------------------------|
| | INCH | MM | INCH | MM | INCH | MM | INCH | MM | ITEM NO. TUBE PACKED (WITHOUT CAP) | ITEM NO. TAPE PACKED (WITH CAP) | ITEM NO. TUBE PACKED (WITHOUT CAP) | ITEM NO. TAPE PACKED (WITH CAP) | ITEM NO. TUBE PACKED (WITHOUT CAP) | ITEM NO. TAPE PACKED (WITH CAP) |
| 04 | .079 | (2.00) | .165 | (4.19) | - | - | .183 | (4.65) | 79109-0201 | 79109-8201 | 79109-0251 | 79109-8251 | X | 79109-0301 |
| 06 | .157 | (4.00) | .244 | (6.19) | .079 | (2.00) | .183 | (4.65) | 79109-0202 | 79109-8202 | 79109-0252 | 79109-8252 | X | 79109-0302 |
| 08 | .236 | (6.00) | .322 | (8.19) | .157 | (4.00) | .183 | (4.65) | 79109-0203 | 79109-8203 | 79109-0253 | 79109-8253 | X | 79109-0303 |
| 10 | .315 | (8.00) | .401 | (10.19) | .236 | (6.00) | .183 | (4.65) | 79109-0204 | 79109-8204 | 79109-0254 | 79109-8254 | X | 79109-0304 |
| 12 | .394 | (10.00) | .480 | (12.19) | .315 | (8.00) | .183 | (4.65) | 79109-0205 | 79109-8205 | 79109-0255 | 79109-8255 | X | 79109-0305 |
| 14 | .472 | (12.00) | .559 | (14.19) | .394 | (10.00) | .183 | (4.65) | 79109-0206 | 79109-8206 | 79109-0256 | 79109-8256 | X | 79109-0306 |
| 16 | .551 | (14.00) | .637 | (16.19) | .472 | (12.00) | .183 | (4.65) | 79109-0207 | 79109-8207 | 79109-0257 | 79109-8257 | X | 79109-0307 |
| 18 | .630 | (16.00) | .716 | (18.19) | .551 | (14.00) | .183 | (4.65) | 79109-0208 | 79109-8208 | 79109-0258 | 79109-8258 | X | 79109-0308 |
| 20 | .709 | (18.00) | .795 | (20.19) | .630 | (16.00) | .183 | (4.65) | 79109-0209 | 79109-8209 | 79109-0259 | 79109-8259 | X | 79109-0309 |
| 22 | .787 | (20.00) | .874 | (22.19) | .709 | (18.00) | .183 | (4.65) | 79109-0210 | 79109-8210 | 79109-0260 | 79109-8260 | X | 79109-0310 |
| 24 | .866 | (22.00) | .952 | (24.19) | .787 | (20.00) | .183 | (4.65) | 79109-0211 | 79109-8211 | 79109-0261 | 79109-8261 | X | 79109-0311 |
| 26 | .945 | (24.00) | 1.031 | (26.19) | .866 | (22.00) | .183 | (4.65) | 79109-0212 | 79109-8212 | 79109-0262 | 79109-8262 | X | 79109-0312 |
| 28 | 1.024 | (26.00) | 1.110 | (28.19) | .945 | (24.00) | .183 | (4.65) | 79109-0213 | 79109-8213 | 79109-0263 | 79109-8263 | X | 79109-0313 |
| 30 | 1.102 | (28.00) | 1.188 | (30.19) | 1.024 | (26.00) | .183 | (4.65) | 79109-0214 | 79109-8214 | 79109-0264 | 79109-8264 | X | 79109-0314 |
| 32 | 1.181 | (30.00) | 1.267 | (32.19) | 1.102 | (28.00) | .183 | (4.65) | 79109-0215 | 79109-8215 | 79109-0265 | 79109-8265 | X | 79109-0315 |
| 34 | 1.260 | (32.00) | 1.346 | (34.19) | 1.181 | (30.00) | .183 | (4.65) | 79109-0216 | 79109-8216 | 79109-0266 | 79109-8266 | X | 79109-0316 |
| 36 | 1.338 | (34.00) | 1.425 | (36.19) | 1.260 | (32.00) | .183 | (4.65) | 79109-0217 | 79109-8217 | 79109-0267 | 79109-8267 | X | 79109-0317 |
| 38 | 1.417 | (36.00) | 1.504 | (38.19) | 1.338 | (34.00) | .183 | (4.65) | 79109-0218 | 79109-8218 | 79109-0268 | 79109-8268 | X | 79109-0318 |
| 40 | 1.496 | (38.00) | 1.582 | (40.19) | 1.417 | (36.00) | .183 | (4.65) | 79109-0219 | 79109-8219 | 79109-0269 | 79109-8269 | X | 79109-0319 |
| 42 | 1.575 | (40.00) | 1.661 | (42.19) | 1.496 | (38.00) | .183 | (4.65) | 79109-0220 | 79109-8220 | 79109-0270 | 79109-8270 | X | 79109-0320 |
| 44 | 1.654 | (42.00) | 1.740 | (44.19) | 1.575 | (40.00) | .183 | (4.65) | 79109-0221 | 79109-8221 | 79109-0271 | 79109-8271 | X | 79109-0321 |
| 46 | 1.732 | (44.00) | 1.818 | (46.19) | 1.654 | (42.00) | .183 | (4.65) | 79109-0222 | 79109-8222 | 79109-0272 | 79109-8272 | X | 79109-0322 |
| 48 | 1.811 | (46.00) | 1.897 | (48.19) | 1.732 | (44.00) | .183 | (4.65) | 79109-0223 | 79109-8223 | 79109-0273 | 79109-8273 | X | 79109-0323 |
| 50 | 1.890 | (48.00) | 1.976 | (50.19) | 1.811 | (46.00) | .183 | (4.65) | 79109-0224 | 79109-8224 | 79109-0274 | 79109-8274 | X | 79109-0324 |

*X INDICATES TOOLING NOT AVAILABLE

SPECIAL PACKAGING (TAPE PACKED WITHOUT CAP)

| CKT. SIZE | DIM. "A" | | DIM. "B" | | DIM. "D" | | ITEM NO. | PLATING OPTION SEE SHEET 1 |
|-----------|----------|---------|----------|---------|----------|--------|------------|-------------------------------|
| | INCH | MM | INCH | MM | INCH | MM | | |
| 50 | 1.890 | (48.00) | 1.976 | (50.19) | .183 | (4.65) | 79109-9102 | 2 |

UPDATE REVISION
EC NO. S2005-0714
DRAWN BY: J3
CHKD BY: CHIKO-BILLOM
APPR: PTLIM
REV

2005/10/19
2005/10/19
2005/11/06

QUALITY SYMBOLS
▽=0
▽=0

GENERAL TOLERANCES (UNLESS SPECIFIED)
4 PLACES ± --- ± ---
3 PLACES ± --- ± .010
2 PLACES ± 0.25 ± .015
1 PLACE ± 0.38 ± ---
ANGULAR ± 3 °

DRAFT WHERE APPLICABLE
MUST REMAIN
WITHIN DIMENSIONS

DIMENSION STYLE
IN/MM
DRAWN BY: RWB
DATE: 1991/07/01
CHECKED BY: JD
DATE: 1991/07/01
APPROVED BY: WAZ
DATE: 1991/07/01
MATERIAL NO.
SIZE: A3

SCALE
NTS
DESIGN UNITS
INCH
THIRD ANGLE PROJECTION

TITLE
SALES DRAWING
2MM DUAL ROW, WITH PEG
VERTICAL RECEPTACLE, SMT
MOLEX MOLEX INCORPORATED
DOCUMENT NO.
SDA-79109-****
SHEET NO.
5 OF 9

THIS DRAWING CONTAINS INFORMATION THAT IS PROPRIETARY TO MOLEX INCORPORATED AND SHOULD NOT BE USED WITHOUT WRITTEN PERMISSION

10987654321

10987654321

F

E

D

C

B

A

PEG OPTION (TIN)

| | DIM. "A" | | DIM. "B" | | DIM. "C" | | DIM. "D" | | PLATING OPTION 5 | | PLATING OPTION 4 | | PLATING OPTION 6 | |
|-----------|----------|---------|----------|---------|----------|---------|----------|--------|--|---------------------------------------|--|---------------------------------------|--|---------------------------------------|
| CKT. SIZE | INCH | MM | INCH | MM | INCH | MM | INCH | MM | ITEM NO. TUBE PACKED (WITHOUT CAP) | ITEM NO. TAPE PACKED (WITH CAP) | ITEM NO. TUBE PACKED (WITHOUT CAP) | ITEM NO. TAPE PACKED (WITH CAP) | ITEM NO. TUBE PACKED (WITHOUT CAP) | ITEM NO. TAPE PACKED (WITH CAP) |
| 04 | .079 | (2.00) | .165 | (4.19) | - | - | .183 | (4.65) | 79109-1201 | 79109-8601 | 79109-1251 | 79109-8651 | X 79109-1301 | - |
| 06 | .157 | (4.00) | .244 | (6.19) | .079 | (2.00) | .183 | (4.65) | 79109-1202 | 79109-8602 | 79109-1252 | 79109-8652 | X 79109-1302 | - |
| 08 | .236 | (6.00) | .322 | (8.19) | .157 | (4.00) | .183 | (4.65) | 79109-1203 | 79109-8603 | 79109-1253 | 79109-8653 | X 79109-1303 | - |
| 10 | .315 | (8.00) | .401 | (10.19) | .236 | (6.00) | .183 | (4.65) | 79109-1204 | 79109-8604 | 79109-1254 | 79109-8654 | X 79109-1304 | - |
| 12 | .394 | (10.00) | .480 | (12.19) | .315 | (8.00) | .183 | (4.65) | 79109-1205 | 79109-8605 | 79109-1255 | 79109-8655 | X 79109-1305 | - |
| 14 | .472 | (12.00) | .559 | (14.19) | .394 | (10.00) | .183 | (4.65) | 79109-1206 | 79109-8606 | 79109-1256 | 79109-8656 | X 79109-1306 | - |
| 16 | .551 | (14.00) | .637 | (16.19) | .472 | (12.00) | .183 | (4.65) | 79109-1207 | 79109-8607 | 79109-1257 | 79109-8657 | X 79109-1307 | - |
| 18 | .630 | (16.00) | .716 | (18.19) | .551 | (14.00) | .183 | (4.65) | 79109-1208 | 79109-8608 | 79109-1258 | 79109-8658 | X 79109-1308 | - |
| 20 | .709 | (18.00) | .795 | (20.19) | .630 | (16.00) | .183 | (4.65) | 79109-1209 | 79109-8609 | 79109-1259 | 79109-8659 | X 79109-1309 | - |
| 22 | .787 | (20.00) | .874 | (22.19) | .709 | (18.00) | .183 | (4.65) | 79109-1210 | 79109-8610 | 79109-1260 | 79109-8660 | X 79109-1310 | - |
| 24 | .866 | (22.00) | .952 | (24.19) | .787 | (20.00) | .183 | (4.65) | 79109-1211 | 79109-8611 | 79109-1261 | 79109-8661 | X 79109-1311 | - |
| 26 | .945 | (24.00) | 1.031 | (26.19) | .866 | (22.00) | .183 | (4.65) | 79109-1212 | 79109-8612 | 79109-1262 | 79109-8662 | X 79109-1312 | - |
| 28 | 1.024 | (26.00) | 1.110 | (28.19) | .945 | (24.00) | .183 | (4.65) | 79109-1213 | 79109-8613 | 79109-1263 | 79109-8663 | X 79109-1313 | - |
| 30 | 1.102 | (28.00) | 1.188 | (30.19) | 1.024 | (26.00) | .183 | (4.65) | 79109-1214 | 79109-8614 | 79109-1264 | 79109-8664 | X 79109-1314 | - |
| 32 | 1.181 | (30.00) | 1.267 | (32.19) | 1.102 | (28.00) | .183 | (4.65) | 79109-1215 | 79109-8615 | 79109-1265 | 79109-8665 | X 79109-1315 | - |
| 34 | 1.260 | (32.00) | 1.346 | (34.19) | 1.181 | (30.00) | .183 | (4.65) | 79109-1216 | 79109-8616 | 79109-1266 | 79109-8666 | X 79109-1316 | - |
| 36 | 1.338 | (34.00) | 1.425 | (36.19) | 1.260 | (32.00) | .183 | (4.65) | 79109-1217 | 79109-8617 | 79109-1267 | 79109-8667 | X 79109-1317 | - |
| 38 | 1.417 | (36.00) | 1.504 | (38.19) | 1.338 | (34.00) | .183 | (4.65) | 79109-1218 | 79109-8618 | 79109-1268 | 79109-8668 | X 79109-1318 | - |
| 40 | 1.496 | (38.00) | 1.582 | (40.19) | 1.417 | (36.00) | .183 | (4.65) | 79109-1219 | 79109-8619 | 79109-1269 | 79109-8669 | X 79109-1319 | - |
| 42 | 1.575 | (40.00) | 1.661 | (42.19) | 1.496 | (38.00) | .183 | (4.65) | 79109-1220 | 79109-8620 | 79109-1270 | 79109-8670 | X 79109-1320 | - |
| 44 | 1.654 | (42.00) | 1.740 | (44.19) | 1.575 | (40.00) | .183 | (4.65) | 79109-1221 | 79109-8621 | 79109-1271 | 79109-8671 | X 79109-1321 | - |
| 46 | 1.732 | (44.00) | 1.818 | (46.19) | 1.654 | (42.00) | .183 | (4.65) | 79109-1222 | 79109-8622 | 79109-1272 | 79109-8672 | X 79109-1322 | - |
| 48 | 1.811 | (46.00) | 1.897 | (48.19) | 1.732 | (44.00) | .183 | (4.65) | 79109-1223 | 79109-8623 | 79109-1273 | 79109-8673 | X 79109-1323 | - |
| 50 | 1.890 | (48.00) | 1.976 | (50.19) | 1.811 | (46.00) | .183 | (4.65) | 79109-1224 | 79109-8624 | 79109-1274 | 79109-8674 | X 79109-1324 | - |

*X INDICATES TOOLING NOT AVAILABLE

SPECIAL PACKAGING (TAPE PACKED WITHOUT CAP)

| DIM. "A" | | DIM. "B" | | DIM. "D" | | ITEM NO. | PLATING OPTION SEE SHEET 1 |
|-----------|-------|----------|-------|----------|------|----------|-------------------------------|
| CKT. SIZE | INCH | MM | INCH | MM | INCH | MM | |
| 50 | 1.890 | (48.00) | 1.976 | (50.19) | .183 | (4.65) | 79109-9103 |

UPDATE REVISION
EC NO. S2005-0714
DRAWN BY: J3
CHKD BY: CHIKO-BILLOM
APPR: PTLIM
REV

2005/10/19
2005/10/19
2005/11/07

QUALITY SYMBOLS
▽=0
▽=0

GENERAL TOLERANCES (UNLESS SPECIFIED)
mm INCH
4 PLACES ± --- ± ---
3 PLACES ± --- ± .010
2 PLACES ± 0.25 ± .015
1 PLACE ± 0.38 ± ---
ANGULAR ± 3 °

DRAFT WHERE APPLICABLE
MUST REMAIN
WITHIN DIMENSIONS

DIMENSION STYLE IN/MM
DRAWN BY: RWB DATE: 1991/07/01
CHECKED BY: JD DATE: 1991/07/01
APPROVED BY: WAZ DATE: 1991/07/01
MATERIAL NO.
SIZE: A3

SCALE NTS
DESIGN UNITS INCH
THIRD ANGLE PROJECTION

TITLE
SALES DRAWING
2MM DUAL ROW
VERTICAL RECEPTACLE, SMT
MOLEX MOLEX INCORPORATED
DOCUMENT NO. SDA-79109-****
SHEET NO. 6 OF 9

THIS DRAWING CONTAINS INFORMATION THAT IS PROPRIETARY TO MOLEX INCORPORATED AND SHOULD NOT BE USED WITHOUT WRITTEN PERMISSION

10987654321

10 9 8 7 6 5 4 3 2 1

VOIDED CIRCUIT OPTION

ASSEMBLIES WITHOUT PEGS

| CKT. SIZE | ASSEMBLY (WITHOUT CAP IN TUBE) | | VOID LOCATION(S) SEE SHEET 1 FOR CONVENTION | | PLATING OPTION | DIM. "A" | | DIM. "B" | | DIM. "D" | | PLATING OPTION |
|-----------|-----------------------------------|------------|--|-------------|----------------|----------|---------|----------|---------|----------|--------|-------------------|
| | ITEM NO. | ENG. NO. | ROW | CKT. NO.(S) | | INCH | MM | INCH | MM | INCH | MM | |
| 22 | 79109-5001 | 79109-5001 | ROW A | 2 | 1 | .787 | (20.00) | .874 | (22.19) | .183 | (4.65) | TIN/LEAD |
| 6 | 79109-5002 | 79109-5002 | ROW A | 2 | 2 | .157 | (4.00) | .244 | (6.19) | .183 | (4.65) | |
| 22 | 79109-5011 | 79109-5011 | ROW A | 2 | 4 | .787 | (20.00) | .874 | (22.19) | .183 | (4.65) | TIN |
| 6 | 79109-5012 | 79109-5012 | ROW A | 2 | 5 | .157 | (4.00) | .244 | (6.19) | .183 | (4.65) | |

ASSEMBLIES WITH PEGS

| CKT. SIZE | ASSEMBLY (WITHOUT CAP IN TUBE) | | VOID LOCATION(S) SEE SHEET 1 FOR CONVENTION | | PLATING OPTION | DIM. "A" | | DIM. "B" | | DIM. "C" | | DIM. "D" | | PLATING OPTION |
|-----------|-----------------------------------|------------|--|-------------|----------------|----------|---------|----------|---------|----------|---------|----------|--------|-------------------|
| | ITEM NO. | ENG. NO. | ROW | CKT. NO.(S) | | INCH | MM | INCH | MM | INCH | MM | INCH | MM | |
| 48 | 79109-6001 | 79109-6001 | ROW A | 1, 24 | 2 | 1.811 | (46.00) | 1.897 | (48.19) | 1.732 | (44.00) | .183 | (4.65) | TIN/LEAD |
| 44 | 79109-6002 | 79109-6002 | ROW B | 10 | 2 | 1.654 | (42.00) | 1.740 | (44.19) | 1.575 | (42.00) | .183 | (4.65) | |
| 48 | 79109-6011 | 79109-6011 | ROW A | 1, 24 | 5 | 1.811 | (46.00) | 1.897 | (48.19) | 1.732 | (44.00) | .183 | (4.65) | TIN |
| 44 | 79109-6012 | 79109-6012 | ROW B | 10 | 5 | 1.654 | (42.00) | 1.740 | (44.19) | 1.575 | (42.00) | .183 | (4.65) | |

NOTES:

1. TERMINALS WILL BE PRESENT IN VOIDED LOCATIONS HOWEVER, PIN WINDOWS WILL BE CLOSED.
2. VOIDS CAN ONLY BE PRESENT IN ONE ROW OF A CONNECTOR.

| | | | | | | | | | | |
|--|--------------------|-----------------------------------|---------------------------------------|---|-----------------------|------------|--------------------------|-------------------|------------------------|--|
| UPDATE REVISION EC NO. S2005-0714 DRAWN BY DRWNAJEE CHKD BY CHKD-BHLOW APPR: PTLIM 2005/10/19 2005/10/19 2005/11/08 | DESCRIPTION REV | QUALITY SYMBOLS ▽=0 ▽=0 | GENERAL TOLERANCES (UNLESS SPECIFIED) | | DIMENSION STYLE IN/MM | | SCALE NTS | DESIGN UNITS INCH | THIRD ANGLE PROJECTION | |
| | | | | | DRAWN BY | DATE | TITLE | | | |
| | | | 4 PLACES ± --- ± --- | | RWB | 1991/07/18 | SALES DRAWING | | | |
| | | | 3 PLACES ± --- ± .010 | | CHECKED BY | DATE | 2MM DUAL ROW | | | |
| | | | 2 PLACES ± 0.25 ± .015 | | JD | 1991/07/18 | VERTICAL RECEPTACLE, SMT | | | |
| | | | 1 PLACE ± 0.38 ± --- | | APPROVED BY | DATE | MOLEX INCORPORATED | | | |
| | | | ANGULAR ± 3 ° | | WAZ | 1991/07/18 | | | | |
| | | | DRAFT WHERE APPLICABLE | | MATERIAL NO. | | DOCUMENT NO. | | SHEET NO. | |
| MUST REMAIN WITHIN DIMENSIONS | | SEE TABLE | | SDA-79109-**** | | 9 OF 9 | | | | |
| | | SIZE A | | THIS DRAWING CONTAINS INFORMATION THAT IS PROPRIETARY TO MOLEX INCORPORATED AND SHOULD NOT BE USED WITHOUT WRITTEN PERMISSION | | | | | | |