

4

3

2

1

THIS DRAWING IS UNPUBLISHED. RELEASED FOR PUBLICATION  
 © COPYRIGHT - BY TYCO ELECTRONICS CORPORATION. ALL RIGHTS RESERVED.

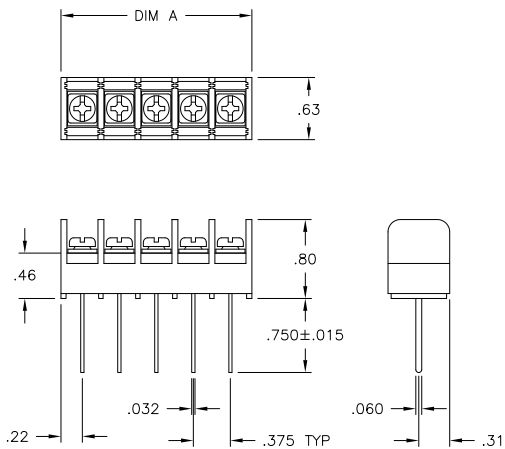
LOC	DIST	REVISIONS					
FT	0	P	LTR	DESCRIPTION	DATE	DWN	APVD
		H		REVISED PER ECO-10-013614	13OCT10	HMR	CR

MATERIAL:  
 HOUSING: THERMOPLASTIC, UL94V-0, BLACK.  
 TERMINALS: BRIGHT TIN OVER COPPER ALLOY.  
 SCREWS: #6-32 STEEL, ZINC PLATING W/ CLEAR CHROMATE.

ELECTRICAL:  
 RATED CURRENT UL/CSA:  
 CLASS C: 20A, 300V.  
 CLASS D: 5A, 600V.  
 WIRE RANGE: 12-22 AWG

MECHANICAL:  
 RECOMMENDED TORQUE: 7 IN-LB.  
 OPERATING TEMP.: 105°C MAX.

△ PRELIMINARY PART NUMBER.



	9.436	25	JC6-W108-25	3-1546703-9
	9.061	24	JC6-W108-24	3-1546703-8
	8.686	23	JC6-W108-23	3-1546703-7
	8.311	22	JC6-W108-22	3-1546703-6
	7.936	21	JC6-W108-21	3-1546703-5
	7.561	20	JC6-W108-20	3-796985-0
	7.186	19	JC6-W108-19	3-1546703-4
	6.811	18	JC6-W108-18	3-1546703-3
	6.436	17	JC6-W108-17	3-1546703-2
	6.061	16	JC6-W108-16	3-1546703-1
	5.686	15	JC6-W108-15	3-1546703-0
	5.311	14	JC6-W108-14	2-1546703-9
	4.936	13	JC6-W108-13	2-1546703-8
SEE FIGURE	4.561	12	JC6-W108-12-198	1776175-1
	4.561	12	JC6-W108-12	2-796985-9
	4.186	11	JC6-W108-11	2-1546703-7
	3.811	10	JC6-W108-10	2-1546703-6
	3.436	9	JC6-W108-09	2-1546703-5
SEE FIGURE	3.811	8	JC6-W108-08-201	1776175-4
	3.061	8	JC6-W108-08	2-1546703-4
SEE FIGURE	2.686	7	JC6-W108-07	2-1546703-3
SEE FIGURE	2.311	6	JC6-W108-06-234	1776175-6
SEE FIGURE	2.311	6	JC6-W108-06-200	1776175-3
SEE FIGURE	2.311	6	JC6-W108-06	2-1546703-2
SEE FIGURE	1.936	5	JC6-W108-05-199	1776175-2
	1.936	5	JC6-W108-05	1-1437666-7
	1.561	4	JC6-W108-04	2-1546703-1
SEE FIGURE	1.186	3	JC6-W108-03-246	1776175-7
SEE FIGURE	1.186	3	JC6-W108-03-231	1776175-5
	1.186	3	JC6-W108-03	1-1437666-6
	.811	2	JC6-W108-02	2-1546703-0
	DIM A	NO OF POS	CATALOG NUMBER	TE PART NO.

THIS DRAWING IS A CONTROLLED DOCUMENT.		DWN S. SCHLEGEL	5/27/03	Tyco Electronics Corporation Harrisburg, PA 17105													
DIMENSIONS: INCHES		CHK S. YODER	5/27/03	Tyco Electronics													
TOLERANCES UNLESS OTHERWISE SPECIFIED:		APVD S. YODER	5/27/03	NAME													
<table border="1"> <tr><td>0 PLC</td><td>± -</td></tr> <tr><td>1 PLC</td><td>± -</td></tr> <tr><td>2 PLC</td><td>± .01</td></tr> <tr><td>3 PLC</td><td>± .005</td></tr> <tr><td>4 PLC</td><td>± -</td></tr> <tr><td>ANGLES</td><td>± -</td></tr> </table>		0 PLC	± -	1 PLC	± -	2 PLC	± .01	3 PLC	± .005	4 PLC	± -	ANGLES	± -	PRODUCT SPEC		JC6-W108-XX ASSEMBLY	
0 PLC	± -																
1 PLC	± -																
2 PLC	± .01																
3 PLC	± .005																
4 PLC	± -																
ANGLES	± -																
MATERIAL		APPLICATION SPEC		RESTRICTED TO													
FINISH		WEIGHT		SIZE CAGE CODE DRAWING NO													
		-		A3 00779 C-1-1437666-6													
CUSTOMER DRAWING				SCALE	SHEET												
				NTS	1 OF 2												
				REV	H												

AMP 1470-19 REV 31MAR2000

4

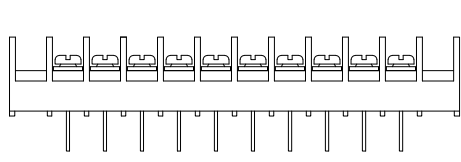
3

2

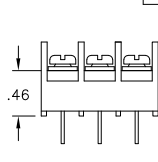
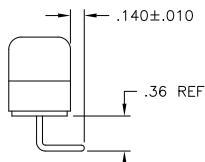
1

THIS DRAWING IS UNPUBLISHED. RELEASED FOR PUBLICATION  
 © COPYRIGHT - BY TYCO ELECTRONICS CORPORATION. ALL RIGHTS RESERVED.

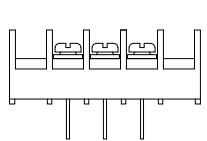
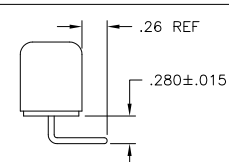
LOC	DIST	REVISIONS				
P	LTR	DESCRIPTION	DATE	DWN	APVD	
FT	0	SEE SHEET 1	-	-	-	



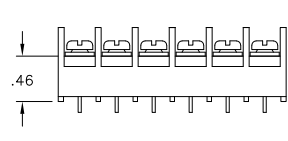
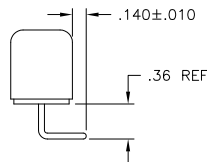
1776175-1



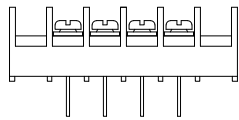
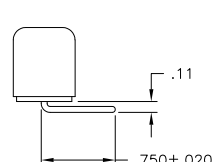
1776175-5



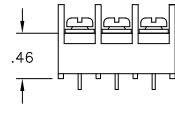
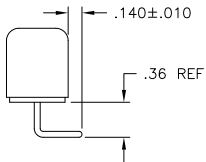
1776175-2



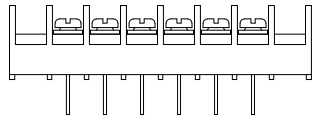
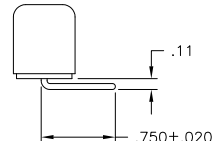
1776175-6



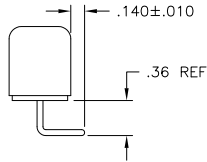
1776175-3



1776175-7



1776175-4



THIS DRAWING IS A CONTROLLED DOCUMENT.		DWN S. SCHLEGEL 5/27/03	Tyco Electronics Corporation Harrisburg, PA 17105	
DIMENSIONS: INCHES		CHK S. YODER 5/27/03	JC6-W108-XX ASSEMBLY	
TOLERANCES UNLESS OTHERWISE SPECIFIED:		APVD S. YODER 5/27/03	RESTRICTED TO	
0 PLC ± -		PRODUCT SPEC	SIZE A3	CAGE CODE 00779
1 PLC ± -		APPLICATION SPEC	DRAWING NO 1-1437666-6	SCALE NTS
2 PLC ± .01		WEIGHT	SHEET 2 of 2	REV H
3 PLC ± .005		CUSTOMER DRAWING		
4 PLC ± -				
ANGLES ± -				
MATERIAL	FINISH			