

4

3

2

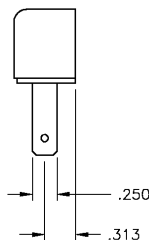
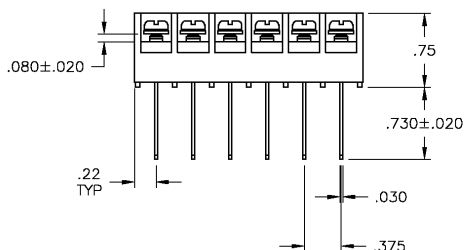
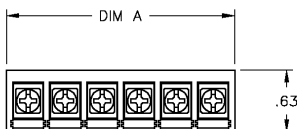
1

THIS DRAWING IS UNPUBLISHED. RELEASED FOR PUBLICATION  
 © COPYRIGHT BY TYCO ELECTRONICS CORPORATION. ALL RIGHTS RESERVED.

LOC	DIST	REVISIONS			
P	LTR	DESCRIPTION	DATE	DWN	APVD
0		REVISED PER 0G3B-0933-03	12/5/03	SS	SRY

**PHYSICAL PROPERTIES:**  
 HOUSING: POLYPROPYLENE, UL94V-0, BLACK.  
 TERMINALS: BRIGHT TIN OVER COPPER ALLOY.  
 SCREWS: #6-32 STEEL, ZINC PLATING W/ CLEAR CHROMATE.  
 PITCH (TERMINAL SPACING): .375"  
 OPERATING TEMP.: 105° C MAX

**ELECTRICAL PROPERTIES:**  
 RATED CURRENT: 20A  
 OPERATING VOLTAGE: 300V  
 WIRE RANGE: 12-22 AWG



THIS PRINT IS  
**PRELIMINARY**  
 PRIOR TO CUSTOMER ORDER  
 CONTACT PRODUCT ENGINEERING  
 BEFORE USING THIS PRINT

1.125	4	BC6-Q108-04	1546868-4
.375	2	BC6-Q108-02	1546868-2
DIM. A	NO. OF POS.	CATALOG NUMBER	TYCO PART NO.

DIMENSIONS:		TOLERANCES UNLESS OTHERWISE SPECIFIED:		THIS DRAWING IS A CONTROLLED DOCUMENT.		DWN		12/5/03	
INCHES				S. SCHLEGEL		CHK		12/5/03	
0 PLC		± -		S. YODER		APVD		12/5/03	
1 PLC		± -		S. YODER		PRODUCT SPEC			
2 PLC		± .01		NAME		SIZE		CAGE CODE	
3 PLC		± .005		BUCHANAN		A3		00779	
4 PLC		± -		Tyco Electronics Corporation		DRAWING NO		1546868	
ANGLES		± -		City, State, Zip		RESTRICTED TO			
MATERIAL		FINISH		BC6-Q108-XX ASSEMBLY		WEIGHT		SCALE	
				-		-		NTS	
				CUSTOMER DRAWING		SHEET		1 OF 1	
						REV		0	