

4

3

2

1

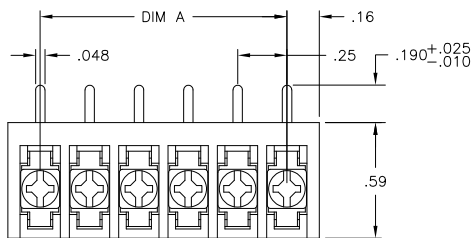
THIS DRAWING IS UNPUBLISHED. RELEASED FOR PUBLICATION
 © COPYRIGHT - BY TYCO ELECTRONICS CORPORATION. ALL RIGHTS RESERVED.

LOC	DIST	REVISIONS				
P	LTR	DESCRIPTION	DATE	DWN	APVD	
FT	0					
E4		REVISED PER ECO-10-008348	29JUL10	HMR	CR	

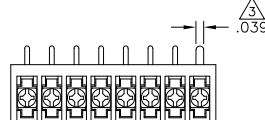
MATERIAL:
 HOUSING: THERMOPLASTIC, UL94V-0, BLACK.
 TERMINAL: BRIGHT TIN PLATED, COPPER ALLOY.
 M3 SCREWS: NICKEL PLATED STEEL.

ELECTRICAL:
 RATED CURRENT: 10A.
 OPERATING VOLTAGE: 300V.
 WIRE RANGE: 16-30 AWG.

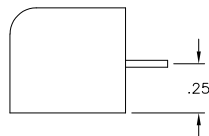
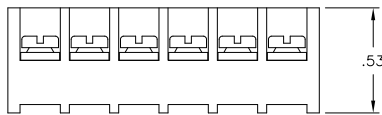
MECHANICAL:
 PITCH (TERMINAL SPACING): .250"
 OPERATING TEMP.: 120°C MAX.



1-1546119-4



3-1546099-2



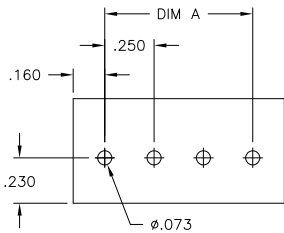
△/△ OBSOLETE

△/△

△/△ OBSOLETE

7.25	30	3PCR-30-006	3-1546099-0
7.00	29	3PCR-29-006	2-1546099-9
6.75	28	3PCR-28-006	2-1546099-8
6.50	27	3PCR-27-006	2-1546099-7
6.25	26	3PCR-26-006	2-1546099-6
6.00	25	3PCR-25-006	2-1546099-5
5.75	24	3PCR-24-006	2-1546099-4
5.50	23	3PCR-23-006	2-1546099-3
5.25	22	3PCR-22-006	2-1546099-2
5.00	21	3PCR-21-006	2-1546099-1
4.75	20	3PCR-20-006	2-1546119-0
4.50	19	3PCR-19-006	1-1546119-9
4.25	18	3PCR-18-006	1-1546099-8
4.00	17	3PCR-17-006	1-1546099-7
3.75	16	3PCR-16-006	1-1546099-6
3.50	15	3PCR-15-006	1-1546099-5
3.25	14	3PCR-14-006	1-1546099-4
3.00	13	3PCR-13-006	1-1546099-3
2.75	12	3PCR-12-006	1-1546119-7
2.50	11	3PCR-11-006	1-1546119-6
2.25	10	3PCR-10-006	1-1546119-5
2.00	9	3PCR-09-256	1-1546119-4
2.00	9	3PCR-09-006	1-1546119-3
1.75	8	3PCR-08-310	3-1546099-2
1.75	8	3PCR-08-006	1-1546119-2
1.50	7	3PCR-07-006	1-1546119-0
1.25	6	3PCR-06-302	3-1546099-1
1.25	6	3PCR-06-006	1-1437646-2
1.00	5	3PCR-05-006	1437646-9
.75	4	3PCR-04-006	1546119-8
.50	3	3PCR-03-006	1546099-1
.25	2	3PCR-02-006	1546119-5

- 1 SEE FIGURE.
- 2 M3 SCREWS BOTTOMED.
- 3 RECOMMENDED PCB HOLE DIAMETER: .090".
- 4 PRELIMINARY PART NUMBER.
- 5 OBSOLETE PARTS: OBSOLETE CIS STREAMLINING PER D.RENAUD/D.SINISI



RECOMMENDED PCB LAYOUT

THIS DRAWING IS A CONTROLLED DOCUMENT.		DWN	S. SCHLEGEL	4/22/03	Tyco Electronics Corporation Harrisburg, Pa 17105-3608	
DIMENSIONS: INCHES		CHK	S. YODER	6/18/02		
TOLERANCES UNLESS OTHERWISE SPECIFIED:		APVD	S. YODER	6/18/02	NAME	
0 PLC	± -	PRODUCT SPEC		3PCR-XX-006 ASSEMBLY		
1 PLC	± -	APPLICATION SPEC		RESTRICTED TO		
2 PLC	± .02	SIZE	A3	CAGE CODE	00779	DRAWING NO
3 PLC	± .010	WEIGHT		C=1437646-9		REV
4 PLC	± -	MATERIAL		CUSTOMER DRAWING		E4
ANGLES	± -	FINISH		SCALE	NTS	SHEET 1 OF 1