

4

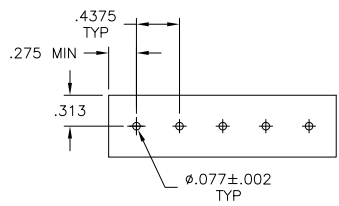
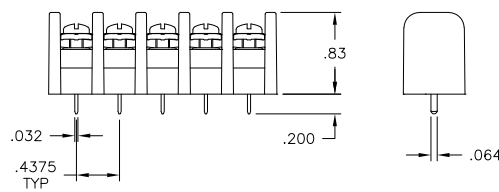
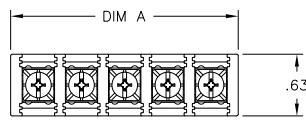
3

2

1

THIS DRAWING IS UNPUBLISHED. RELEASED FOR PUBLICATION  
 © COPYRIGHT - By - ALL RIGHTS RESERVED.

LOC	DIST	REVISIONS				
P	LTR	DESCRIPTION	DATE	DWN	APVD	
FT	0	REVISED PER ECO-11-004917	11MAR11	RK	HMR	



REV	DATE	DESCRIPTION	BY	CHKD
1	11.937	27	SSB7FP270202	2-1546984-7
1	11.500	26	SSB7FP260202	5-1437416-4
1	11.062	25	SSB7FP250202	5-1437416-3
1	10.625	24	SSB7FP240202	2-1546984-4
1	10.187	23	SSB7FP230202	2-1546984-3
1	9.750	22	SSB7FP220202	2-1546984-2
1	9.312	21	SSB7FP210202	2-1546984-1
1	8.875	20	SSB7FP200202	5-1437416-2
1	8.437	19	SSB7FP190202	1-1546984-9
1	8.000	18	SSB7FP18020212	5-1437416-1
1	8.000	18	SSB7FP180202	1-1546984-8
1	7.562	17	SSB7FP170202	5-1437416-0
1	7.125	16	SSB7FP160202	1-1546984-6
1	6.687	15	SSB7FP150202	4-1437416-7
1	6.250	14	SSB7FP140202	3-796602-3
1	5.812	13	SSB7FP130202	1-1546984-3
1	5.375	12	SSB7FP120202	4-1437416-1
1	4.937	11	SSB7FP110202	1-1546561-2
1	4.500	10	SSB7FP100202	3-1437416-5
1	4.062	9	SSB7FP091402	2-1546984-9
6	4.062	9	SSB7FP09140211	2-1546984-8
1	4.062	9	SSB7FP090202	3-1437416-2
1	3.625	8	SSB7FP080202	2-1437416-8
1	3.187	7	SSB7FP070202	3-796602-2
1	2.750	6	SSB7FP060202	2-1437416-2
1	2.312	5	SSB7FP050202	1-1437416-7
1	1.875	4	SSB7FP040202	1-1437416-2
2	1.437	3	SSB7FP0320911	3-1546561-9
1	1.437	3	SSB7FP03020211	1-1546561-6
1	1.437	3	SSB7FP030202	1437416-8
1	1.000	2	SSB7FP020202	1437416-4

MATERIAL:  
 HOUSING: THERMOPLASTIC, UL94V-2, BLACK.  
 TERMINAL: BRASS, PLATED BRIGHT TIN OVER NICKEL.  
 SCREWS: 6-32, STEEL, ZINC AND CHROMATE PLATED <sup>1</sup>  
 OR  
 NICKEL OVER COPPER PLATED <sup>2</sup>

ELECTRICAL:  
 MAXIMUM CURRENT: 20A.  
 OPERATING VOLTAGE: 600V.  
 WIRE RANGE: 12 AWG MAX.  
 ENVIRONMENT:  
 OPERATING TEMP.: -60°C TO +105°C.

RECOMMENDED PCB LAYOUT

THIS DRAWING IS A CONTROLLED DOCUMENT.

DIMENSIONS: INCHES	TOLERANCES UNLESS OTHERWISE SPECIFIED:	DWN S SCHLIGEL 16FEB04					
0 PLC ± -	1 PLC ± -	CHK S YODER 2/16/04					
2 PLC ± .02	3 PLC ± .010	APVD S YODER 2/16/04	NAME				
4 PLC ± -	ANGLES ± 1°	PRODUCT SPEC	SSB7 ASSEMBLY				
MATERIAL	FINISH	APPLICATION SPEC	SIZE A3	CAGE CODE 00779	DRAWING NO C-3-796602-2	RESTRICTED TO	
		WEIGHT	CUSTOMER DRAWING		SCALE NTS	SHEET 1 of 2	REV P

- <sup>3</sup> WHITE INK MARKING, APPROX. AS SHOWN. (SEE PAGE 2)
- <sup>4</sup> PRELIMINARY PART NUMBER.
- <sup>5</sup> OBSOLETE PARTS: OBSOLETE CIS STREAMLINING PER D.RENAUD/D.SINISI
- <sup>6</sup> SPECIAL MARKING SEE DETAIL.

4

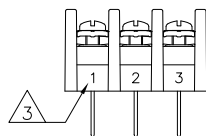
3

2

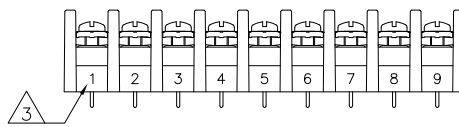
1

THIS DRAWING IS UNPUBLISHED. RELEASED FOR PUBLICATION. ALL RIGHTS RESERVED.

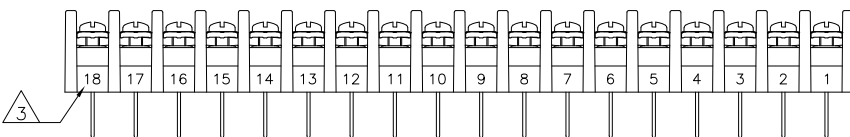
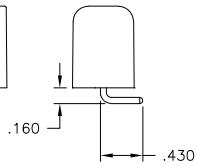
LOC	DIST	REVISIONS					
FT	0	P	LTR	DESCRIPTION	DATE	DWN	APVD
		-		SEE SHEET 1	-	-	-



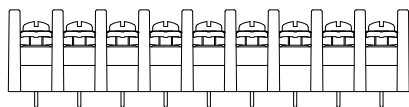
3 OBSOLETE 1546961-6



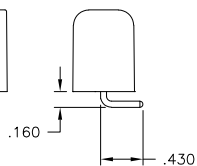
2-1546984-8



5-1437416-1



2-1546984-9



THIS DRAWING IS A CONTROLLED DOCUMENT.		DWN	S SCHLGE	16FEB04	
DIMENSIONS:		CHK	S YODER	2/16/04	
INCHES		APVD	S YODER	2/16/04	
TOLERANCES UNLESS OTHERWISE SPECIFIED:		NAME		SSB7 ASSEMBLY	
<ul style="list-style-type: none"> <li>0. PLC ± -</li> <li>1. PLC ± -</li> <li>2. PLC ± .02</li> <li>3. PLC ± .010</li> <li>4. PLC ± -</li> <li>ANGLES ± 1°</li> </ul>		PRODUCT SPEC			
MATERIAL		APPLICATION SPEC			
FINISH		WEIGHT			
		SIZE	A3	CAGE CODE	00779
		DRAWING NO		C-3-796602-2	
		RESTRICTED TO			
		CUSTOMER DRAWING		SCALE	NTS
		SHEET		2 of 2	
		REV		P	