

4

3

2

1

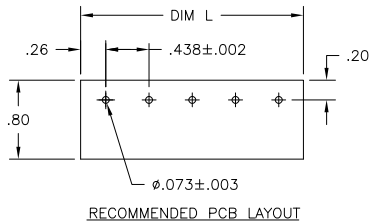
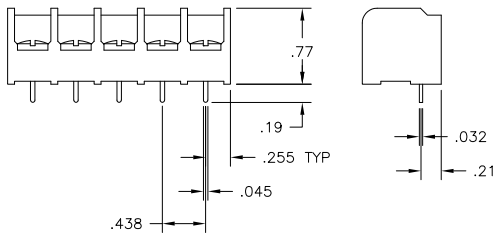
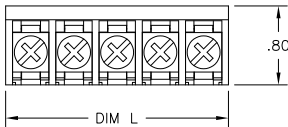
THIS DRAWING IS UNPUBLISHED. RELEASED FOR PUBLICATION  
 © COPYRIGHT BY TYCO ELECTRONICS CORPORATION. ALL INTERNATIONAL RIGHTS RESERVED.

MATERIALS:  
 HOUSING: THERMOPLASTIC, UL94V-0, BLACK.  
 TERMINAL: BRIGHT TIN PLATED COPPER ALLOY.  
 SCREWS: 8-32, ZINC PLATED STEEL.

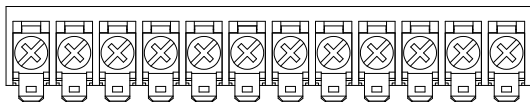
ELECTRICAL:  
 CURRENT RATING: 30A.  
 VOLTAGE RATING: 600V.  
 WIRE RANGE: 10-18 AWG (UL)  
 10-22 AWG (CSA)

MECHANICAL:  
 RECOMMENDED TORQUE: 20 IN.-LB.  
 OPERATING TEMP.: -40°C TO +120°C.

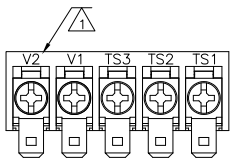
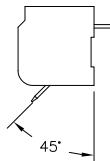
- 1 MARKED WITH WHITE INK.
- 2 OBSOLETE PART NUMBER.
- 3 SCREWS TO BE BOTTOMED



RECOMMENDED PCB LAYOUT

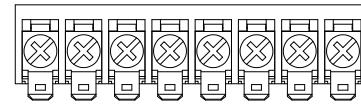


1-1437660-5

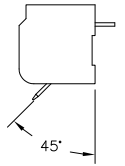


9-1437657-3

LOC	DIST	REVISIONS				
P	LTR	DESCRIPTION	DATE	DWN	APVD	
	F	REVISED PER ECO-09-019330	31AUG09	HMR	CR	



1-1437658-9



2	-	9.260	21	8PCV-21-007	8-1546159-4
-	-	8.823	20	8PCV-20-007	7-1437658-7
-	-	8.385	19	8PCV-19-007	1546565-8
-	-	7.948	18	8PCV-18-007	1546565-7
-	-	7.510	17	8PCV-17-007	1546565-6
-	-	7.073	16	8PCV-16-007	1546565-5
-	-	6.635	15	8PCV-15-007	1546565-4
-	-	6.198	14	8PCV-14-007	7-1546159-9
-	-	5.760	13	8PCV-13-007	5-1437658-6
-	SEE FIGURE	5.323	12	8PCV-12-001-010	1-1546098-2
-	-	5.323	12	8PCV-12-007	4-1437658-7
-	-	4.885	11	8PCV-11-007	4-1437658-1
-	-	4.448	10	8PCV-10-007	7-1546159-2
-	-	4.010	9	8PCV-09-007	1546565-3
2	SEE FIGURE	3.573	8	8PCV-08-001-010	1-1437658-9
-	-	3.573	8	8PCV-08-007	2-1437658-3
-	-	3.135	7	8PCV-07-007	1546565-2
-	-	2.698	6	8PCV-06-007	1437658-1
-	SEE FIGURE	2.260	5	8PCV-05-501	9-1437657-3
-	-	2.260	5	8PCV-05-007	9-1437657-0
-	-	1.823	4	8PCV-04-007	1546565-1
-	-	1.385	4	8PCV-04-003	1546119-3
-	-	1.385	3	8PCV-03-007	7-1437657-0
-	-	.948	2	8PCV-02-007	5-1546159-6

COMMENTS	DIM L REF	NO OF POS	CATALOG NUMBER	TE PART NO
----------	-----------	-----------	----------------	------------

THIS DRAWING IS A CONTROLLED DOCUMENT.

DIMENSIONS: INCHES	TOLERANCES UNLESS OTHERWISE SPECIFIED: 0 PLC ± - 1 PLC ± - 2 PLC ± - 3 PLC ± - 4 PLC ± - ANGLES ± -	DWN S SCHLEGEL 2/25/03 CHK S YODER 10/8/04 APVD S YODER 10/8/04	Tyco Electronics Corporation Harrisburg, PA 17105-3608
MATERIAL	FINISH	NAME	8PCV-XX-007 ASSEMBLY
		SIZE CAGE CODE DRAWING NO	RESTRICTED TO
		A3 00779 C-7-1437657-0	
CUSTOMER DRAWING		SCALE 1:1	SHEET 1 OF 1 REV F