

4

3

2

1

THIS DRAWING IS UNPUBLISHED. RELEASED FOR PUBLICATION
 © COPYRIGHT - By - ALL RIGHTS RESERVED.

LOC	DIST	REVISIONS					
FT	0	P	LTR	DESCRIPTION	DATE	BY	APPD
		N4	REVISED PER	ECO-11-004820	11MAR11	RK	HMR

MATERIAL:
 HOUSING: THERMOPLASTIC, UL94V-2, BLACK.
 TERMINAL: BRASS, BRIGHT TIN PLATED.
 SCREWS: 6-32, STEEL, ZINC PLATED W/ CLEAR
 CHROMATE, UNLESS OTHERWISE SPECIFIED.
 ELECTRICAL:
 MAXIMUM CURRENT: 20A.
 OPERATING VOLTAGE: 600V.
 WIRE RANGE: 12-22 AWG MAX.
 ENVIRONMENT:
 OPERATING TEMP.: -60°C TO +105°C.

- △ SCREWS ARE NICKEL PLATED BRASS.
- △ INK MARKED AS SHOWN.
- △ SEE FIGURE.
- △ PRELIMINARY PART NUMBER.
- △ OBSOLETE PARTS: OBSOLETE CIS STREAMLINING PER D.RENAUD/D.SINIS)

QTY	DESCRIPTION	REV	DATE	BY	APPD	NO. OF POS.	CATALOG NUMBER	PART NUMBER
4.375	4.937	-	9	-	-	-	SSB7CF090325	5-1546963-3
4.375	4.937	-	-	-	-	-	SSB7CG090304	3-1546963-9
4.375	4.937	-	-	-	-	-	SSB7CG090301	7-1546963-3
3.937	4.500	-	8	-	-	-	SSB7CG080334	5-1546963-4
3.937	4.500	-	-	-	-	-	SSB7CG080301	1546963-8
3.500	4.062	-	7	3	-	-	SSB7N2019	3-1546963-8
3.500	4.062	-	7	7	-	-	SSB7N2021	3-1546963-5
3.500	4.062	-	7	2	-	-	SSB7N2017	3-1546963-2
3.500	4.062	-	7	-	-	-	SSB7N2018	3-1546963-3
3.500	4.062	-	-	-	-	-	SSB7CG070301	1546963-7
3.062	3.625	-	6	-	-	6	SSB7CG060334	5-1546963-1
3.062	3.625	-	6	-	-	2	SSB7N2016	3-1546963-1
3.062	3.625	-	6	-	-	6	SSB7CG060326	2-1546561-6
3.062	3.625	-	-	-	-	-	SSB7CG060301	1546963-6
2.625	3.187	-	5	-	-	-	SSB7CG050322	2-1546963-6
2.625	3.187	-	5	-	-	-	SSB7CG050320	5-1546963-2
2.625	3.187	-	-	-	-	5	SSB7CG050345	4-1546963-7
2.625	3.187	-	5	-	-	-	SSB7CF05032211	4-1546963-6
2.625	3.187	-	5	-	-	5	SSB7CF05033611	4-1546963-4
2.625	3.187	-	5	-	-	-	SSB7N2023	3-1546963-7
2.625	3.187	-	5	-	-	-	SSB7N2022	3-1546963-6
2.187	2.750	-	-	-	-	4	SSB7CG040321	5-1546963-7
2.187	2.750	-	4	-	-	4	SSB7CG040334	5-1546963-5
3.500	4.062	-	4	-	-	1	SSB7CG04032224	4-1546963-9
2.187	2.750	-	-	-	-	4	SSB7CF040321	2-1546561-8
2.187	2.750	-	4	-	-	4	SSB7CG040326	2-1546561-5
2.187	2.750	-	-	-	-	-	SSB7CG040301	1546963-4
1.750	2.312	-	3	-	-	3	SSB7CF0303211	5-1546963-6
1.750	2.312	-	3	-	-	-	SSB7CF030325	4-1546963-8
1.750	2.312	-	3	-	-	-	SSB7CG030325	4-1546963-5
1.750	2.312	-	3	3	-	3	SSB7CF030328	2-1546963-9
1.750	2.312	-	-	-	-	3	SSB7CG03032111	2-1546561-7
1.750	2.312	-	3	-	-	3	SSB7CG030326	2-1546561-4
1.750	2.312	-	-	-	-	-	SSB7CF030304	1-1546561-3
1.750	2.312	-	-	-	-	3	SSB7CG030321	8-796602-9
1.750	2.312	-	-	-	-	3	SSB7CF03035611	8-796602-0
1.750	2.312	-	3	-	-	-	SSB7CG0303124	1546963-9
1.750	2.312	-	-	-	-	-	SSB7CG030301	1546963-3
1.312	1.875	-	2	-	-	2	SSB7CG020334	5-1546963-0
1.312	1.875	-	2	2	-	2	SSB7CG020328	4-1546963-2
1.312	1.875	-	2	2	-	2	SSB7CF020328	4-1546963-1
1.312	1.875	-	2	2	-	2	SSB7CG020326	6-1437415-6
1.312	1.875	-	-	-	-	2	SSB7CG020321	3-1546561-1
1.312	1.875	-	-	-	-	-	SSB7CG020301	1546963-2
.875	1.437	-	1	-	-	1	SSB7CG010326	3-1546963-0
.875	1.437	-	-	-	-	-	SSB7CG010301	1546963-1

DIM B	DIM A	JUMPER	250 QC TAB 90° BEND SOL SIDED	250 QC TAB 90° BEND DRL SIDED	250 QC TAB STRAIGHT DRL SIDED	250 QC TAB STRAIGHT SOL SIDED	250 QC TAB 45° BEND SOL SIDED	187 QC TAB STRAIGHT SOL SIDED	250 QC TAB 45° BEND DRL SIDED	187 QC TAB 45° BEND SOL SIDED	187 QC TAB 90° BEND SOL SIDED	SSB7 BUSHING	NO. OF POS.	CATALOG NUMBER	PART NUMBER
			⑩	⑨	⑧	⑦	⑥	⑤	④	③	②	①			

THIS DRAWING IS A CONTROLLED DOCUMENT.

DR: S. SCHLIGEL 3/5/04	TE Connectivity
OK: S. YODER 3/5/04	
APPD: S. YODER 3/5/04	
PRODUCT SPEC: SSB7CGXX0301	
APPLICATION SPEC: A2	SIZE: 00779
WEIGHT: C-8	DATE: 00779
CUSTOMER DRAWING	SCALE: NTS
	SHEET: 1 of 4
	REV: N4

B-796602-0

B

A

4

3

2

1

THIS DRAWING IS UNPUBLISHED. RELEASED FOR PUBLICATION
 © COPYRIGHT - By - ALL RIGHTS RESERVED.

LOC	DIST	REVISIONS					
FT	0	P	LTR	DESCRIPTION	DATE	BY	APPD
-	-	-	-	SEE SHEET 1	-	-	-

SELECT LOAD CHART

9,10	1-8	1-8	9,10	9,10	1-8	1-8	10	SSB7N2030	5-1546963-8	
1-8	9,10	-	-	2,5,6,10	-	1,7	-	10	SSB7N2025	4-1546963-3
ALL	ALL	2,3,4	-	-	-	-	-	7	SSB7N2019	3-1546963-8
ALL	ALL	3,4	-	-	-	-	-	7	SSB7N2017	3-1546963-2
-	-	ALL	-	-	-	2,4	-	6	SSB7N2016	3-1546963-1
-	1,3,5,7	-	-	1	-	-	-	4	SSB7CG04032224	4-1546963-9

250 QC TAB 90° BEND SQL SIDED	250 QC TAB 90° BEND DBL SIDED	250 QC TAB STRAIGHT DBL SIDED	250 QC TAB STRAIGHT SQL SIDED	250 QC TAB 45° BEND SQL SIDED	187 QC TAB STRAIGHT SQL SIDED	250 QC TAB 45° BEND DBL SIDED	187 QC TAB 45° BEND SQL SIDED	187 QC TAB 90° BEND SQL SIDED	NO. OF POS.	CATALOG NUMBER	PART NUMBER
⑩	⑨	⑧	⑦	⑥	⑤	④	③	②			
POSITIONS LOADED											

11.375	11.937	-	-	-	-	-	-	-	-	-	YES	25	SSB70G250301	2-1546963-5
10.937	11.500	-	-	-	-	-	-	-	-	-	YES	24	SSB70G240301	2-1546963-4
10.500	11.062	-	-	-	-	-	-	-	-	-	YES	23	SSB70G230301	2-1546963-3
10.062	10.625	-	-	-	-	-	-	-	-	-	YES	22	SSB70G220304	6-1546963-1
10.062	10.625	-	-	-	-	-	-	-	-	-	YES	22	SSB70G220301	2-1546963-2
9.625	10.187	-	-	-	-	-	-	-	-	-	YES	21	SSB70G210301	2-1546963-1
9.187	9.750	-	-	-	-	-	-	-	-	-	YES	20	SSB70G200301	2-1546963-0
8.750	9.312	-	-	-	-	-	-	-	-	-	YES	19	SSB7CG190301	1-1546963-9
8.313	8.875	-	-	-	-	-	-	-	-	-	YES	18	SSB7CG180301	1-1546963-8
7.875	8.437	-	-	-	-	-	-	-	-	-	YES	17	SSB7CG170301	1-1546963-7
7.437	8.000	-	-	-	-	-	-	-	-	-	YES	16	SSB7CG160301	1-1546963-6
7.000	7.562	-	-	-	-	-	-	-	-	-	YES	15	SSB7CG150301	1-1546963-5
6.562	7.125	-	-	14	-	-	-	14	-	-	YES	14	SSB7N2020	3-1546963-4
6.562	7.125	-	-	-	-	-	-	-	-	-	YES	14	SSB7CG140301	7-1437415-6
6.125	6.687	-	-	-	-	-	-	-	-	-	YES	13	SSB7CG130301	1-1546963-3
5.687	6.250	-	-	-	-	-	-	-	-	-	YES	12	SSB7CG120301	1-1546963-2
5.250	5.812	-	-	-	11	11	-	-	-	-	YES	11	SSB7CG110329	1-1546963-6
5.250	5.812	-	-	-	-	-	-	-	-	-	YES	11	SSB7CG110301	1-1546963-1
4.812	5.375	-	2	8	8	2	2	8	-	-	YES	10	SSB7N2030	5-1546963-8
4.812	5.375	-	2	8	-	-	4	-	2	-	NO	10	SSB7N2025	4-1546963-3
4.812	5.375	-	-	-	-	-	-	-	-	-	YES	10	SSB7CG100301	1-1546963-0

DIM B		DIM A		JUMPER	250 QC TAB 90° BEND SQL SIDED	250 QC TAB 90° BEND DBL SIDED	250 QC TAB STRAIGHT DBL SIDED	250 QC TAB STRAIGHT SQL SIDED	250 QC TAB 45° BEND SQL SIDED	187 QC TAB STRAIGHT SQL SIDED	250 QC TAB 45° BEND DBL SIDED	187 QC TAB 45° BEND SQL SIDED	187 QC TAB 90° BEND SQL SIDED	SSB7 BUSHING	NO. OF POS.	CATALOG NUMBER	PART NUMBER
					⑩	⑨	⑧	⑦	⑥	⑤	④	③	②	①			
QUANTITIES																	

THIS DRAWING IS A CONTROLLED DOCUMENT.		DR: S. SCHLIGEL	3/5/04
DIMENSIONS: INCHES		OK: S. YODER	3/5/04
		APPD: S. YODER	3/5/04
MATERIAL: -		PRODUCT SPEC: -	NAME: -
FINISH: -		APPLICATION SPEC: -	SIZE: A2
		WEIGHT: -	CAGE CODE: C-8
			DRAWING NO: 8-796602-0
			RESTRICTED TO: -
			CUSTOMER DRAWING
			SCALE: NTS
			SHEET: 2 of 4
			REV: N4

4

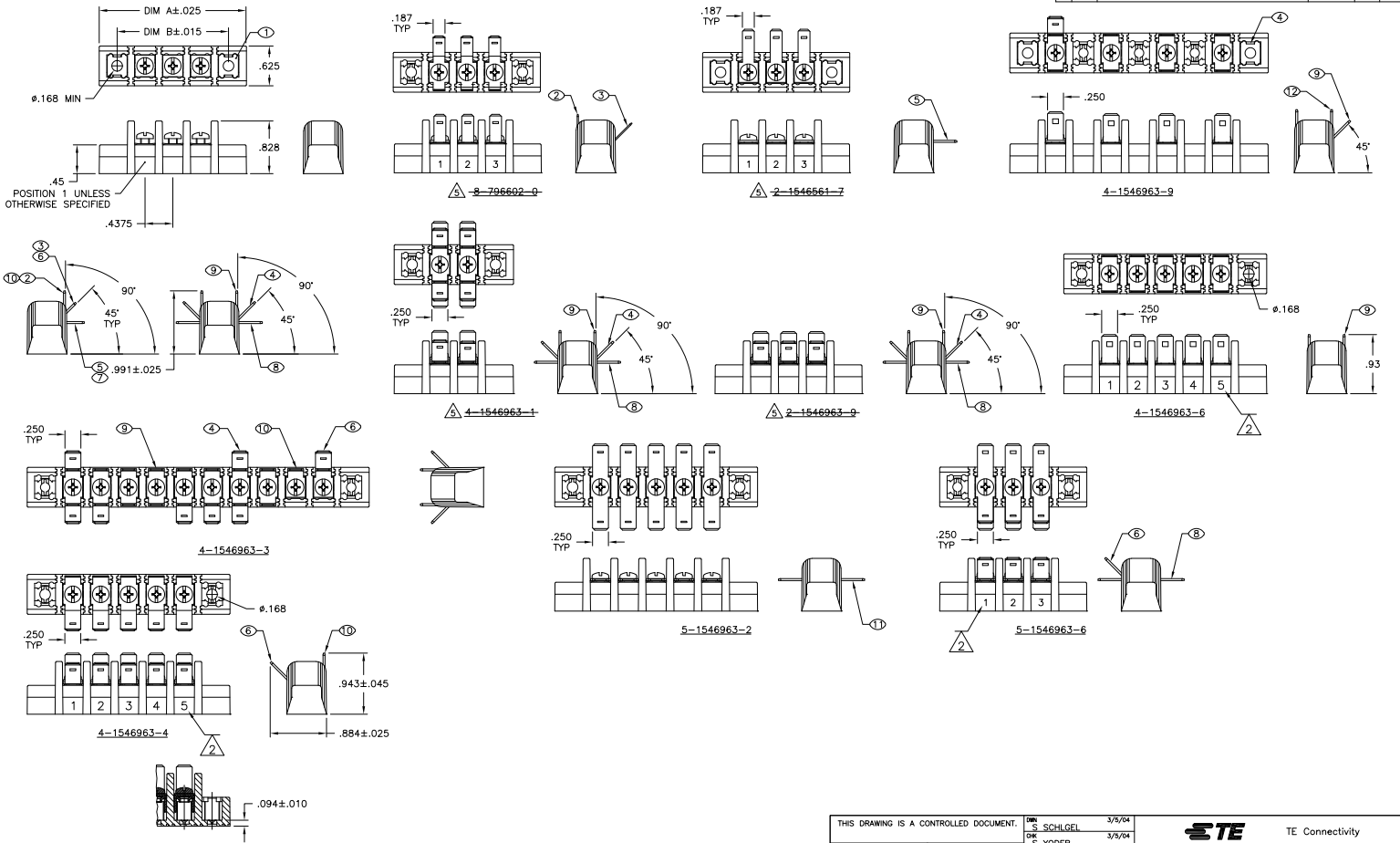
3

2

1

THIS DRAWING IS UNPUBLISHED. RELEASED FOR PUBLICATION
 © COPYRIGHT - BY - ALL RIGHTS RESERVED.

LOC	DIST	REVISIONS					
FT	0	P	LTR	DESCRIPTION	DATE	BY	APPD
		-	-	SEE SHEET 1	-	-	-



THIS DRAWING IS A CONTROLLED DOCUMENT.		BY: S. SCHLIGEL 3/5/04	
DIMENSIONS: INCHES		OK: S. YODER 3/5/04	
OTHER DIMENSIONS: MILLIMETERS		APPD: S. YODER 3/5/04	NAME: SSB7CGXX0301
0 PLC ± .010 1 PLC ± .010 2 PLC ± .010 3 PLC ± .010 4 PLC ± .010 ANGLES ± .1° FINISH -		APPLICATION SPEC: -	RESTRICTED TO: -
MATERIAL: -		WEIGHT: -	SIZE: A2
		CAGE CODE: 8-796602-0	DRAWING NO: 00779
		CUSTOMER DRAWING	SCALE: NTS
			SHEET: 3 of 4
			REV: N4

4

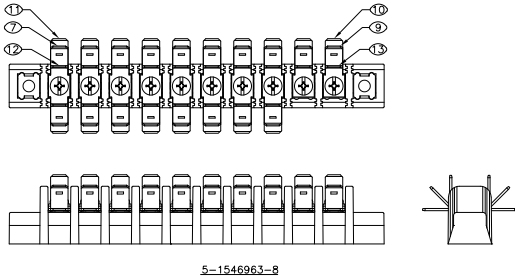
3

2

1

THIS DRAWING IS UNPUBLISHED. RELEASED FOR PUBLICATION
 © COPYRIGHT - By - ALL RIGHTS RESERVED.

LOC	DIST	REVISIONS		
P	LTR	DESCRIPTION	DATE	BY
FT	0	SEE SHEET 1	-	-



5-1546963-8

THIS DRAWING IS A CONTROLLED DOCUMENT.		DRN	S. SCHLIGEL	3/5/04																		
DIMENSIONS:		OK	S. YODER	3/5/04																		
INCHES		APD	S. YODER	3/5/04																		
OTHER DIMENSIONS UNLESS OTHERWISE SPECIFIED.		NAME																				
<table border="1"> <tr> <td>0</td><td>PLC</td><td>± .00</td></tr> <tr> <td>1</td><td>PLC</td><td>± .00</td></tr> <tr> <td>2</td><td>PLC</td><td>± .00</td></tr> <tr> <td>3</td><td>PLC</td><td>± .010</td></tr> <tr> <td>4</td><td>PLC</td><td>± .00</td></tr> <tr> <td colspan="2">ANGLES</td><td>± .1°</td></tr> </table>		0	PLC	± .00	1	PLC	± .00	2	PLC	± .00	3	PLC	± .010	4	PLC	± .00	ANGLES		± .1°	APPLICATION SPEC	SSB7CGXX0301	
0	PLC	± .00																				
1	PLC	± .00																				
2	PLC	± .00																				
3	PLC	± .010																				
4	PLC	± .00																				
ANGLES		± .1°																				
MATERIAL	FINISH	WEIGHT	SIZE	CAGE CODE	DRAWING NO.	RESTRICTED TO																
-	-	-	A2	00779	C-8-796602-0	-																
CUSTOMER DRAWING			SCALE	NTS	SHEET	4 of 4																
					REV	N4																

1471-9 (3/11)

B-796602-0

A