

4

3

2

1

THIS DRAWING IS UNPUBLISHED.

RELEASED FOR PUBLICATION

ALL RIGHTS RESERVED.

COPYRIGHT - By -

LOC  
FTDIST  
0

## REVISIONS

P	LTR	DESCRIPTION	DATE	DWN	APVD
F2		REVISED PER ECO-11-004820	11MAR11	RK	HMR

## MATERIALS:

HOUSING: THERMOPLASTIC, UL94V-0, BLACK.  
TERMINAL: COPPER ALLOY, PLATING  
BRIGHT TIN OVER NICKEL.  
SCREWS: 8-32 ZINC PLATED STEEL.

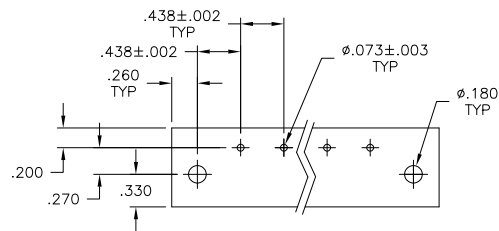
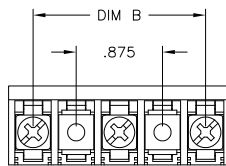
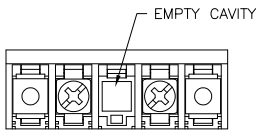
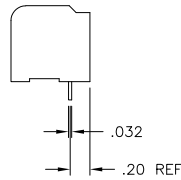
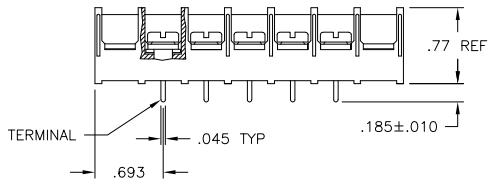
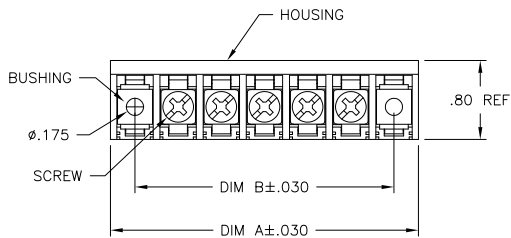
## ELECTRICAL:

CURRENT RATING: 30A  
VOLTAGE RATING: 600V  
WIRE RANGE: 10-18 AWG (UL)  
10-22 AWG (CSA)

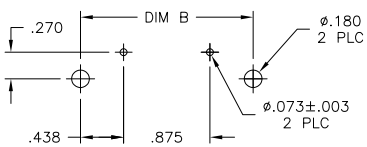
## MECHANICAL:

RECOMMENDED TORQUE: 20 IN-LB.  
OPERATING TEMP.: -40°C TO +120°C.

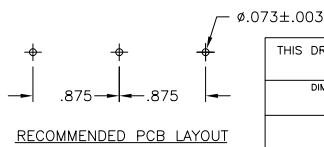
1 SCREWS TO BE BOTTOMED.



RECOMMENDED PCB LAYOUT



RECOMMENDED PCB LAYOUT



RECOMMENDED PCB LAYOUT

THIS DRAWING IS A CONTROLLED DOCUMENT.

DIMENSIONS: INCHES

TOLERANCES UNLESS OTHERWISE SPECIFIED:

0 PLC ± -

1 PLC ± -

2 PLC ± .01

3 PLC ± .005

4 PLC ± -

ANGLES ± 1°

MATERIAL -

FINISH -

DWN S SCHLEGEL 2/25/03

CHK H WAKEEM 2/25/03

APVD H WAKEEM 2/25/03

PRODUCT SPEC

APPLICATION SPEC

WEIGHT -

CUSTOMER DRAWING



TE Connectivity

NAME

8PCV-XX-008 ASSEMBLY

SIZE CAGE CODE DRAWING NO RESTRICTED TO

A3 00779 C-7-1437657-1 -

SCALE 1:1 SHEET 1 OF 2 REV F2

4

3

2

1

THIS DRAWING IS UNPUBLISHED.

RELEASED FOR PUBLICATION

ALL RIGHTS RESERVED.

COPYRIGHT - By -

LOC

DIST

FT

0


REVISIONS

P	LTR	DESCRIPTION	DATE	DWN	APVD
-	-	SEE SHEET 1	-	-	-

8.312	8.822	18	8PCV-18-008	1-1546570-8
7.875	8.385	17	8PCV-17-008	1-1546570-7
7.437	7.947	16	8PCV-16-008	1-1546570-6
7.000	7.510	15	8PCV-15-008	1-1546570-5
6.562	7.072	14	8PCV-14-008	1-1546570-4
6.125	6.635	13	8PCV-13-008	1-1546570-3
5.687	6.197	12	8PCV-12-008	7-1546159-6
5.250	5.760	11	8PCV-11-008	1-1546570-1
4.812	5.322	10	8PCV-10-008	7-1546159-3
4.375	4.885	9	8PCV-09-008	3-796615-1
3.937	4.447	8	8PCV-08-008	2-796615-9
3.500	4.010	7	8PCV-07-008	3-796615-0
3.062	3.572	6	8PCV-06-008	1437658-2
2.625	3.135	5	8PCV-05-008	9-1437657-1
2.187	2.697	4	8PCV-04-008	8-1437657-1
1.750	2.260	3	8PCV-03-534	7-1437657-3
1.750	2.260	3	8PCV-03-008	7-1437657-1
1.312	1.822	2	8PCV-02-SPCL	1546156-1
1.312	1.822	2	8PCV-02-008	1-1437660-6
DIM B	DIM A	NO OF POS	CATALOG NUMBER	PART NO

SEE FIGURE

SEE FIGURE

THIS DRAWING IS A CONTROLLED DOCUMENT.		DWN S SCHLEGEL 2/25/03	 TE Connectivity	
DIMENSIONS: INCHES		CHK H WAKEEM 2/25/03		
TOLERANCES UNLESS OTHERWISE SPECIFIED:		APVD H WAKEEM 2/25/03	NAME	
0 PLC ± -		PRODUCT SPEC	8PCV-XX-008 ASSEMBLY	
1 PLC ± -		APPLICATION SPEC	RESTRICTED TO	
2 PLC ± .01		WEIGHT	SIZE CAGE CODE DRAWING NO	
3 PLC ± .005		A300779	7-1437657-1	
4 PLC ± -			-	
ANGLES ± 1°		CUSTOMER DRAWING		
MATERIAL		SCALE 1:1 SHEET 2 OF 2 REV F2		
FINISH				