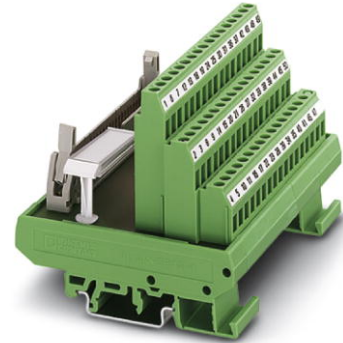


FLKMS 60

Order No.: 2281607

The illustration shows a 50-pos. version



<http://eshop.phoenixcontact.de/phoenix/treeViewClick.do?UID=2281607>

VARIOFACE module, with screw connection and flat-ribbon cable plug connector, for mounting on NS 32 or NS 35/7.5, with pin strip and short and long locking latches for socket strips. 60-pos.

Commercial data	
EAN	4017918054854
Pack	2 pcs.
Customs tariff	85369010
Weight/Piece	0.29 KG
Catalog page information	Page 243 (IF-2007)

Product notes

WEEE/RoHS-compliant since:
07/13/2006



<http://www.download.phoenixcontact.com>
Please note that the data given here has been taken from the online catalog. For comprehensive information and data, please refer to the user documentation. The General Terms and Conditions of Use apply to Internet downloads.

Technical data	
General data	
Nominal voltage U_N	< 50 V AC
	60 V DC
Max. current carrying capacity per branch	1 A
Number of positions	60

Width	112.5 mm
Height	72 mm
Depth	77 mm
Ambient temperature (operation)	-20 °C ... 50 °C
Ambient temperature (storage/transport)	-20 °C ... 70 °C
Test voltage	500 V (50 Hz, 1 min.)
Mounting position	Any
Standards/regulations	IEC 60664
	DIN EN 50178
	IEC 62103

Connection data

Connection 1	PCB connection
Connection in acc. with standard	IEC / EN
Type of connection	Screw connection
Conductor cross section solid min.	0.2 mm ²
Conductor cross section solid max.	4 mm ²
Conductor cross section stranded min.	0.2 mm ²
Conductor cross section stranded max.	2.5 mm ²
Conductor cross section AWG/kcmil min.	24
Conductor cross section AWG/kcmil max	12
Stripping length	8 mm
Screw thread	M3
Connection 2	Flat-ribbon cable connection
Type of connection	Flat-ribbon cable plug connector in acc. with IEC 60603-13
Number of positions	60

Certificates / Approvals

Certification

GOST

Address

PHOENIX CONTACT Inc., USA
586 Fulling Mill Road
Middletown, PA 17057, USA
Phone (800) 888-7388
Fax (717) 944-1625
<http://www.phoenixcon.com>



© 2010 Phoenix Contact
Technical modifications reserved;