

THIS DRAWING IS UNPUBLISHED.
 © COPYRIGHT BY TYCO ELECTRONICS CORPORATION. ALL INTERNATIONAL RIGHTS RESERVED.

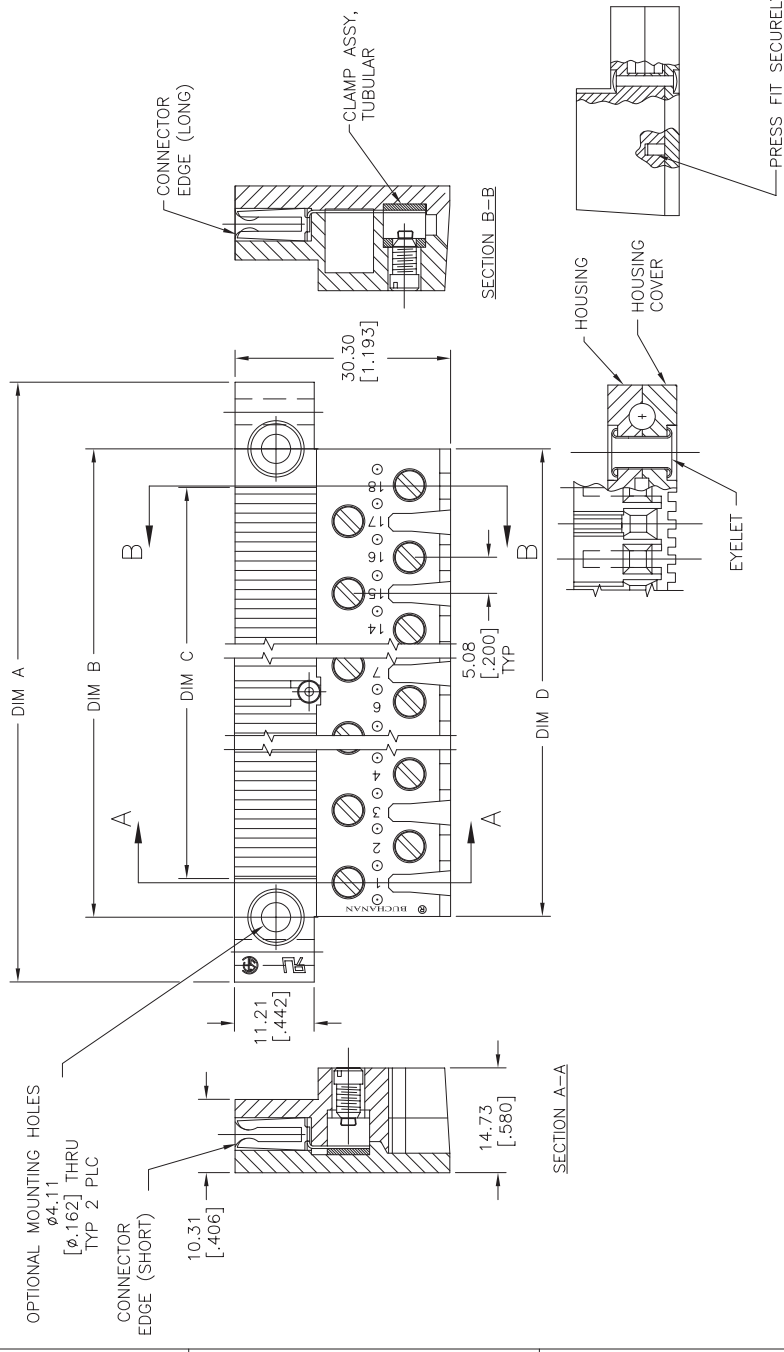
LOC	DIST	REV	DATE	BY	APPD
		E2	15JUL09	HMR	CR
REVISIONS		DESCRIPTION			
		REVISED PER ECO-09-016430			

MATERIAL:
 HOUSING : POLYESTER UL94V-0
 PC CONTACT : BRASS WITH TIN OR GOLD OVER NI.
 TUBULAR CONTACT : BRASS
 SCREW : ZINC PLATED STEEL

MECHANICAL PROPERTIES:
 SCREW SIZE : #6-32
 TIGHTENING TORQUE : 5-8 IN.-LBS.
 BOARD INSERTION FORCE : 5.6 OZ. PER CKT.
 BOARD SEPARATION FORCE : 1.8 OZ. PER CKT.

ELECTRICAL PROPERTIES:
 MAX. CURRENT : 10A
 OPERATING VOLTAGE : 250V
 WIRE RANGE : 1 OR 2 #18 SOL/STR

ENVIRONMENTAL PROPERTIES:
 OPERATING TEMPERATURE : -65°C TO +140°C



3.200	2.920	3.200	3.950	TIN	15	PCB3A15S	9-1437410-6
3.812	3.520	3.812	4.550	TIN	18	PCB3A18S	1437411-2
1.400	1.120	1.400	2.150	TIN	6	PCB3A06S	8-1437410-8
DIM D	DIM C BOARD WIDTH	DIM B	DIM A	CONTACT FINISH	NO OF POSITION	CATALOG NUMBER	PART NUMBER

THIS DRAWING IS A CONTROLLED DOCUMENT.

OK BY: RAGHAVENDRA
 DATE: 04SEP2008

APPROVED BY: MACE
 DATE: 04SEP2008

NAME: SAM MACE

PRODUCT SPEC: APPLICATION SPEC

WEIGHT: -

CUSTOMER DRAWING: A2 00779

SCALE: 2:1

SHEET: 1 of 1

REV: E2

TYCO ELECTRONICS CORPORATION
 HARRISBURG, PA 17105-3608

PCB3A06S=0.200 TERM BLK

RESTRICTED TO