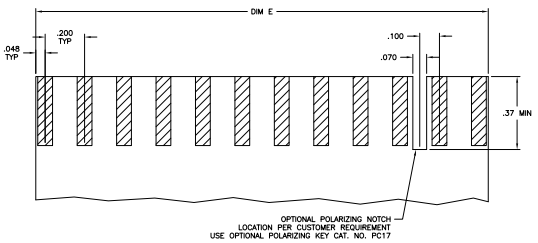
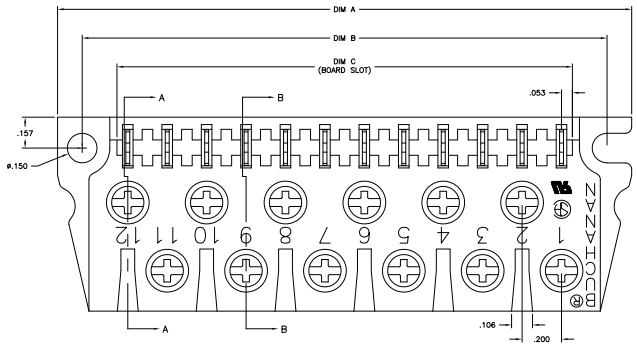
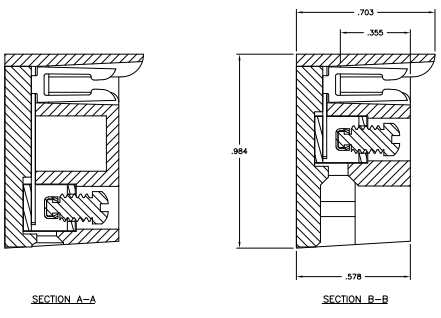


THIS DRAWING IS UNPUBLISHED
 ALL RIGHTS RESERVED

REV	DATE	DESCRIPTION	BY	CHK	APP
0					
1		REVISED PER ECD-11-00927	11MM11	RK	HMR

NOTES:
 MATERIAL:
 HOUSING: POLYESTER, UL94V-0, WHITE.
 TUBULAR CONTACTS: BRASS.
 PC CONTACT: PHOSPHOR BRONZE, BRIGHT TIN PLATE.
 SCREW: 6-32 STEEL, ZINC CHROMATE FINISH.
 CLAMP: BRASS.
 MECHANICAL:
 PITCH: .200"
 WIRE STRIP LENGTH: .25"
 RECOMMENDED TIGHTENING TORQUE: 5-8 IN-LBS.
 BOARD INSERTION FORCE: 5.6 OZ. PER CKT.
 BOARD SEPARATION FORCE: 1.6 OZ. PER CKT.
 ELECTRICAL:
 MAX CURRENT: 10A.
 OPERATING VOLTAGE: 250V.
 DIELECTRIC WITHSTAND: 2500V.
 WIRE RANGE: #12 STRANDED ONLY.
 INSULATION RESISTANCE:
 CONTACT RESISTANCE:
 ENVIRONMENTAL:
 OPERATING TEMP.: -65°C TO +140°C.



DIM E	DIM C	DIM B	DIM A	NO. OF POS.	CATALOG NUMBER	PART NUMBER
7.095	7.110	7.470	7.720	36	PCB1A36S	1-1437410-7
5.895	5.910	6.270	6.520	30	PCB1A30S	1-1437410-5
4.695	4.710	5.070	5.320	24	PCB1A24S	1-1437410-3
3.495	3.510	3.870	4.120	18	PCB1A18S	1-1437410-1
2.295	2.310	2.670	2.920	12	PCB1A12S	1437410-9

THIS DRAWING IS A CONTROLLED DOCUMENT.

TE Connectivity

PCB1A ASSEMBLY
 TIN PLATE

DATE: 00779
 DRAWING NO: 1437410-9

CUSTOMER DRAWING