

4

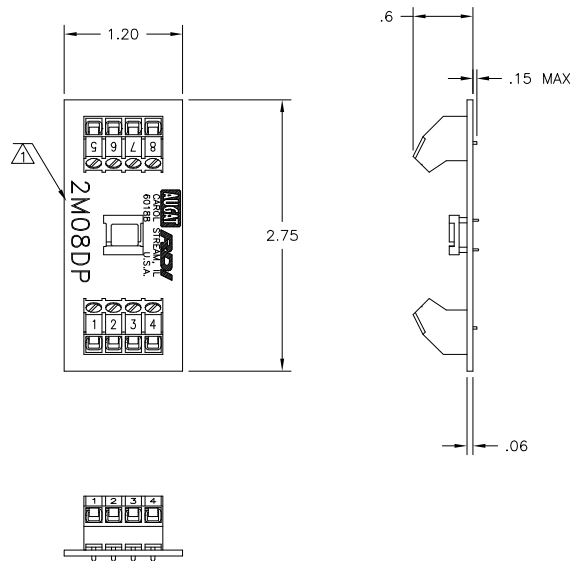
3

2

1

THIS DRAWING IS UNPUBLISHED. RELEASED FOR PUBLICATION
 © COPYRIGHT - BY TYCO ELECTRONICS CORPORATION. ALL RIGHTS RESERVED.

LOC	DIST	REVISIONS				
P	LTR	DESCRIPTION	DATE	DWN	APVD	
	B	REVISED PER ECO-05-10413	9/29/05	SS	SRY	



DIP SOCKET:
 MATERIALS:
 HOUSING: THERMOPLASTIC POLYESTER, 94V-0.
 CONTACTS: COPPER ALLOY, GOLD PLATED.

TERMINAL BLOCK:
 MATERIALS:
 HOUSING: THERMOPLASTIC NYLON, BLACK, 94V-0.
 TERMINALS: COPPER ALLOY, TIN PLATED.
 SCREWS: 3M, BRASS, NICKEL PLATED

ELECTRICAL:
 RATING: 10A, 300V(UL).

MECHANICAL:
 WIRE RANGE: 14-22 AWG.

MOUNTING:
 MATERIALS:
 MOUNTING: 2TK2 AND 2TK2D SERIES SNAPTRACK,
 (SOLD SEPARATELY).

NOTES:
 ⚠ CATALOG NUMBER MARKED HERE.
 ⚠ CONTAINS NO TIN-LEAD PLATING.

⚠ 2M08DPL	1776599-1
2M08DP	1437684-2
PART NUMBER	PART NUMBER

THIS DRAWING IS A CONTROLLED DOCUMENT.		DWN	M.S. FEHER	25MAR2004	 Tyco Electronics Corporation Harrisburg, PA 17105-3608
DIMENSIONS:		CHK	S. YODER	25MAR2004	
INCHES		APVD	S. YODER	25MAR2004	
TOLERANCES UNLESS OTHERWISE SPECIFIED:		NAME	2M08DP ASSEMBLY		
0 PLC	± -	PRODUCT SPEC	-		
1 PLC	± .1	APPLICATION SPEC	-		
2 PLC	± .01	WEIGHT	-		
3 PLC	± -	CUSTOMER DRAWING	-		
4 PLC	± -	SCALE	NTS		
ANGLES	± -	SHEET	1 of 1		
MATERIAL	FINISH	RESTRICTED TO	-		
		REV	B		