

4

3

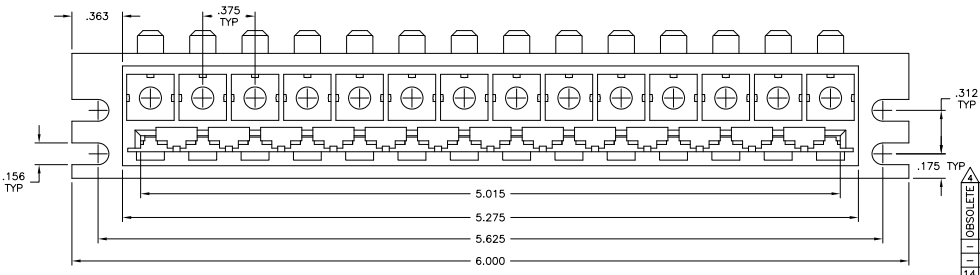
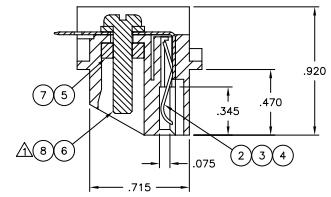
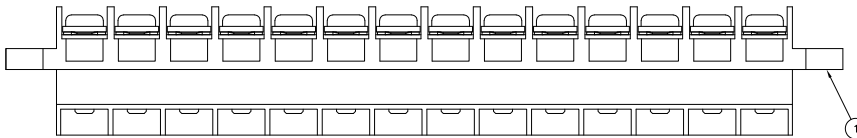
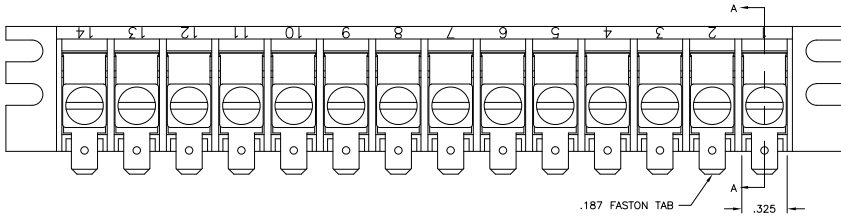
2

1

THIS DRAWING IS UNPUBLISHED. RELEASED FOR PUBLICATION
 © COPYRIGHT BY TYCO ELECTRONICS CORPORATION. ALL RIGHTS RESERVED.

LOC		DIBT		REVISIONS			
FT	0	P	LTR	DESCRIPTION	DATE	BY	APP'D
		N		REVISED PER ECO-07-004106	2/22/07	SS	DC
		N1		REVISED PER ECO-09-021510	05SEP09	KK	AEG

- △ ACCEPTS .062±.007 PRINTED CIRCUITS BOARD.
- 2. MAX ALLOWABLE BOW TO BE .003 PER INCH OF HOUSING.
- 3. 1-380914-0 AND 1-380914-2 IS ALLOWED TO USE ITEM 7 AND 8 AS SUBSTITUTES FOR ITEM 5 AND 6.
- △ OBSOLETE PARTS: OBSOLETE CIS STREAMLINING PER D.RENAUD/D.SINISI



QTY	ITEM NO.	DESCRIPTION	ITEM NO.
1	1	POLYCARBONATE, GRAY	1
1	2	CONTACT	2
1	3	CONTACT	3
1	4	CONTACT	4
1	5	CLAMP ASSY	5
1	6	CLAMP ASSY	6
1	7	CLAMP ASSY	7
1	8	CLAMP ASSY	8

THIS DRAWING IS A CONTROLLED DOCUMENT.

DIMENSIONS: INCHES 	TOLERANCES UNLESS OTHERWISE SPECIFIED: 0 PLC ± .005 1 PLC ± .005 2 PLC ± .005 3 PLC ± .005 4 PLC ± .005 ANGLES ± .020°	DESIGNED BY: S. SCHLEGEL DATE: 2/22/07 CHECKED BY: J. COURS DATE: 2/22/07 DRAWN BY: J. COURS DATE: 2/22/07 PRODUCT SPEC:	Tyco Electronics Corporation Harrisburg, PA 17105-3608 EDGE CONNECTOR ASSY 14 CIRCUIT MULTI-TAP	SIZE: A2 QAGE CODE: 00779 DRAWING NO: C=380914	RESTRICTED TO:
---------------------------	--	--	--	--	----------------

MATERIAL: FINISH: CUSTOMER DRAWING

SCALE: 2:1 SHEET: 1 of 1 REV: N1

380914

A