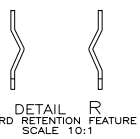
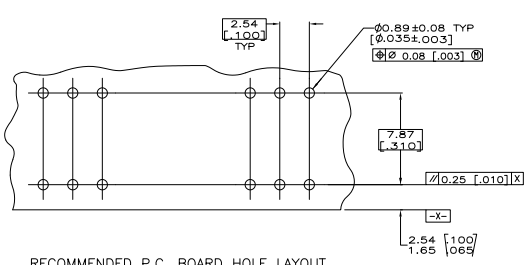
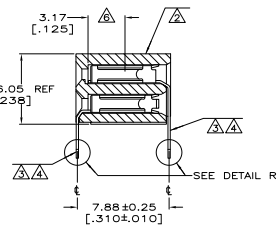
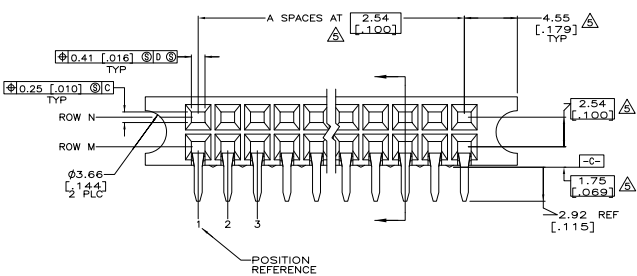
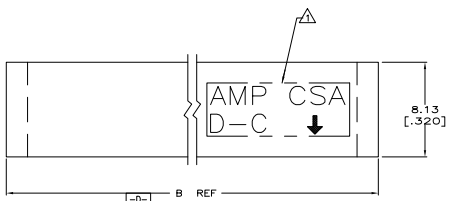


THIS DRAWING IS UNPUBLISHED
 ALL RIGHTS RESERVED
 BY TYS ELECTRONICS CORPORATION

REV	DATE	DESCRIPTION	BY	APP
A1	ECO-06-16025		MB	JG
A2	REVISED PER ECO-09-020689		22MAD09	KK AEG



- △ "AMP", "CSA", "8", AND "DATE CODE" WITH .062 .015 HIGH CHARACTERS WHERE SIZE PERMITS.
- △ HOUSING: 1-70 POSITION SIZES MAY BE PPS, GLASS-FILLED OR PCT, GLASS-FILLED, COLOR: BROWN. POSITION SIZES GREATER THAN 70 WILL BE PPS, GLASS-FILLED, COLOR: BROWN.
- △ CONTACT: PHOSPHOR BRONZE.
- △ CONTACT FINISH: DUPLEX PLATED 0.00076 [0.00030] GOLD IN CONTACT AREA, 0.00127-0.00254 [0.00050-0.00100] BRIGHT TIN-LEAD ON SOLDER TAILS, ALL OVER 0.00127 [0.00050] NICKEL.
- △ THESE DIMENSIONS PERTAIN TO CAVITY ②'S ONLY, NOT TO CONTACT LOCATIONS.
- △ POINT OF MEASUREMENT FOR PLATING THICKNESS (INSIDE CONTACT BEAMS).
- 7. CSA LOGO INK STAMPED WHITE ON HOUSING.
- △ CONTACT FINISH: DUPLEX PLATED 0.00076 [0.00030] GOLD IN CONTACT AREA, 0.00127-0.00254 [0.00050-0.00100] MATTE TIN ON SOLDER TAILS, ALL OVER 0.00127 [0.00050] NICKEL.
- △ ROHS 2002/95/COMPLIANT.
- △ OBSOLETE PARTS: OBSOLETE CIS STREAMLINING PER D.RENAUD/D.SINISI

FINISH	△ 8	5,25	-	1,2,2,3,2,4	1,2,2,3,2,4	70,05 [2.758]	24	50	5-147340-1
	△ 10	5,25	-	1,2,2,3,2,4	1,2,2,3,2,4	70,05 [2.758]	24	50	147340-1
		ROW M	ROW N	ROW M	ROW N		B	A	NO OF POSN PART NUMBER
		POSITION WITH BOARD RETENTION							

THIS DRAWING IS A CONTROLLED DOCUMENT.		DESIGNER	DRW	DATE	REV
INCHES	MILLIMETERS	BY	DATE	BY	DATE
1/16	1.5				
1/8	3.0				
3/16	4.5				
1/4	6.0				
5/16	7.5				
3/8	9.0				
7/16	10.5				
1/2	12.0				
5/8	15.0				
3/4	18.0				
7/8	21.0				
1	24.0				
1 1/8	30.0				
1 1/4	36.0				
1 3/8	42.0				
1 1/2	48.0				
1 5/8	54.0				
1 3/4	60.0				
1 7/8	66.0				
2	72.0				
2 1/8	78.0				
2 1/4	84.0				
2 3/8	90.0				
2 1/2	96.0				
2 5/8	102.0				
2 3/4	108.0				
2 7/8	114.0				
3	120.0				
3 1/8	126.0				
3 1/4	132.0				
3 3/8	138.0				
3 1/2	144.0				
3 5/8	150.0				
3 3/4	156.0				
3 7/8	162.0				
4	168.0				
4 1/8	174.0				
4 1/4	180.0				
4 3/8	186.0				
4 1/2	192.0				
4 5/8	198.0				
4 3/4	204.0				
4 7/8	210.0				
5	216.0				
5 1/8	222.0				
5 1/4	228.0				
5 3/8	234.0				
5 1/2	240.0				
5 5/8	246.0				
5 3/4	252.0				
5 7/8	258.0				
6	264.0				
6 1/8	270.0				
6 1/4	276.0				
6 3/8	282.0				
6 1/2	288.0				
6 5/8	294.0				
6 3/4	300.0				
6 7/8	306.0				
7	312.0				
7 1/8	318.0				
7 1/4	324.0				
7 3/8	330.0				
7 1/2	336.0				
7 5/8	342.0				
7 3/4	348.0				
7 7/8	354.0				
8	360.0				
8 1/8	366.0				
8 1/4	372.0				
8 3/8	378.0				
8 1/2	384.0				
8 5/8	390.0				
8 3/4	396.0				
8 7/8	402.0				
9	408.0				
9 1/8	414.0				
9 1/4	420.0				
9 3/8	426.0				
9 1/2	432.0				
9 5/8	438.0				
9 3/4	444.0				
9 7/8	450.0				
10	456.0				

AMP 480 REV 2/2002