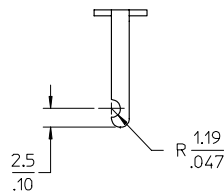
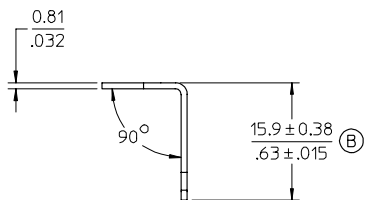


AUX.VIEW  
SCALE:2X



- NOTES:  
 1. MATERIAL: SEE TABLE  
 2. FINISHES: SEE TABLE  
 3. PART IS ROHS COMPLIANT.

1	1	TERMINAL	BRASS	TIN PLATED
ITEM	QTY.	DESCRIPTION	MATERIAL	FINISH

CHANGE DYN/ADD NOTES  
 EC NO: ETC2007-0438  
 DRAWN BY: CLYORK 2007/07/12  
 CHKD: MACNEIL 2007/07/12  
 APPR: MACNEIL 2007/07/12

QUALITY SYMBOLS	DESCRIPTION
▽-0	
▽-0	

GENERAL TOLERANCES (UNLESS SPECIFIED)	
	mm INCH
4 PLACES	± .005 ± .0005
3 PLACES	± .005 ± .0005
2 PLACES	± 0.13 ± .01
1 PLACE	± 0.3 ± .01
ANGULAR ±1/2°	
DRAFT WHERE APPLICABLE MUST REMAIN WITHIN DIMENSIONS	

SCALE 2:1	DESIGN UNITS INCH
DIMENSION STYLE MM/IN	
DRAWN BY R.STONE	DATE 08-18-03
CHECKED BY RK	DATE 2-5-04
APPROVED BY GHR	DATE 2-26-04

THIRD ANGLE PROJECTION	REVISE ON CAD ONLY
TITLE TERMINAL, SOLDER, Y SHORT, CAT. # 143	
MOLEX INCORPORATED	
MATERIAL NO. 380020159	DOCUMENT NO. SD-38002-005
SHEET NO. 1 OF 1	
THIS DRAWING CONTAINS INFORMATION THAT IS PROPRIETARY TO MOLEX INCORPORATED AND SHOULD NOT BE USED WITHOUT WRITTEN PERMISSION	