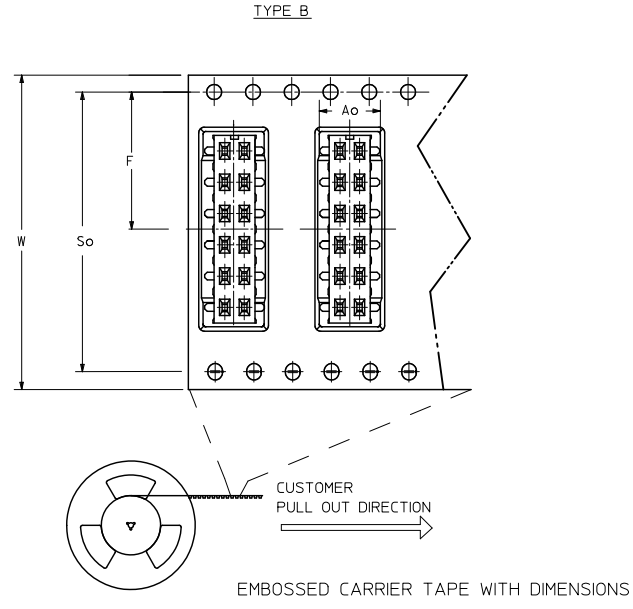
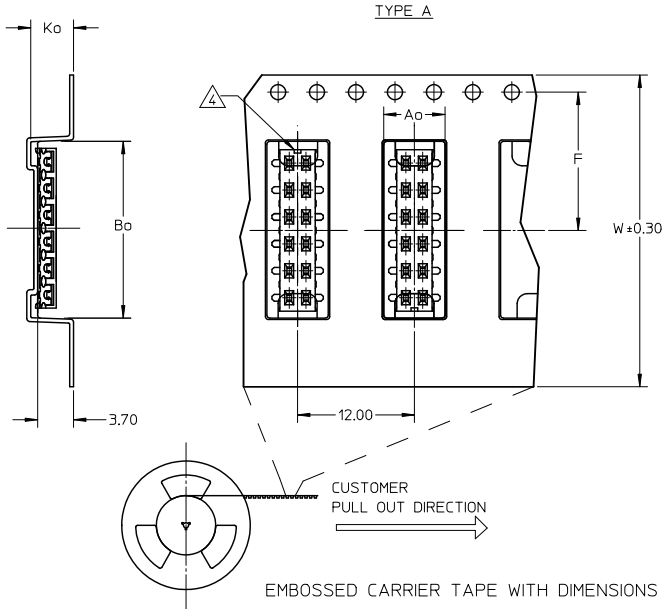


PART NO. IN TUBE	CKT. SIZE	DIM. B	DIM. A
87340-04**	4	2.00	4.00
87340-06**	6	4.00	6.00
87340-08**	8	6.00	8.00
87340-10**	10	8.00	10.00
87340-12**	12	10.00	12.00
87340-14**	14	12.00	14.00
87340-16**	16	14.00	16.00
87340-18**	18	16.00	18.00
87340-20**	20	18.00	20.00

QUALITY SYMBOLS	GENERAL TOLERANCES (UNLESS SPECIFIED)		DIMENSION STYLE		SCALE	DESIGN UNITS	THIRD ANGLE PROJECTION
	mm	INCH	MM ONLY	DATE			
▽=0	4 PLACES ±	---	---	JKACHL I	1991/07/02	TITLE	MGRID
▽=0	3 PLACES ±	---	---	CHECKED BY	DATE		VLPR II, 2MM DUAL ROW
▽=0	2 PLACES ±	0.20	---	JNG	1991/07/09		TOP ENTRY RECEPT., SMT
▽=0	1 PLACE ±	---	---	APPROVED BY	DATE		MOLEX INCORPORATED
	ANGULAR ±		3°	MLONG	2009/11/24		
	DRAFT WHERE APPLICABLE		MUST REMAIN	MATERIAL NO.	SEE TABLE	DOCUMENT NO.	SD-87340-**-01
	WITHIN DIMENSIONS			SIZE	A3	SHEET NO.	1 OF 3

10 9 8 7 6 5 4 3 2 1



- NOTES:
- LEADER AND TRAILER TAPE
 - PEELING OFF FORCE OF THE TOP TAPE: 20-80gf.
 (PEELING DIRECTION AS SHOWN IN FOLLOWING FIGURE)
 - PACKAGING STANDARD IS AS PER EIA-481.
 - NO FIX ORIENTATION OF ASSEMBLY PART IN T&R.
 - TAPE & REEL QUANTITY : TBA

ADD T&R OPTION EIC NO: S2010-0879 DRWNSKANG 2010/04/27 CHYKATSEE 2010/04/26 APPR:MLONG 2010/04/27 L4	DESCRIPTION REV	QUALITY SYMBOLS	GENERAL TOLERANCES (UNLESS SPECIFIED)	DIMENSION STYLE MM ONLY	SCALE NTS	DESIGN UNITS METRIC	THIRD ANGLE PROJECTION																															
		$\nabla=0$ $\nabla=0$ $\nabla=0$	<table border="1"> <tr><th></th><th>mm</th><th>INCH</th></tr> <tr><td>4 PLACES</td><td>± ---</td><td>± ---</td></tr> <tr><td>3 PLACES</td><td>± ---</td><td>± ---</td></tr> <tr><td>2 PLACES</td><td>± 0.20</td><td>± ---</td></tr> <tr><td>1 PLACE</td><td>± ---</td><td>± ---</td></tr> <tr><td colspan="3">ANGULAR ± 3°</td></tr> </table>		mm	INCH	4 PLACES	± ---	± ---	3 PLACES	± ---	± ---	2 PLACES	± 0.20	± ---	1 PLACE	± ---	± ---	ANGULAR ± 3°			<table border="1"> <tr><td>DRAWN BY</td><td>DATE</td></tr> <tr><td>JKACHL I</td><td>1991/07/02</td></tr> <tr><td>CHECKED BY</td><td>DATE</td></tr> <tr><td>JNG</td><td>1991/07/09</td></tr> <tr><td>APPROVED BY</td><td>DATE</td></tr> <tr><td>MLONG</td><td>2009/11/24</td></tr> </table>	DRAWN BY	DATE	JKACHL I	1991/07/02	CHECKED BY	DATE	JNG	1991/07/09	APPROVED BY	DATE	MLONG	2009/11/24	TITLE	MGRID VLPR II, 2MM DUAL ROW TOP ENTRY RECEPT., SMT		
			mm	INCH																																		
		4 PLACES	± ---	± ---																																		
3 PLACES	± ---	± ---																																				
2 PLACES	± 0.20	± ---																																				
1 PLACE	± ---	± ---																																				
ANGULAR ± 3°																																						
DRAWN BY	DATE																																					
JKACHL I	1991/07/02																																					
CHECKED BY	DATE																																					
JNG	1991/07/09																																					
APPROVED BY	DATE																																					
MLONG	2009/11/24																																					
DRAFT WHERE APPLICABLE MUST REMAIN WITHIN DIMENSIONS				MATERIAL NO. SEE TABLE	DOCUMENT NO. SD-87340-**01	SHEET NO. 2 OF 3																																

