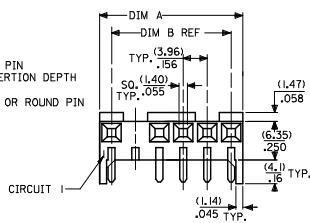
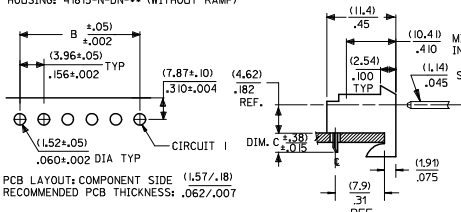
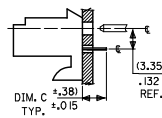
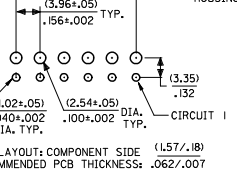


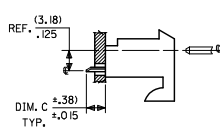
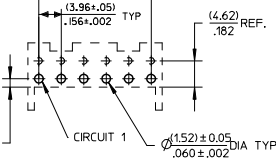
ASSEMBLY PROCEDURE A
HOUSING: 41815-N-AN-** (WITH RAMP)
HOUSING: 41815-N-DN-** (WITHOUT RAMP)



ASSEMBLY PROCEDURE B
HOUSING: 41815-N-AN-** (WITH RAMP)
HOUSING: 41815-N-DN-** (WITHOUT RAMP)



ASSEMBLY PROCEDURE C
HOUSING: 41815-N-AN-** (WITH RAMP)
HOUSING: 41815-N-DN-** (WITHOUT RAMP)



DIM. B	DIM. A	NO. OF CKTS
(3.96)	(7.82±.25)	2
.156	.308±0.0	2
(7.92)	(11.75±.25)	3
.312	.464±0.0	3
(11.89)	(15.75±.25)	4
.468	.620±0.0	4
(15.85)	(19.75±.25)	5
.624	.776±0.0	5
(19.81)	(23.67±.25)	6
.780	.932±0.0	6
(23.77)	(27.64±.30)	7
.936	1.088±0.0	7
(27.74)	(31.60±.25)	8
1.092	1.244±0.0	8
(31.70)	(35.56±.30)	9
1.248	1.400±0.0	9
(35.66)	(39.52±.30)	10
1.404	1.556±0.0	10
(39.62)	(43.48±.30)	11
1.560	1.712±0.0	11
(43.59)	(47.45±.30)	12
1.716	1.868±0.0	12
(47.55)	(51.41±.30)	13
1.872	2.024±0.0	13
(51.51)	(55.37±.36)	14
2.028	2.180±0.0	14
(55.47)	(59.33±.36)	15
2.184	2.336±0.0	15

NOTES:

- MATERIAL: HOUSING: POLYESTER, 94V-0 COLOR: NATURAL (WHITE)
- FINISH:
 - (102) OVERALL TIN: 0.00508/0.00200 MIN OVER 0.00254/0.00100 MIN COPPER.
 - (208) SELECT GOLD: 0.00038/0.00015 MIN.
 - SELECT TIN: 0.00254/0.00100 MIN.
 - OVERALL NICKEL UNDERPLATE: 0.00127/0.00050 MIN.
 - (228) SELECT GOLD: 0.00076/0.00030 MIN.
 - SELECT TIN: 0.00254/0.00100 MIN.
 - OVERALL NICKEL UNDERPLATE: 0.00127/0.00050 MIN.
 - (505) OVERALL GOLD: 0.00127/0.00050 MIN OVER 0.00127/0.00050 MIN NICKEL.
 - (909) OVERALL TIN: 0.00254/0.00100 MIN.
- THE PRIMARY SHIPPING CARTON WILL BE LABELED "COMPLIANT TO RoHS DIRECTIVE 2002/95/EC AND ELV ANNEX II OF DIRECTIVE 2002/53/EC; CARTONS WITHOUT THIS LABEL MAY CONTAIN PRODUCT WITH TIN-LEAD PLATING.
- PRODUCT SPECIFICATION: PS-08-50
- PACKAGING: SEE CHARTS
- FOR TOP ENTRY AND RIGHT ANGLE ASSEMBLIES WITH LOWER INSERTION FORCE USE SINGLE BEAM CONTACT. (TERMINAL NO. 4244)
- SOLDERABILITY: WHEN PARTS ARE SOLDERED AT A TEMPERATURE OF 230°C OR 446°F FOR 5 SECONDS EACH SOLDERED SURFACE SHALL BE A MINIMUM OF 95% COVERED WITH A SMOOTH CONTINUOUS ADHERENT COATING. FOR ADDITIONAL INFORMATION SEE ES-152.
- PARTS ARE STACKABLE END TO END ON (3.96)/.156 ±
- THIS PART CONFORMS TO CLASS B REQUIREMENTS OF COSMETIC SPEC PS-45499-002.

ADD .31 REF EC NO: WEP200909050850 DRW: WKS/SAMIEC 2009/01/27 CHKD: JCOMERCI 2009/01/27 APPR: JCOMERCI 2009/01/27 AM REV	QUALITY SYMBOLS ▽=0 ▽=0	GENERAL TOLERANCES (UNLESS SPECIFIED)	DIMENSION STYLE	SCALE	DESIGN UNITS	THIRD ANGLE PROJECTION	
		mm INCH	MM/IN		INCH		
		4 PLACES ± --- ± ---	DRAWN BY	DATE	TITLE	KK 156 HOUSING PCB 41815 SERIES	
		3 PLACES ± --- ± .10	SAMIEC	01/28/87		MOLEX INCORPORATED	
2 PLACES ± --- ± .015	CHECKED BY	DATE		SDA-41815			
1 PLACE ± --- ± ---	SAMIEC	01/28/87		1 OF 11			
ANGULAR ±1/2°		APPROVED BY	DATE				
DRAFT WHERE APPLICABLE MUST REMAIN WITHIN DIMENSIONS		LENZ	01/28/87				
SEE CHART		MATERIAL NO.	DOCUMENT NO.				
SIZE B		THIS DRAWING CONTAINS INFORMATION THAT IS PROPRIETARY TO MOLEX INCORPORATED AND SHOULD NOT BE USED WITHOUT WRITTEN PERMISSION					



KK 156 PCB ASSY 2-15 CKT 41815 SERIES

Ckts	RIGHT ANGLE		RIGHT ANGLE		BOTTOM ENTRY		BOTTOM ENTRY	
	Material No	Engineer Number	Material No	Engineer Number	Material No	Engineer Number	Material No	Engineer Number
2	09-48-1024	A-41815-0002	09-48-5024	A-41815-0016	09-48-4029	A-41815-0030	09-48-5026	A-41815-0044
3	09-48-1034	A-41815-0003	09-48-5034	A-41815-0017	09-48-4039	A-41815-0031	09-48-5036	A-41815-0045
4	09-48-1044	A-41815-0004	09-48-5044	A-41815-0018	09-48-4049	A-41815-0032	09-48-5046	A-41815-0046
5	09-48-1054	A-41815-0005	09-48-5054	A-41815-0019	09-48-4059	A-41815-0033	09-48-5056	A-41815-0047
6	09-48-1064	A-41815-0006	09-48-5064	A-41815-0020	09-48-4069	A-41815-0034	09-48-5066	A-41815-0048
7	09-48-1074	A-41815-0007	09-48-5074	A-41815-0021	09-48-4079	A-41815-0035	09-48-5076	A-41815-0049
8	09-48-1084	A-41815-0008	09-48-5084	A-41815-0022	09-48-4089	A-41815-0036	09-48-5086	A-41815-0050
9	09-48-1094	A-41815-0009	09-48-5094	A-41815-0023	09-48-4099	A-41815-0037	09-48-5096	A-41815-0051
10	09-48-1104	A-41815-0010	09-48-5104	A-41815-0024	09-48-4109	A-41815-0038	09-48-5106	A-41815-0052
11	09-48-1114	A-41815-0011	09-48-5114	A-41815-0025	09-48-4119	A-41815-0039	09-48-5116	A-41815-0053
12	09-48-1124	A-41815-0012	09-48-5124	A-41815-0026	09-48-4129	A-41815-0040	09-48-5126	A-41815-0054
13	09-48-1134	A-41815-0013	09-48-5134	A-41815-0027	09-48-4139	A-41815-0041	09-48-5136	A-41815-0055
14	09-48-1144	A-41815-0014	09-48-5144	A-41815-0028	09-48-4149	A-41815-0042	09-48-5146	A-41815-0056
15	09-48-1154	A-41815-0015	09-48-5154	A-41815-0029	09-48-4159	A-41815-0043	09-48-5156	A-41815-0057

REV: AL6	<u>ECR/ECN INFORMATION:</u> EC NO. UCP2009-0167 DATE: 10/30/2008	<u>TITLE:</u> <h3 style="text-align: center;">KK 156 HOUSING ASSY PCB 41815 SERIES DWG</h3>	<u>SHEET No.</u> - 2 -
<u>DOCUMENT NUMBER:</u> SDA-41815		<u>CREATED / REVISED BY:</u> MKIPPER	<u>CHECKED BY:</u> JBELL
<u>APPROVED BY:</u> FSMITH			

TEMPLATE FILENAME: PRODUCT_SPEC[SIZE_A](V.1).DOC



KK 156 PCB ASSY 2-15 CKT 41815 SERIES

Assy. Proc:	TOP ENTRY
Housing No:	41815-N-AN
Options	WITH RAMP
Terminal No:	2144-BA-A1AA-102B
Term Matl:	PHOS BRONZE
Plating:	102 – TIN
Dim C:	(3.05) / .120
Voids:	NONE
Hooks Cut:	NO
Packaging:	PK-41815-001 TRAY

Assy. Proc:	TOP ENTRY
Housing No:	41815-N-AN
Options	WITH RAMP
Terminal No:	2144-BA-A1AA-208B
Term Matl:	PHOS BRONZE
Plating:	208 – 15 GOLD
Dim C:	(3.05) / .120
Voids:	NONE
Hooks Cut:	NO
Packaging:	PK-41815-001 TRAY

Ckts	Material No	Engineer Number	Material No	Engineer Number
2	09-48-4028	A-41815-0058	09-48-5025	A-41815-0072
3	09-48-4038	A-41815-0059	09-48-5035	A-41815-0073
4	09-48-4048	A-41815-0060	09-48-5045	A-41815-0074
5	09-48-4058	A-41815-0061	09-48-5055	A-41815-0075
6	09-48-4068	A-41815-0062	09-48-5065	A-41815-0076
7	09-48-4078	A-41815-0063	09-48-5075	A-41815-0077
8	09-48-4088	A-41815-0064	09-48-5085	A-41815-0078
9	09-48-4098	A-41815-0065	09-48-5095	A-41815-0079
10	09-48-4108	A-41815-0066	09-48-5105	A-41815-0080
11	09-48-4118	A-41815-0067	09-48-5115	A-41815-0081
12	09-48-4128	A-41815-0068	09-48-5125	A-41815-0082
13	09-48-4138	A-41815-0069	09-48-5135	A-41815-0083
14	09-48-4148	A-41815-0070	09-48-5145	A-41815-0084
15	09-48-4158	A-41815-0071	09-48-5155	A-41815-0085

REV: AL6	ECR/ECN INFORMATION: EC NO. UCP2009-0167 DATE: 10/30/2008	TITLE: KK 156 HOUSING ASSY PCB 41815 SERIES DWG	SHEET No. - 3 -
DOCUMENT NUMBER: SDA-41815		CREATED / REVISED BY: MKIPPER	CHECKED BY: JBELL
		APPROVED BY: FSMITH	

TEMPLATE FILENAME: PRODUCT_SPEC(SIZE_A)(V.1).DOC



KK 156 PCB ASSY 2-15 CKT 41815 SERIES

Ckts	Assy. Proc: BOTTOM ENTRY		Assy. Proc: TOP ENTRY		Assy. Proc: RIGHT ANGLE		Assy. Proc: BOTTOM ENTRY	
	Material No	Engineer Number	Material No	Engineer Number	Material No	Engineer Number	Material No	Engineer Number
2	09-48-2022	A-41815-0100	09-48-2025	A-41815-0114	41815-0128	A-41815-0128	09-48-4022	A-41815-0142
3	09-48-2032	A-41815-0101	09-48-2035	A-41815-0115	41815-0129	A-41815-0129	09-48-4032	A-41815-0143
4	09-48-2042	A-41815-0102	09-48-2045	A-41815-0116	41815-0130	A-41815-0130	09-48-4042	A-41815-0144
5	09-48-2052	A-41815-0103	09-48-2055	A-41815-0117	41815-0131	A-41815-0131	09-48-4052	A-41815-0145
6	09-48-2062	A-41815-0104	09-48-2065	A-41815-0118	41815-0132	A-41815-0132	09-48-4062	A-41815-0146
7	09-48-2072	A-41815-0105	09-48-2075	A-41815-0119	41815-0133	A-41815-0133	09-48-4072	A-41815-0147
8	09-48-2082	A-41815-0106	09-48-2085	A-41815-0120	41815-0134	A-41815-0134	09-48-4082	A-41815-0148
9	09-48-2092	A-41815-0107	09-48-2095	A-41815-0121	41815-0135	A-41815-0135	09-48-4092	A-41815-0149
10	09-48-2102	A-41815-0108	09-48-2105	A-41815-0122	41815-0136	A-41815-0136	09-48-4102	A-41815-0150
11	09-48-2112	A-41815-0109	09-48-2115	A-41815-0123	41815-0137	A-41815-0137	09-48-4112	A-41815-0151
12	09-48-2122	A-41815-0110	09-48-2125	A-41815-0124	09-48-1122	A-41815-0138	09-48-4122	A-41815-0152
13	09-48-2132	A-41815-0111	09-48-2135	A-41815-0125	41815-0139	A-41815-0139	09-48-4132	A-41815-0153
14	09-48-2142	A-41815-0112	09-48-2145	A-41815-0126	41815-0140	A-41815-0140	09-48-4142	A-41815-0154
15	09-48-2152	A-41815-0113	09-48-2155	A-41815-0127	41815-0141	A-41815-0141	09-48-4152	A-41815-0155

REV: AL6	<table border="1" style="width: 100%; border-collapse: collapse;"> <tr> <th colspan="2">ECR/ECN INFORMATION:</th> </tr> <tr> <td>EC NO.</td> <td>UCP2009-0167</td> </tr> <tr> <td>DATE:</td> <td>10/30/2008</td> </tr> </table>	ECR/ECN INFORMATION:		EC NO.	UCP2009-0167	DATE:	10/30/2008	TITLE: KK 156 HOUSING ASSY PCB 41815 SERIES DWG	SHEET No. - 4 -
ECR/ECN INFORMATION:									
EC NO.	UCP2009-0167								
DATE:	10/30/2008								
DOCUMENT NUMBER: SDA-41815		CREATED / REVISED BY: MKIPPER	CHECKED BY: JBELL	APPROVED BY: FSMITH					

TEMPLATE FILENAME: PRODUCT_SPEC[SIZE_A](V.1).DOC



KK 156 PCB ASSY 2-15 CKT 41815 SERIES

	Assy. Proc:	Assy. Proc:	Assy. Proc:	Assy. Proc:
		BOTTOM ENTRY	BOTTOM ENTRY	BOTTOM ENTRY
	Housing No:	41815-N-AN	41815-N-AN	41815-N-AN
	Options	WITH RAMP	WITH RAMP	WITH RAMP
	Terminal No:	6298-1-102	2188-1-228	2144-AA-A1AA-P909B
	Term Matl:	PHOS BRONZE	BRASS	BRASS
	Plating:	102 – TIN	228 – GOLD	P909 – TIN
	Dim C:	(4.60) / .160	(3.18) / .125	(3.68) / .145
	Voids:	NONE	NONE	NONE
	Hooks Cut:	NO	NO	NO
	Packaging:	PK-41815-001 TRAY	PK-41815-001 TRAY	PK-41815-001 TRAY
Ckts	Material No	Engineer Number	Material No	Engineer Number
2			09-48-4021	A-41815-0170
3			09-48-4031	A-41815-0171
4			09-48-4041	A-41815-0172
5			09-48-4051	A-41815-0173
6			09-48-4061	A-41815-0174
7			09-48-4071	A-41815-0175
8			09-48-4081	A-41815-0176
9			09-48-4091	A-41815-0177
10			09-48-4101	A-41815-0178
11			09-48-4111	A-41815-0179
12			09-48-4121	A-41815-0180
13			09-48-4131	A-41815-0181
14			09-48-4141	A-41815-0182
15			09-48-4151	A-41815-0183
			41815-0184	A-41815-0184
			09-48-5030	A-41815-0185
			09-48-5040	A-41815-0186
			09-48-5050	A-41815-0187
			41815-0188	A-41815-0188
			41815-0189	A-41815-0189
			09-48-5090	A-41815-0190
			41815-0191	A-41815-0191
			09-48-5100	A-41815-0192
			41815-0193	A-41815-0193
			41815-0194	A-41815-0194
			41815-0195	A-41815-0195
			41815-0196	A-41815-0196
			41815-0197	A-41815-0197
			09-48-2021	A-41815-0198
			09-48-2031	A-41815-0199
			09-48-2041	A-41815-0200
			09-48-2051	A-41815-0201
			09-48-2061	A-41815-0202
			09-48-2071	A-41815-0203
			09-48-2081	A-41815-0204
			09-48-2091	A-41815-0205
			09-48-2101	A-41815-0206
			09-48-2111	A-41815-0207
			09-48-2121	A-41815-0208
			09-48-2131	A-41815-0209
			09-48-2141	A-41815-0210
			09-48-2151	A-41815-0211

REV:	AL6	ECR/ECN INFORMATION:	TITLE:	SHEET No.
		EC NO. UCP2009-0167	KK 156 HOUSING ASSY PCB 41815 SERIES DWG	- 5 -
		DATE: 10/30/2008		
DOCUMENT NUMBER:		CREATED / REVISED BY:	CHECKED BY:	APPROVED BY:
SDA-41815		MKIPPER	JBELL	FSMITH
TEMPLATE FILENAME: PRODUCT_SPEC[SIZE_A][V.1].DOC				



KK 156 PCB ASSY 2-15 CKT 41815 SERIES

Assy. Proc:	RIGHT ANGLE	Assy. Proc:	BOTTOM ENTRY	Assy. Proc:	RIGHT ANGLE	Assy. Proc:	TOP ENTRY
Housing No:	41815-N-AN	Housing No:	41815-N-DN	Housing No:	41815-N-AN	Housing No:	41815-N-DN
Options	WITH RAMP	Options	NO RAMPS	Options	WITH RAMP	Options	NO RAMPS
Terminal No:	2144-AA-A1AA-228B	Terminal No:	2188-P909	Terminal No:	2144-AA-A1AA-505B	Terminal No:	2144-AA-A1AA-P909B
Term Matl:	BRASS	Term Matl:	BRASS	Term Matl:	BRASS	Term Matl:	BRASS
Plating:	228 – GOLD	Plating:	P909 – TIN	Plating:	505 – GOLD	Plating:	P909 – TIN
Dim C:	(3.68) / .145	Dim C:	(4.06) / .160	Dim C:	(3.68) / .145	Dim C:	(3.05) / .120
Voids:	NONE	Voids:	NONE	Voids:	NONE	Voids:	NONE
Hooks Cut:	NO	Hooks Cut:	YES	Hooks Cut:	NO	Hooks Cut:	NO
Packaging:	PK-41815-001 TRAY	Packaging:	PK-41815-001 TRAY	Packaging:	PK-41815-001 TRAY	Packaging:	PK-41815-001 TRAY

Ckts	Material No	Engineer Number	Material No	Engineer Number	Material No	Engineer Number	Material No	Engineer Number
2	09-48-5023	A-41815-0313	41815-0327	A-41815-0327	41815-0341	A-41815-0341	41815-0355	A-41815-0355
3	09-48-5033	A-41815-0314	41815-0328	A-41815-0328	09-48-3037	A-41815-0342	41815-0356	A-41815-0356
4	09-48-5043	A-41815-0315	41815-0329	A-41815-0329	41815-0343	A-41815-0343	09-48-2047	A-41815-0357
5	09-48-5053	A-41815-0316	09-48-2056	A-41815-0330	41815-0344	A-41815-0344	41815-0358	A-41815-0358
6	09-48-5063	A-41815-0317	41815-0331	A-41815-0331	41815-0345	A-41815-0345	41815-0359	A-41815-0359
7	09-48-5073	A-41815-0318	41815-0332	A-41815-0332	41815-0346	A-41815-0346	41815-0360	A-41815-0360
8	09-48-5083	A-41815-0319	09-48-2086	A-41815-0333	41815-0347	A-41815-0347	41815-0361	A-41815-0361
9	09-48-5093	A-41815-0320	41815-0334	A-41815-0334	41815-0348	A-41815-0348	41815-0362	A-41815-0362
10	09-48-5103	A-41815-0321	09-48-2106	A-41815-0335	41815-0349	A-41815-0349	09-48-2107	A-41815-0363
11	09-48-5113	A-41815-0322	41815-0336	A-41815-0336	41815-0350	A-41815-0350	41815-0364	A-41815-0364
12	09-48-5123	A-41815-0323	41815-0337	A-41815-0337	41815-0351	A-41815-0351	41815-0365	A-41815-0365
13	09-48-5133	A-41815-0324	41815-0338	A-41815-0338	41815-0352	A-41815-0352	41815-0366	A-41815-0366
14	09-48-5143	A-41815-0325	41815-0339	A-41815-0339	41815-0353	A-41815-0353	41815-0367	A-41815-0367
15	09-48-5153	A-41815-0326	41815-0340	A-41815-0340	41815-0354	A-41815-0354	41815-0368	A-41815-0368

REV:	AL6	ECR/ECN INFORMATION:	TITLE:	KK 156 HOUSING ASSY PCB 41815 SERIES DWG	SHEET No.
		EC NO.			- 6 -
		DATE:			
		10/30/2008			
DOCUMENT NUMBER:	SDA-41815	CREATED / REVISED BY:	MKIPPER	CHECKED BY:	JBELL
		APPROVED BY:	FSMITH		

TEMPLATE FILENAME: PRODUCT_SPEC[SIZE_A](V.1).DOC



KK 156 PCB ASSY 2-15 CKT 41815 SERIES

Ckts	RIGHT ANGLE		BOTTOM ENTRY		RIGHT ANGLE		BOTTOM ENTRY	
	Material No	Engineer Number	Material No	Engineer Number	Material No	Engineer Number	Material No	Engineer Number
2	09-48-1023	A-41815-0369	09-48-4025	A-41815-0383	09-48-3025	A-41815-0425	09-48-3024	A-41815-0439
3	09-48-1033	A-41815-0370	09-48-4035	A-41815-0384	09-48-3035	A-41815-0426	09-48-3034	A-41815-0440
4	09-48-1043	A-41815-0371	09-48-4045	A-41815-0385	09-48-3045	A-41815-0427	09-48-3044	A-41815-0441
5	09-48-1053	A-41815-0372	09-48-4055	A-41815-0386	09-48-3055	A-41815-0428	09-48-3054	A-41815-0442
6	09-48-1063	A-41815-0373	09-48-4065	A-41815-0387	09-48-3065	A-41815-0429	09-48-3064	A-41815-0443
7	09-48-1073	A-41815-0374	09-48-4075	A-41815-0388	09-48-3075	A-41815-0430	09-48-3074	A-41815-0444
8	09-48-1083	A-41815-0375	09-48-4085	A-41815-0389	09-48-3085	A-41815-0431	09-48-3084	A-41815-0445
9	09-48-1093	A-41815-0376	09-48-4095	A-41815-0390	09-48-3095	A-41815-0432	09-48-3094	A-41815-0446
10	09-48-1103	A-41815-0377	09-48-4105	A-41815-0391	09-48-3105	A-41815-0433	09-48-3104	A-41815-0447
11	09-48-1113	A-41815-0378	09-48-4115	A-41815-0392	09-48-3115	A-41815-0434	09-48-3114	A-41815-0448
12	09-48-1123	A-41815-0379	09-48-4125	A-41815-0393	09-48-3125	A-41815-0435	09-48-3124	A-41815-0449
13	09-48-1133	A-41815-0380	09-48-4135	A-41815-0394	09-48-3135	A-41815-0436	09-48-3134	A-41815-0450
14	09-48-1143	A-41815-0381	09-48-4145	A-41815-0395	09-48-3145	A-41815-0437	09-48-3144	A-41815-0451
15	09-48-1153	A-41815-0382	09-48-4155	A-41815-0396	09-48-3155	A-41815-0438	09-48-3154	A-41815-0452

REV: AL6	<u>ECR/ECN INFORMATION:</u> EC NO. UCP2009-0167 DATE: 10/30/2008	<u>TITLE:</u> <h3 style="text-align: center;">KK 156 HOUSING ASSY PCB 41815 SERIES DWG</h3>	<u>SHEET No.</u> - 7 -
<u>DOCUMENT NUMBER:</u> SDA-41815		<u>CREATED / REVISED BY:</u> MKIPPER	<u>CHECKED BY:</u> JBELL
<u>APPROVED BY:</u> FSMITH			

TEMPLATE FILENAME: PRODUCT_SPEC[SIZE_A](V.1).DOC



KK 156 PCB ASSY 2-15 CKT 41815 SERIES

	Assy. Proc:	TOP ENTRY	Assy. Proc:	TOP ENTRY	Assy. Proc:	RIGHT ANGLE	Assy. Proc:	BOTTOM ENTRY
	Housing No:	41815-N-AN	Housing No:	41815-N-AN	Housing No:	41815-N-AN	Housing No:	41815-N-AN
	Options	WITH RAMP	Options	WITH RAMP	Options	WITH RAMP	Options	WITH RAMP
	Terminal No:	2144-AA-A1AA-P909B	Terminal No:	2144-AA-A1AA-208B	Terminal No:	2144-BA-A1AA-P909B	Terminal No:	6298-1-P909
	Term Matl:	BRASS	Term Matl:	BRASS	Term Matl:	PHOS BRONZE	Term Matl:	PHOS BRONZE
	Plating:	P909 – TIN	Plating:	208 – 15 GOLD	Plating:	P909 – TIN	Plating:	P909 – TIN
	Dim C:	(3.05) / .120	Dim C:	(3.05) / .120	Dim C:	(3.68) / .145	Dim C:	(3.18) / .125
	Voids:	NONE	Voids:	NONE	Voids:	NONE	Voids:	NONE
	Hooks Cut:	NO	Hooks Cut:	NO	Hooks Cut:	NO	Hooks Cut:	NO
	Packaging:	PK-41815-001 TRAY	Packaging:	PK-41815-001 TRAY	Packaging:	PK-41815-001 TRAY	Packaging:	PK-41815-001 TRAY
Ckts	Material No	Engineer Number	Material No	Engineer Number	Material No	Engineer Number	Material No	Engineer Number
2	09-48-2023	A-41815-0453	09-48-3026	A-41815-0467	09-48-2020	A-41815-0481	09-48-2029	A-41815-0495
3	09-48-2033	A-41815-0454	09-48-3036	A-41815-0468	09-48-2030	A-41815-0482	09-48-2039	A-41815-0496
4	09-48-2043	A-41815-0455	09-48-3046	A-41815-0469	09-48-2040	A-41815-0483	09-48-2049	A-41815-0497
5	09-48-2053	A-41815-0456	09-48-3056	A-41815-0470	09-48-2050	A-41815-0484	09-48-2059	A-41815-0498
6	09-48-2063	A-41815-0457	09-48-3066	A-41815-0471	09-48-2060	A-41815-0485	09-48-2069	A-41815-0499
7	09-48-2073	A-41815-0458	09-48-3076	A-41815-0472	09-48-2070	A-41815-0486	09-48-2079	A-41815-0500
8	09-48-2083	A-41815-0459	09-48-3086	A-41815-0473	09-48-2080	A-41815-0487	09-48-2089	A-41815-0501
9	09-48-2093	A-41815-0460	09-48-3096	A-41815-0474	09-48-2090	A-41815-0488	09-48-2099	A-41815-0502
10	09-48-2103	A-41815-0461	09-48-3106	A-41815-0475	09-48-2100	A-41815-0489	09-48-2109	A-41815-0503
11	09-48-2113	A-41815-0462	09-48-3116	A-41815-0476	09-48-2110	A-41815-0490	09-48-2119	A-41815-0504
12	09-48-2123	A-41815-0463	09-48-3126	A-41815-0477	09-48-2120	A-41815-0491	09-48-2129	A-41815-0505
13	09-48-2133	A-41815-0464	09-48-3136	A-41815-0478	09-48-2130	A-41815-0492	09-48-2139	A-41815-0506
14	09-48-2143	A-41815-0465	09-48-3146	A-41815-0479	09-48-2140	A-41815-0493	09-48-2149	A-41815-0507
15	09-48-2153	A-41815-0466	09-48-3156	A-41815-0480	09-48-2150	A-41815-0494	09-48-2159	A-41815-0508

REV:	ECR/ECN INFORMATION:	TITLE:	KK 156 HOUSING ASSY PCB 41815 SERIES DWG	SHEET No.
AL6	EC NO. UCP2009-0167			- 8 -
	DATE: 10/30/2008			
DOCUMENT NUMBER:	CREATED / REVISED BY:	CHECKED BY:	APPROVED BY:	
SDA-41815	MKIPPER	JBELL	FSMITH	
TEMPLATE FILENAME: PRODUCT_SPEC[SIZE_A](V.1).DOC				



KK 156 PCB ASSY 2-15 CKT 41815 SERIES

Ckts	Assy. Proc: TOP ENTRY		Assy. Proc: TOP ENTRY		Assy. Proc: TOP ENTRY		Assy. Proc: BOTTOM ENTRY	
	Material No	Engineer Number	Material No	Engineer Number	Material No	Engineer Number	Material No	Engineer Number
2	09-48-2028	A-41815-0509	09-48-5028	A-41815-0523	09-48-1025	A-41815-0537		
3	09-48-2038	A-41815-0510	09-48-5038	A-41815-0524	09-48-1035	A-41815-0538	41815-0551	41815-0551
4	09-48-2048	A-41815-0511	09-48-5048	A-41815-0525	09-48-1045	A-41815-0539	41815-0552	41815-0552
5	09-48-2058	A-41815-0512	09-48-5058	A-41815-0526	09-48-1055	A-41815-0540	41815-0553	41815-0553
6	09-48-2068	A-41815-0513	09-48-5068	A-41815-0527	09-48-1065	A-41815-0541	41815-0554	41815-0554
7	09-48-2078	A-41815-0514	09-48-5078	A-41815-0528	09-48-1075	A-41815-0542	41815-0555	41815-0555
8	09-48-2088	A-41815-0515	09-48-5088	A-41815-0529	09-48-1085	A-41815-0543	41815-0556	41815-0556
9	09-48-2098	A-41815-0516	09-48-5098	A-41815-0530	09-48-1095	A-41815-0544	41815-0557	41815-0557
10	09-48-2108	A-41815-0517	09-48-5108	A-41815-0531	09-48-1105	A-41815-0545	41815-0558	41815-0558
11	09-48-2118	A-41815-0518	09-48-5118	A-41815-0532	09-48-1115	A-41815-0546	41815-0559	41815-0559
12	09-48-2128	A-41815-0519	09-48-5128	A-41815-0533	09-48-1125	A-41815-0547	41815-0560	41815-0560
13	09-48-2138	A-41815-0520	09-48-5138	A-41815-0534	09-48-1135	A-41815-0548	41815-0561	41815-0561
14	09-48-2148	A-41815-0521	09-48-5148	A-41815-0535	09-48-1145	A-41815-0549	41815-0562	41815-0562
15	09-48-2158	A-41815-0522	09-48-5158	A-41815-0536	09-48-1155	A-41815-0550	41815-0563	41815-0563

REV:	AL6	ECR/ECN INFORMATION:	EC NO. UCP2009-0167	DATE: 10/30/2008	TITLE:	KK 156 HOUSING ASSY PCB 41815 SERIES DWG	SHEET No.	- 9 -	
DOCUMENT NUMBER:			SDA-41815		CREATED / REVISED BY:		MKIPPER		
CHECKED BY:			JBELL		APPROVED BY:			FSMITH	

TEMPLATE FILENAME: PRODUCT_SPEC(SIZE_A)(V.1).DOC



KK 156 PCB ASSY 2-15 CKT 41815 SERIES

Ckts	Material No	Engineer Number	Material No	Engineer Number	Material No	Engineer Number	Material No	Engineer Number
2	41815-0564	A-41815-0564					41815-0601	A-41815-0601
3	41815-0565	A-41815-0565	41815-0579	A-41815-0579			41815-0602	A-41815-0602
4	41815-0566	A-41815-0566	41815-0580	A-41815-0580				
5	41815-0567	A-41815-0567	41815-0581	A-41815-0581				
6	41815-0568	A-41815-0568	41815-0582	A-41815-0582			41815-0605	A-41815-0605
7	41815-0569	A-41815-0569	41815-0583	A-41815-0583				
8	41815-0570	A-41815-0570	41815-0584	A-41815-0584				
9	41815-0571	A-41815-0571	41815-0585	A-41815-0585				
10	41815-0572	A-41815-0572	41815-0586	A-41815-0586				
11	41815-0573	A-41815-0573	41815-0587	A-41815-0587				
12	41815-0574	A-41815-0574	41815-0588	A-41815-0588				
13	41815-0575	A-41815-0575	41815-0589	A-41815-0589				
14	41815-0576	A-41815-0576	41815-0590	A-41815-0590				
15	41815-0577	A-41815-0577	41815-0591	A-41815-0591	41815-0600	A-41815-0600		

REV:	AL6	ECR/ECN INFORMATION:	EC NO. UCP2009-0167	DATE: 10/30/2008	<u>TITLE:</u>	KK 156 HOUSING ASSY PCB 41815 SERIES DWG	<u>SHEET No.</u>	- 10 -	
<u>DOCUMENT NUMBER:</u>			SDA-41815		<u>CREATED / REVISED BY:</u>		MKIPPER		
<u>CHECKED BY:</u>			JBELL		<u>APPROVED BY:</u>			FSMITH	

TEMPLATE FILENAME: PRODUCT_SPEC[SIZE_A](V.1).DOC



KK 156 PCB ASSY 2-15 CKT 41815 SERIES

Assy. Proc:	RIGHT ANGLE	Assy. Proc:	TOP ENTRY
Housing No:	41815-N-DN	Housing No:	41815-N-DN
Options	WITHOUT RAMP	Options	WITHOUT RAMP
Terminal No:	2144-BA-A1AA-102B	Terminal No:	2144-AA-A1AA-P909B
Term Matl:	PHOS BRONZE	Term Matl:	BRASS
Plating:	102 TIN	Plating:	P909 – TIN
Dim C:	(3.68) / .145	Dim C:	(3.05) / .120
Voids:	NONE	Voids:	NONE
Hooks Cut:	NO	Hooks Cut:	YES
Packaging:	PK-41815-001 TRAY	Packaging:	PK-41815-001 TRAY

Ckts	Material No	Engineer Number	Material No	Engineer Number
2	41815-0630	A-41815-0630		
3	41815-0631	A-41815-0631		
4	41815-0632	A-41815-0632	41815-0646	A-41815-0646
5	41815-0633	A-41815-0633		
6	41815-0634	A-41815-0634		
7	41815-0635	A-41815-0635		
8	41815-0636	A-41815-0636		
9	41815-0637	A-41815-0637		
10	41815-0638	A-41815-0638		
11	41815-0639	A-41815-0639		
12	41815-0640	A-41815-0640		
13	41815-0641	A-41815-0641		
14	41815-0642	A-41815-0642		
15	41815-0643	A-41815-0643		

REV:	AL6	ECR/ECN INFORMATION:	TITLE:	SHEET No.
		EC NO. UCP2009-0167	KK 156 HOUSING ASSY PCB 41815 SERIES DWG	- 11 -
		DATE: 10/30/2008		
DOCUMENT NUMBER:		CREATED / REVISED BY:	CHECKED BY:	APPROVED BY:
SDA-41815		MKIPPER	JBELL	FSMITH

TEMPLATE FILENAME: PRODUCT_SPEC[SIZE_A](V.1).DOC