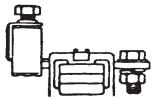


# Cable Lug 32/35 mm DIN-Rail Terminals

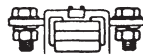
## Feed Through

The Weidmüller SAKG range offers the following connection variations:

- Clamping yoke connection, Version III. The stripped conductor can be connected without further preparation.
- Lug connection, Version II. Two types of screw connection are provided here.
  - a) Screw set with lock nut
  - b) with thread in the busbar
- Clamping yoke/lug connection as a combination, Version I.



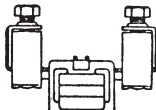
**Version I**



**Version II**  
without thread



**Version II G**  
with thread

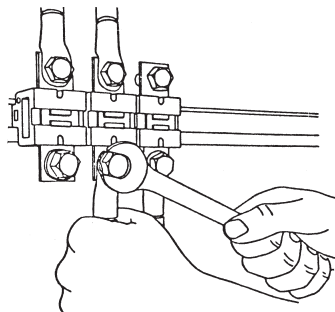


**Version III**

Cables with cable lugs are connected to Version I SAKG terminals and SS stud terminals.

### Fitting instructions for SAKG terminals

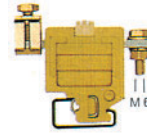
When tightening the clamping screw, it is recommended that the conductor be held against the tightening direction in order to avoid any deformation of the mounting rail and to keep the terminal foot free of torsional forces.



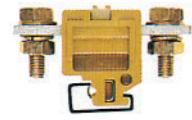
### Cover

In order to ensure shock protection following connection of the conductors, Type AH hoods can be snapped onto the terminal.

## SAKG 28 I



## SAKG 28 II



Available Options	Version	↳	↳
	KrG	<b>0170020000</b>	<b>0170320000</b>
<b>Dimensions</b>			
Width / Length / Height mm (in.) with TS 35 x 7.5	↳	–	–
with TS 32	↳	28/70/63.5 (1.1/2.76/2.5)	28/70/53 (1.1/2.76/2.09)
Insulation stripping length mm (in.)		15 (.59)	–
<b>Technical Data</b>			
Rated voltage / rated current / wire size	UL	600 V / 95 A / #2 AWG	600 V / 115 A / #2 AWG
	CSA	600 V / 110 A / #6...1 AWG	600 V / 135 A / #8...2 AWG
	VDE	1000 VAC / 110 A / 35 mm <sup>2</sup>	1000 VAC / 110 A / 35 mm <sup>2</sup>
Torque Nm (lb. in.)		22.6 (200.0)	22.6 (200.0)
Clamping screw	M	6	6
<b>End Plate, Hard Paper (thickness mm)</b>		<b>Type</b>	<b>Part No.</b>
	For ↳	EP 1 (2)	<b>0205100000</b>
	Tropic-proof	EP 1 (2)	<b>0205200000</b>
	For ↳		
	Tropic-proof		
<b>Partition, Hard Paper (thickness mm)</b>			
	Tropic-proof	TW 1 (2)	<b>0151400000</b>
		TW 1 (2)	<b>0164600000</b>
<b>Jumpers</b>			
	Note: Final number in model indicates no. of poles (e.g. QL 2 = 2 poles). For additional information, see Accessories section.	QL 2	<b>0193900000</b>
		QL 3	<b>0407600000</b>
		QL 4	<b>0407700000</b>
		QL	
<b>Cover</b>			
		AH 28	<b>0326660000</b>
		AH 28	<b>0326660000</b>
<b>Marking Tags</b>			
	Print	DEK 5/5	<b>0473460001</b>
	Consecutive horizontal	DEK 5/5	<b>0473460001</b>
	Consecutive vertical	DEK 5/5	<b>0473560001</b>

See Accessories section for mounting rails, end brackets, test taps, additional marking material and accessories.