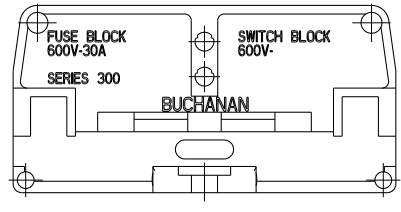
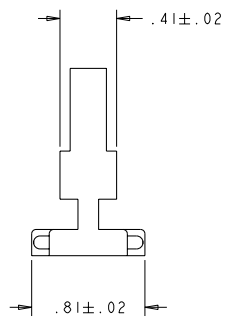
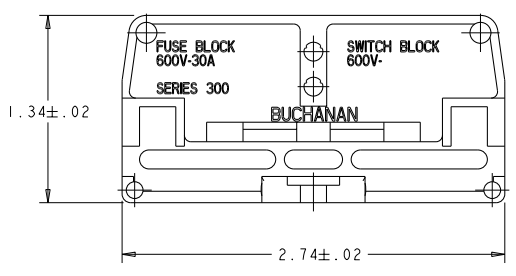
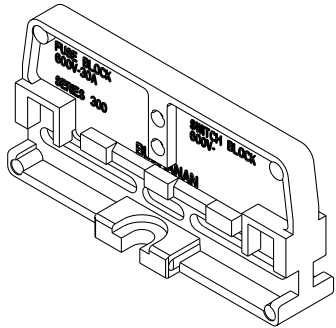
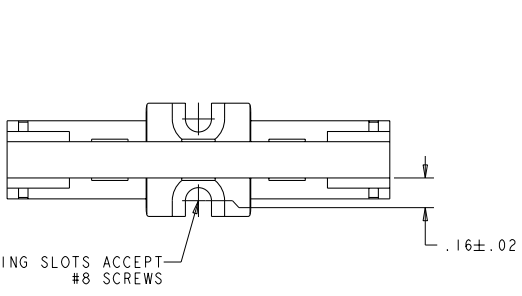


| REV | DATE | BY | APP'D |
|-----|-----------|----|-------|
| A | 18APR2006 | SW | ST |



1. FOR USE WITH 300 SERIES PHENOLIC FUSE AND SWITCH PRODUCT.

| | |
|----------------|-------------|
| 330-BU | 2-1437397-4 |
| CATALOG NUMBER | PART NUMBER |

| | | | | |
|--|--|---|---|--|
| DIMENSIONS: INCHES 0 PLC .01 1 PLC .02 2 PLC .03 3 PLC .04 4 PLC .05 ANGLES .01 MATERIAL - FINISH - | OPERATING SPECIFICATIONS: 0 PLC .01 1 PLC .02 2 PLC .03 3 PLC .04 4 PLC .05 ANGLES .01 WEIGHT - CUSTOMER DRAWING | DWG: S. WELDON 18APR2006 CDR: S. YODER 18APR2006 APP'D: S. YODER 18APR2006 PRODUCT SPEC: APPLICATION SPEC: WEIGHT: CUSTOMER DRAWING | NAME: S. YODER 18APR2006 TITLE: CASE CODE DRAWING NO. RESTRICTED TO: A200779 © 1437397 SCALE: 2:1 SHEET 1 OF 1 REV A | Tyco Electronics Harrisburg, PA 17105-3608 END SECTION, FUSE AND SWITCH BLOCK, FLAT BASE |
|--|--|---|---|--|